



**HIAB**  
**PRODUCT**  
**CATALOGUE**



## WHO WE ARE

THE MAXILIFT AUSTRALIA TEAM HAVE **250+ YEARS COMBINED INDUSTRY KNOWLEDGE**

### WE ARE:

- PASSIONATE ABOUT OUR COMPANY AND WHAT WE DO
- INNOVATIVE IN FINDING SOLUTIONS TO OUR CUSTOMER'S PROBLEMS
- COMMITTED TO BEING THE BEST IN OUR FIELD
- DETERMINED TO LIVE UP TO THE ABOVE

### WE EXCLUSIVELY:

- IMPORT AND STOCK UNIC TELESCOPIC BOOM CRANES
- IMPORT AND STOCK TOMMY GATE HYDRAULIC TAILGATES
- IMPORT AND STOCK EFFER KNUCKLE BOOM CRANES
- IMPORT AND STOCK MAXILIFT MONO-BOOM CRANES
- IMPORT AND STOCK HIAB TRUCK CRANES
- IMPORT AND STOCK MOFFETT TRUCK-MOUNTED FORKLIFTS

### OUR PRODUCTS:

- ARE OF HIGH QUALITY FROM WORLD LEADING MANUFACTURERS
- HAVE SAFETY IN MIND FIRST IN ALL RESPECTS
- ARE MARKET LEADERS IN THEIR SPECIALISED FIELDS
- ARE AVAILABLE IN A LARGE SELECTION OF MODELS AND ACCESSORIES
- ARE EASY TO BUY, EASY TO FIT AND KEEP OUR CUSTOMERS WORKING
- ARE PROFITABLE FOR YOU TO WORK WITH

**LIFT YOUR BUSINESS TO  
THE NEXT LEVEL**



# CONTENTS

---

WHO WE ARE	2
HIAB FEATURES	4-6
X-DUO SERIES	8-11
SPECIFICATIONS, LOAD & WORKING RANGE CHARTS	
HiDUO SERIES	12-19
SPECIFICATIONS, LOAD & WORKING RANGE CHARTS	
iX HiDUO SERIES	20-27
SPECIFICATIONS, LOAD & WORKING RANGE CHARTS	
HIAB HISTORY	28-29
NOTES	30-31



# HIAB FEATURES



SPACEevo

## SPACEevo

SPACEEVO IS THE FUTURE OF LOADER CRANE INTELLIGENCE, NOW BUILT INTO ALL NEW HIDUO AND HIPRO CRANES. SPACEEVO BOOSTS PRODUCTIVITY, SAFETY AND SUSTAINABILITY WITH INTUITIVE CONTROLS, A STATE-OF-THE-ART SENSOR SAFETY SYSTEM AND OPTIMISED ENERGY CONSUMPTION. SPACEEVO IS FUTURE-PROOF THANKS TO ITS CLOUD-BASED OPERATING SYSTEM AND OPEN DESIGN PLATFORM.

## NEXT GENERATION INTELLIGENCE



SAF  
Semi-automatic  
Folding

## SAF

ASSISTED FOLDING AND UNFOLDING OF THE CRANE REDUCES RISK IN THIS CRITICAL OPERATION. SENSORS CONTINUOUSLY MONITOR THE ANGLE AND POSITION OF THE BOOM TO PREVENT ANY MOVEMENT THAT MIGHT DAMAGE THE CRANE.

## SAFETY & CONTROL



NDurance

## NDURANCE™

PROTECTS THE CRANE FROM THE ELEMENTS WITH THE BEST IN SURFACE PROTECTION. TECHNOLOGICALLY ADVANCED AND ENVIRONMENTALLY SOUND, THIS HIGH-TECH PAINTING SYSTEM FIRST SHIELDS THE CRANE'S PARTS WITH AN ULTRA-THIN NANOCERAMIC LAYER THAT PREVENTS CORROSION. AFTERWARDS THEY RECEIVE A LACQUER POLYMER E-COATING AND DURABLE POWDER COATING, CREATING STUNNING GOOD LOOKS THAT WILL LAST THE CRANE'S LIFETIME.

## PROTECTIVE SURFACE COATING



VSL  
Variable  
Stability Logic

## VSL - VARIABLE STABILITY LOGIC

THE VARIABLE STABILITY LOGIC SYSTEM ENSURES THE TRUCK STABILITY WHILST MAXIMIZING THE OUTREACH AND LIFTING CAPACITY OF THE CRANE.

THREE DIFFERENT LEVELS OF OPERATION :

VSL 1 - STABILISERS FULLY EXTENDED

VSL 2 - STABILISERS PARTIALLY EXTENDED, OR FULLY EXTENDED

VSL - STABILISERS EXTENDED TO ANY POSITION

## STABILITY & INCREASED CAPABILITY



XS

## XS DRIVE

WITH THE ERGONOMIC AND EASY-TO-USE HIAB XS DRIVE REMOTE CONTROL, YOU ARE POSITIONED AT THE BEST POSSIBLE LOCATION WHEN OPERATING THE CRANE. YOUR WORK BECOMES MORE EFFICIENT AND MORE COMFORTABLE, NOT TO MENTION EVEN SAFER, SO YOU CAN TRULY MAKE THE MOST OF YOUR EQUIPMENT.

## ERGONOMIC EFFICIENCY



## BDA

BOOM DEPLOY ASSIST WILL PREVENT THE OPERATOR FROM ANY UNWANTED MOVEMENTS WHILST STOWING THE BOOM. THIS FEATURE INCREASES THE SAFETY OF THE CRANE AND MAKES THE OPERATING EXPERIENCE EVEN MORE EFFORTLESS.

## INCREASED SAFETY



# HIAB FEATURES



## OPS

THE OPERATOR PROTECTION SYSTEM IS A SAFETY FEATURE WHICH PREVENTS THE OPERATOR FROM BEING CRUSHED BY THE CRANE. THIS SYSTEM CREATES AN INVISIBLE 'LOCK OUT' ZONE AROUND THE CONTROL STATION, PREVENTING THE OPERATOR FROM SLEWING THE BOOM OVER THEIR HEAD, OR CRUSHING THEMSELVES.

## CRUSH PREVENTION



## HI CONNECT

IT'S EASIER THAN EVER TO GET THE MOST OUT OF YOUR HIAB. HIAB HICONNECT GIVES YOU ACCESS TO REAL-TIME DATA TO IMPROVE PERFORMANCE AND AVOID UNNECESSARY DOWNTIME. HICONNECT IS A REMOTE, FLEET ANALYTIC SERVICE TOOL WHICH GIVES YOU REAL TIME COUNTERS AND SERVICE INFORMATION. YOU STAY IN CONSTANT CONTACT WITH YOUR CRANE – EVERY LIFT, EVERY MOVEMENT, EVERYWHERE.

## UNRIVALED INTELLIGENCE



## WARRANTY

EVERY HIAB CRANE IS BUILT WITH THE STRONGEST MATERIALS, AND A QUALITY OF WORKMANSHIP NO OTHER SUPPLIER CAN MATCH. AND BECAUSE THEY ARE BUILT WITH CARE, WE STAND BEHIND THEM WITH CONFIDENCE.

HIAB CRANES ARE BUILT LIKE NO OTHER, AND THEY COME WITH A PROMISE LIKE NO OTHER: A TWO-YEAR STANDARD WARRANTY ON ALL CRANES, AS WELL AS UP TO FIVE YEAR WARRANTY ON STEEL STRUCTURE. \*\*\*CONDITIONS APPLY\*\*\*

## THE CHOICE OF OPERATORS



## ADC

AUTOMATIC DUTY CONTROL INCREASES THE PERFORMANCE OF THE CRANE DEPENDING ON THE WORKING CONFIGURATION. THE SYSTEM WILL PROVIDE 10% MORE CAPACITY WHEN USING THE CRANE WITHOUT AN ATTACHMENT, THIS INCREASES THE EFFICIENCY AND FURTHER OPTIMIZES YOUR WORKFLOW.

## ERGONOMIC EFFICIENCY



# HIAB FEATURES

**EXTEND THE VERSATILITY OF YOUR HIAB CRANE BY ADDING AN ACCESSORY. MANUFACTURED TO THE HIGHEST STANDARDS, THEY ENHANCE PERFORMANCE AND FUNCTIONALITY. ASK US HOW WE CAN ENHANCE YOUR BUSINESS.**

## BRICK GRABS

HIAB BRICK GRABS ARE HIGHLY VERSATILE AND DESIGNED TO ENDURE HEAVY-DUTY TASKS DAY IN AND DAY OUT. WITH A CAPACITY OF UP TO 3000KG, THEY CAN HANDLE EVEN THE LARGEST AND MOST CHALLENGING LOADS. THIS ATTACHMENT ENHANCES EFFICIENCY AND ENSURES YOU DELIVER THE OPTIMAL SOLUTION EVERY TIME.



## PALLET FORK

A STRAIGHTFORWARD AND DEPENDABLE SOLUTION FOR MANAGING PALLETISED LOADS. THE VARIABLE LOAD CENTRE ATTACHMENT ENSURES THAT THE PALLET REMAINS LEVEL AND STABLE AT ALL TIMES. EASY TO OPERATE AND HIGHLY EFFICIENT, THIS ATTACHMENT STREAMLINES YOUR WORKFLOW.



## BUCKETS

WITH MANY DIFFERENT OPTIONS AVAILABLE, A BUCKET ACCESSORY CAN BE THE PERFECT ADDITION TO YOUR BUSINESS. WHETHER ITS FOR MOVING LARGE VOLUMES OF MATERIAL, OR DIGGING AND TRENCHING, HIAB HAS A SOLUTION TO MEET YOUR REQUIREMENTS.



## GRAPPLES

HIAB TIMBER GRAPPLES ARE BUILT FOR MAXIMUM EFFICIENCY AND TOUGH TASKS, ALL WHILE STAYING LIGHTWEIGHT AND EASY TO MANOEUVRE. FOR OPTIMAL PERFORMANCE, VARIOUS ROTATORS ARE AVAILABLE, CONNECTED VIA A FLANGE ATTACHMENT THAT ENSURES THE MOST SECURE AND DIRECT CONNECTION TO THE GRAPPLE.







**HIAB**

Control panel interface featuring a joystick, buttons, and a small LCD screen. The joystick is labeled 'SPACE X4 RC'. The buttons include a power button, a directional pad, and a 'HIAB' logo button. The LCD screen displays a graphical representation of the crane's arm and various status indicators.

Small LCD screen displaying a graphical representation of the crane's arm and various status indicators. Below the screen are four buttons: a power button, a directional pad, and two circular buttons.

**HIAB X-MP232 E-6**

Reach (m)	3.8	4.9	6.7	8.6	10.6	12.7	14.9	17.2	19.6
ABC kg	5400	3950	2700	2000	1520	1220	1020	870	710
kg	4900	3000	2400	1700	1300	1000	850	700	550





# DUO

THE SMART CHOICE FOR MANUAL CONTROL, WITH A CROSS-CONTROL SETUP THAT PLACES THE SAME LEVER ORIENTATION ON BOTH SIDES OF THE TRUCK. ROBUST AND RELIABLE, THE SPACE X4 INTELLIGENCE SYSTEM FURTHER INCREASES YOUR CRANES PERFORMANCE AND SAFETY.

 **VSL 1**

 **SPACE X4**

 **NDURANCE™**

 **CROSS - CONTROL SETUP**

 **CABIN PROTECTION**

 **DATA RECORDING & LOGGING**

 **OPS**  
**OPERATOR PROTECTION SYSTEM**

 **ADC**  
**AUTOMATIC DUTY CONTROL**







# DUO SERIES



**3.8TM (X-044)**  
LIFTING CAPACITY

**4.7TM (X-058)**  
LIFTING CAPACITY

**nDURANCE**  
SURFACE  
PROTECTION

**CROSS**  
CONTROL SETUP

MODEL <i>BOOM VARIANT</i>	X-044 DUO			X-058 DUO		
	B2	D3	D4	B2	D3	D4
TONNE METER	3.5	3.8	3.7	4.6	4.7	4.4
WEIGHT (KG)	523	563	598	988	1058	1128
SLEW ANGLE (°)	380	380	380	410	410	410
HEIGHT* (MM)	1610	1610	1610	1900	1900	1900
WIDTH* (MM)	1900	1890	1890	2160	2150	2170
LENGTH* (MM)	535	580	600	725	725	725
VSL 1	•	•	•	•	•	•

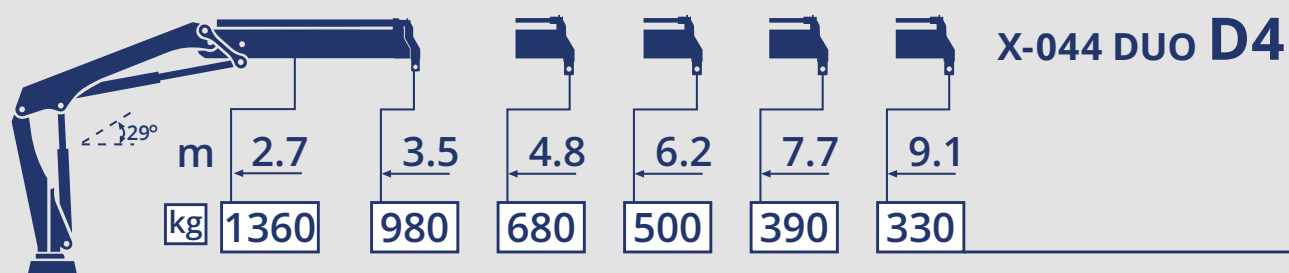
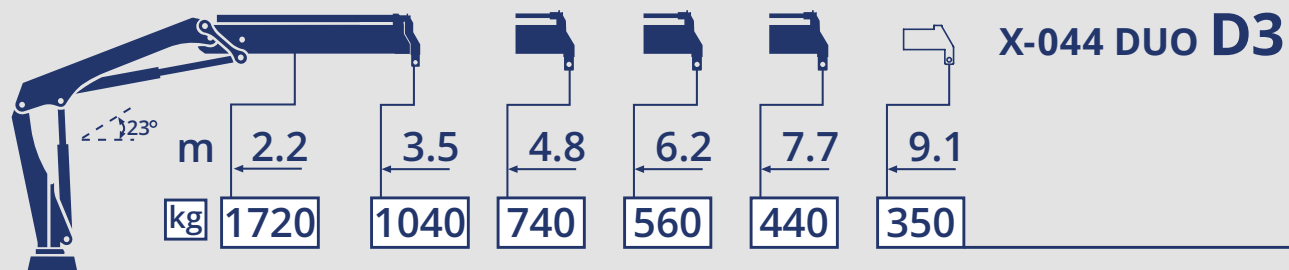
## STANDARD FEATURES



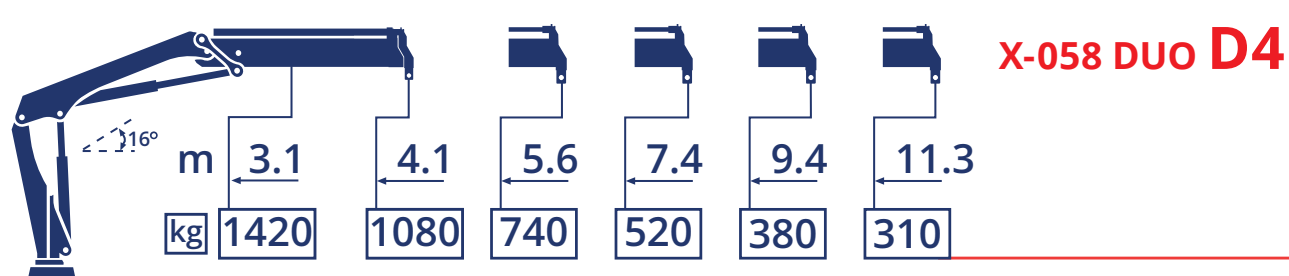
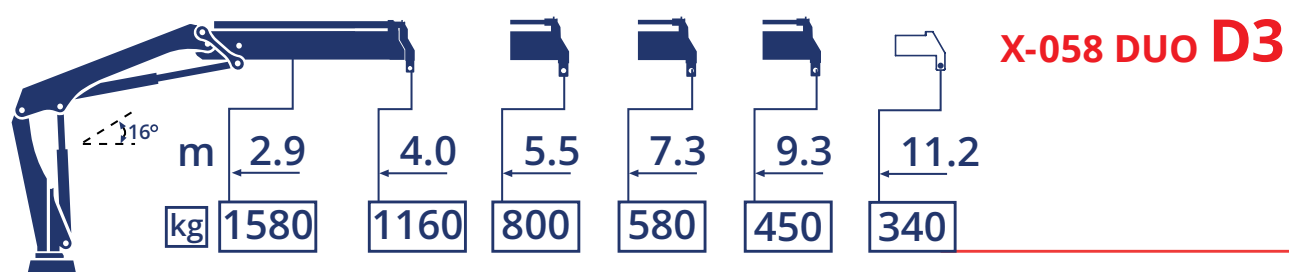
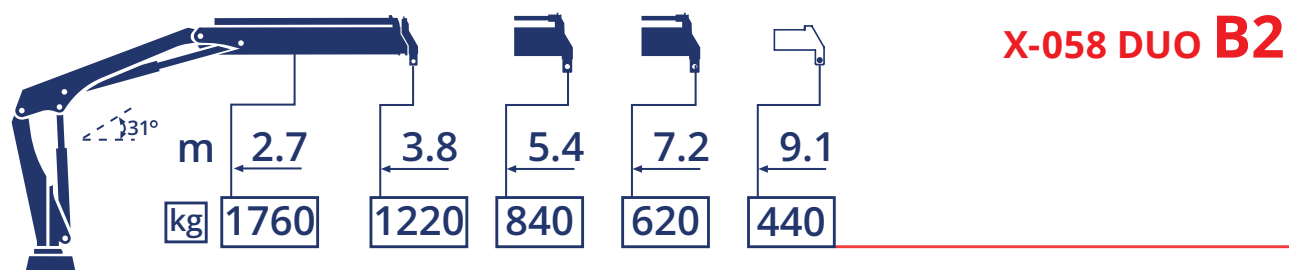
## LEGEND

OPTIONAL	◦
STANDARD	•
NOT INCLUDED	—
APPROXIMATE, ALLOW TOLERANCE FOR ADDITIONAL CLEARANCE	*





MORE BOOM OPTIONS AVAILABLE CONTACT YOUR LOCAL MAXILIFT REPRESENTATIVE





# HIDUO

TRUSTED BY OPERATORS FOR ITS RESPONSIVENESS AND RELIABILITY. THE HIDUO SYSTEM ALLOWS SEVERAL OPERATIONS TO BE COMPLETED SIMULTANEOUSLY. COUPLED WITH THE SPACEEVO CONTROL SYSTEM, THE SAFETY AND OPERATING EXPERIENCE IS ELEVATED EVEN FURTHER.

 VSL

 SPACEevo

 NDURANCE™

 XS DRIVE

 CABIN PROTECTION

 OPS  
OPERATOR PROTECTION SYSTEM







# HIDUO SERIES



**3.8TM (X-046)**  
LIFTING CAPACITY

**5.0TM (X-062)**  
LIFTING CAPACITY

**nDURANCE**  
SURFACE  
PROTECTION

**LOAD**  
HANDLING VALVES

MODEL BOOM VARIANT	X-046 HiDUO			X-062 HiDUO		
	B2	D3	D4	B2	D3	D4
TONNE METER	3.5	3.8	3.7	5.0	5.0	4.8
WEIGHT (KG)	523	563	598	988	1058	1128
SLEW ANGLE (°)	380	380	380	410	410	410
HEIGHT (MM)	1610	1610	1610	1900	1900	1900
WIDTH (MM)	1900	1890	1890	2160	2150	2170
LENGTH (MM)	535	580	600	725	725	725
VSL 1	•	•	•	•	•	•
SAF	o	o	o	o	o	o

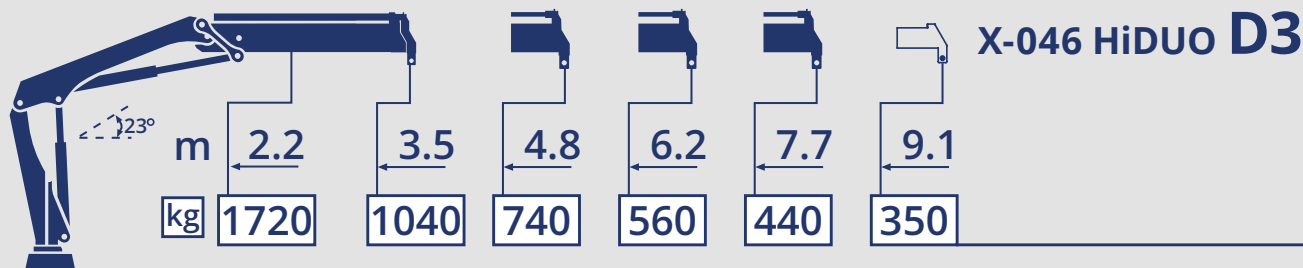
## STANDARD FEATURES



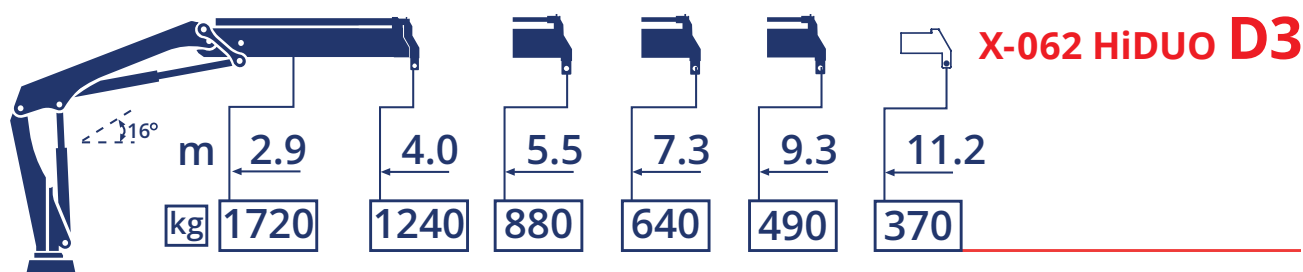
## LEGEND

OPTIONAL	o
STANDARD	•
NOT INCLUDED	—
APPROXIMATE, ALLOW TOLERANCE FOR ADDITIONAL CLEARANCE	*





MORE BOOM OPTIONS AVAILABLE CONTACT YOUR LOCAL MAXILIFT REPRESENTATIVE



# HIDUO SERIES



**6.3TM (X-072)**  
LIFTING CAPACITY

**7.2TM (X-082)**  
LIFTING CAPACITY

**nDURANCE**  
SURFACE  
PROTECTION

**LOAD**  
HANDLING VALVES

MODEL BOOM VARIANT	X-072 HiDUO			X-082 HiDUO		
	B2	D3	D4	B2	D3	D4
TONNE METER	6.3	6.2	5.9	7.2	6.9	6.6
WEIGHT (KG)	1028	1128	1198	1233	1323	1403
SLEW ANGLE (°)	410	410	410	406	406	406
HEIGHT (MM)	1900	1900	1900	1900	1900	1915
WIDTH (MM)	2160	2150	2170	2190	2190	2345
LENGTH (MM)	725	725	725	750	750	750
VSL 1	•	•	•	-	-	-
VSL 2	-	-	-	•	•	•
SAF	o	o	o	o	o	o

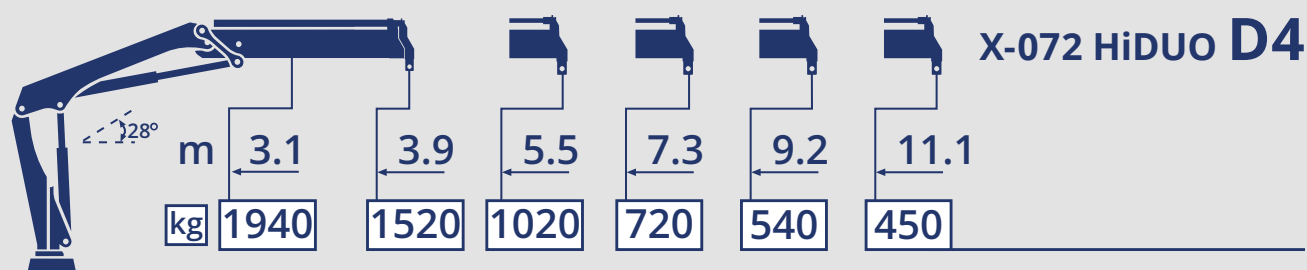
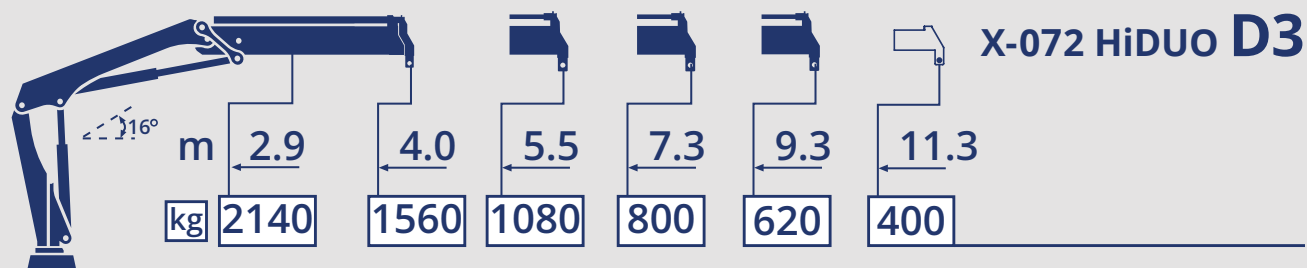
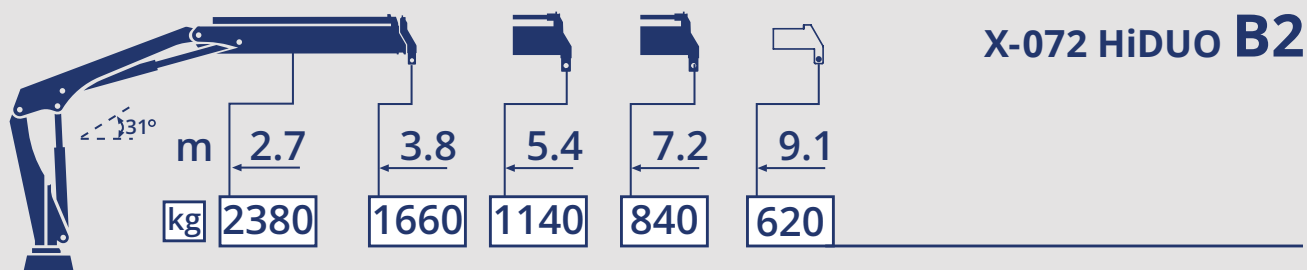
## STANDARD FEATURES



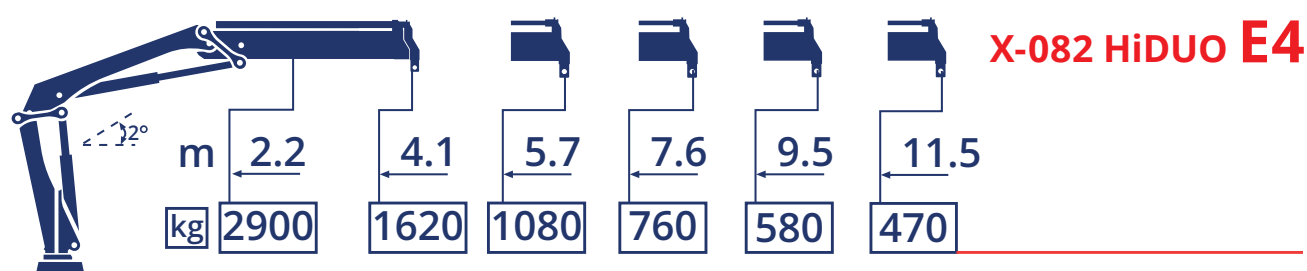
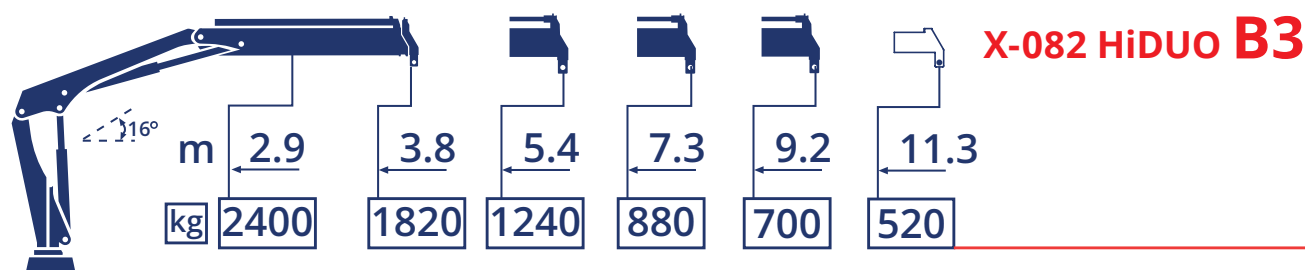
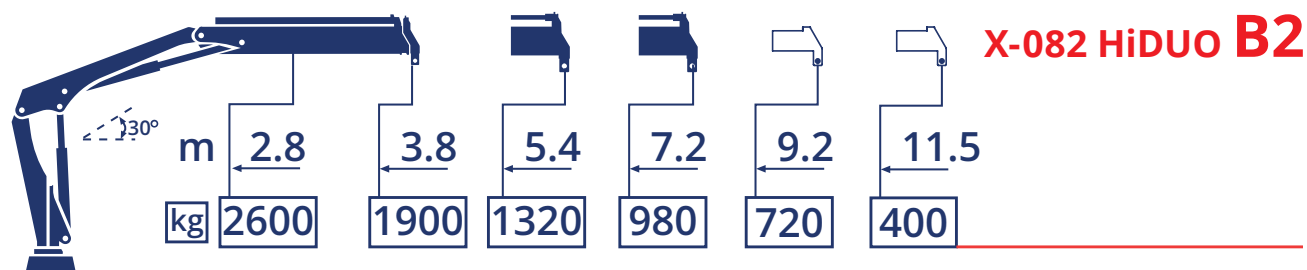
## LEGEND

OPTIONAL	o
STANDARD	•
NOT INCLUDED	-
APPROXIMATE, ALLOW TOLERANCE FOR ADDITIONAL CLEARANCE	*





MORE BOOM OPTIONS AVAILABLE CONTACT YOUR LOCAL MAXILIFT REPRESENTATIVE



# HIDUO SERIES



**9.2TM** (X-108 HiDUO)  
LIFTING CAPACITY

**10.3TM** (X-118 HiDUO)  
LIFTING CAPACITY

**nDURANCE**  
SURFACE  
PROTECTION

**VSL**  
VARIABLE  
STABILITY LOGIC

MODEL	X-108 HiDUO			X-108 HiDUO PLUS			X-118 HiDUO		
BOOM VARIANT	B3	E4	E5	B3	E4	E5	B3	E4	E5
TONNE METER	9.2	9.1	8.7	9.2	9.1	8.7	10.3	10.1	9.9
WEIGHT (KG)	1493	1743	1843	1575	1825	1925	1651	1971	2081
SLEW ANGLE (°)	406	406	406	406	406	406	406	406	406
HEIGHT (MM)	2100	2100	2100	2100	2100	2100	2100	2100	2100
WIDTH (MM)	2280	2300	2400	2280	2300	2400	2295	2392	2486
LENGTH (MM)	770	750	835	770	750	835	785	750	808
VSL	—	—	—	•	•	•	•	•	•
VSL 2	•	•	•	—	—	—	—	—	—
SAF	o	o	o	•	•	•	•	•	•

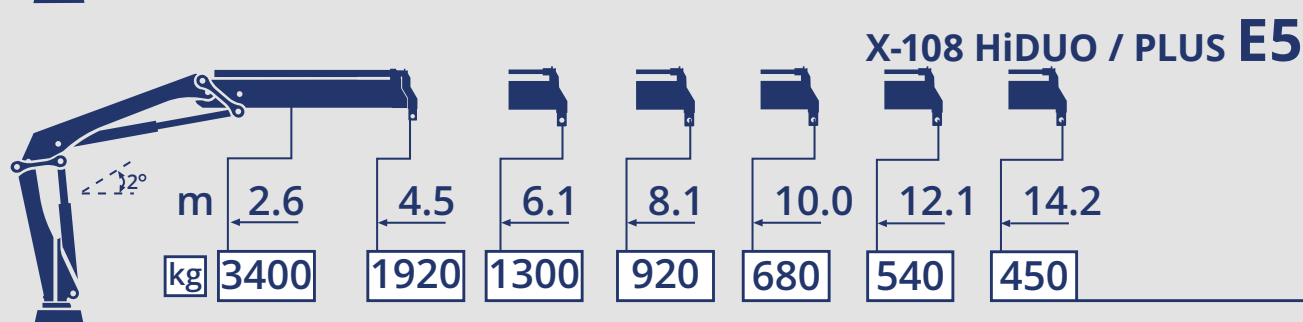
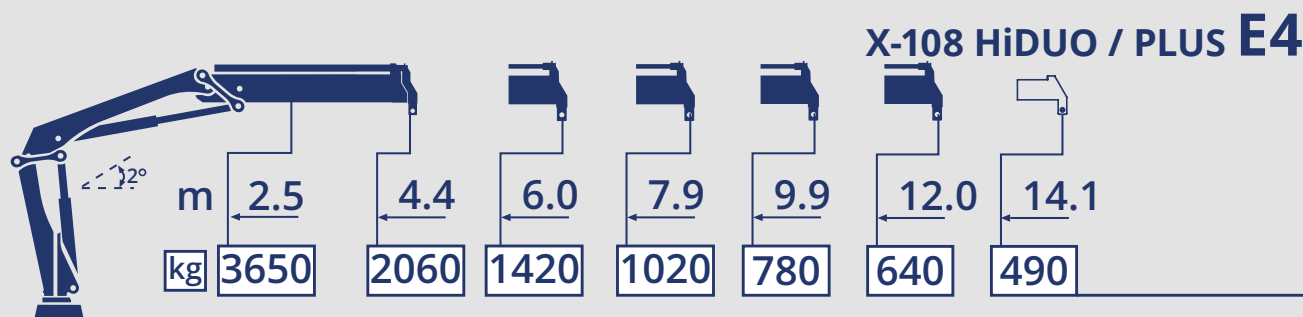
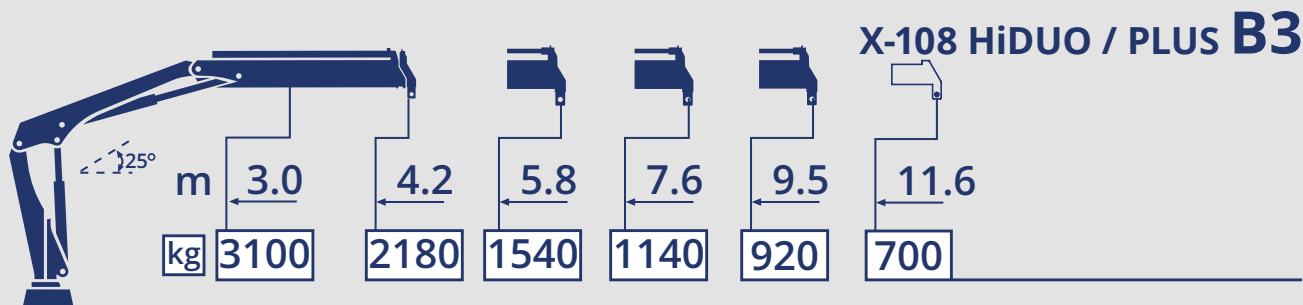
## STANDARD FEATURES



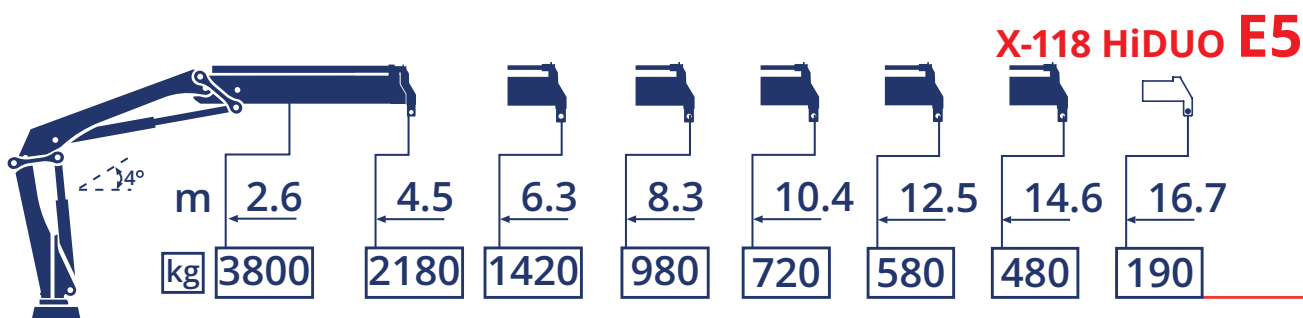
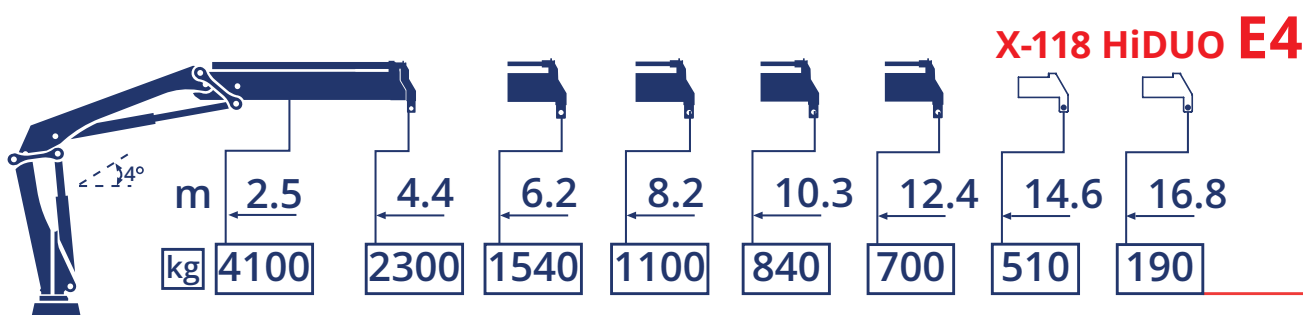
## LEGEND

OPTIONAL	o
STANDARD	•
NOT INCLUDED	—
APPROXIMATE, ALLOW TOLERANCE FOR ADDITIONAL CLEARANCE	*





MORE BOOM OPTIONS AVAILABLE CONTACT YOUR LOCAL MAXILIFT REPRESENTATIVE





# IX HIDUO

THE LATEST INNOVATION FROM HIAB. THIS SYSTEM INCLUDES FULLY OPTIMISED DESIGN TO IMPROVE EFFICIENCY, REDUCE CRANE WEIGHT, REDUCE RUNNING COSTS OF THE TRUCK AND CRANE, INCREASE PERFORMANCE. THE IX HIDUO RANGE IS THE NEW INDUSTRY BENCHMARK WHEN IT COMES TO LOAD CRANE DESIGN AND OPERATION

 **SPACEevo**

 **OPS**  
OPERATOR PROTECTION SYSTEM

 **ADC**  
AUTOMATIC DUTY CONTROL

 **XSDRIVE**

 **NDURANCE™**

 **VSL**

 **CONNECTIVITY**

 **SAF**  
SEMI-AUTOMATIC FOLDING







# IX HIDUO SERIES



**10.0TM** (iX-158 HiDUO)  
LIFTING CAPACITY

**12.6TM** (iX-138)  
LIFTING CAPACITY

**V200**  
HYDRAULIC VALVE

**SPACEevo**  
SMART TECHNOLOGY

MODEL BOOM VARIANT	iX-138 HiDUO			iX-158 HiDUO		
	B3	E4	E5	B3	E4	E5
TONNE METER	12.6	11.8	11.4	15.0	14.0	13.7
WEIGHT (KG)	2162	2432	2542	2222	2452	2572
SLEW ANGLE (°)	415	415	415	415	415	415
HEIGHT (MM)	2264	2286	2286	2264	2286	2286
WIDTH (MM)	2476	2459	2490	2476	2459	2490
LENGTH (MM)	942	825	931	942	825	931
VSL	•	•	•	•	•	•
SAF	•	•	•	•	•	•
BDA	o	o	o	o	o	o

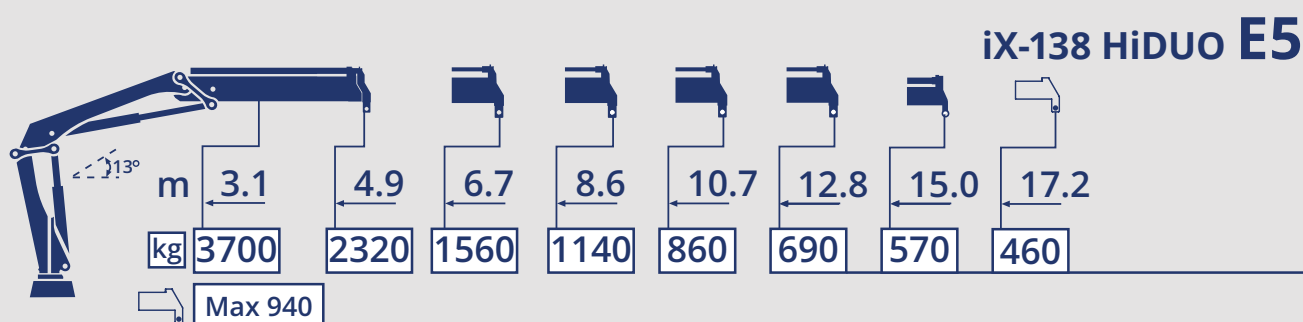
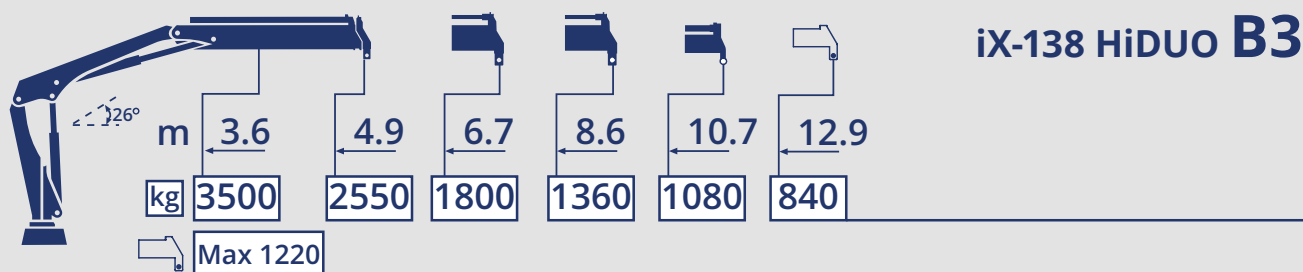
## STANDARD FEATURES



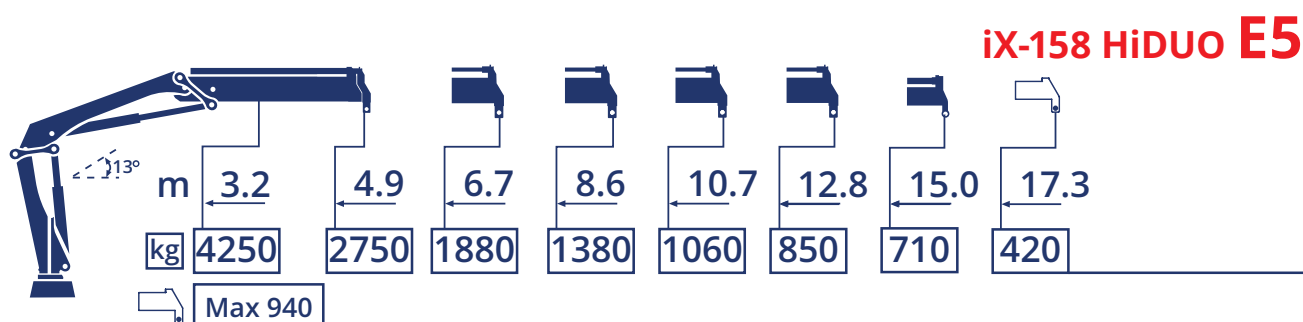
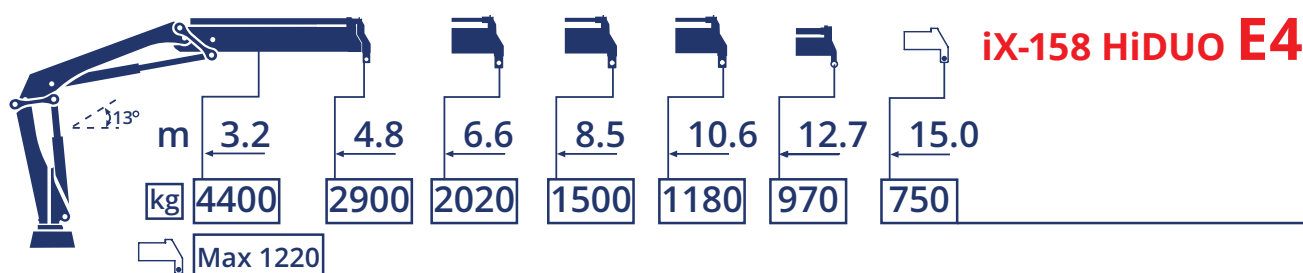
## LEGEND

OPTIONAL	o
STANDARD	•
NOT INCLUDED	—
APPROXIMATE, ALLOW TOLERANCE FOR ADDITIONAL CLEARANCE	*





MORE BOOM OPTIONS AVAILABLE CONTACT YOUR LOCAL MAXILIFT REPRESENTATIVE



# IX HIDUO SERIES



**16.1TM (iX-188)**  
LIFTING CAPACITY

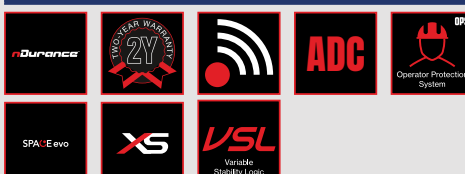
**19.4TM (iX-228)**  
LIFTING CAPACITY

**V200**  
HYDRAULIC VALVE

**SPACEevo**  
SMART TECHNOLOGY

MODEL BOOM VARIANT	iX-188 HiDUO			iX-228 HiDUO		
	E4	E5	E6	E4	E5	E6
TONNE METER	16.1	15.8	15.4	19.4	19.0	18.6
WEIGHT (KG)	2856	2996	3116	2978	3098	3228
SLEW ANGLE (°)	415	415	415	415	415	415
HEIGHT (MM)	2260	2260	2265	2269	2269	2269
WIDTH (MM)	2480	2496	2496	2485	2496	2496
LENGTH (MM)	905	1005	1005	915	1025	1025
VSL	•	•	•	•	•	•
SAF	•	•	•	○	○	○
BDA	○	○	○	•	•	•

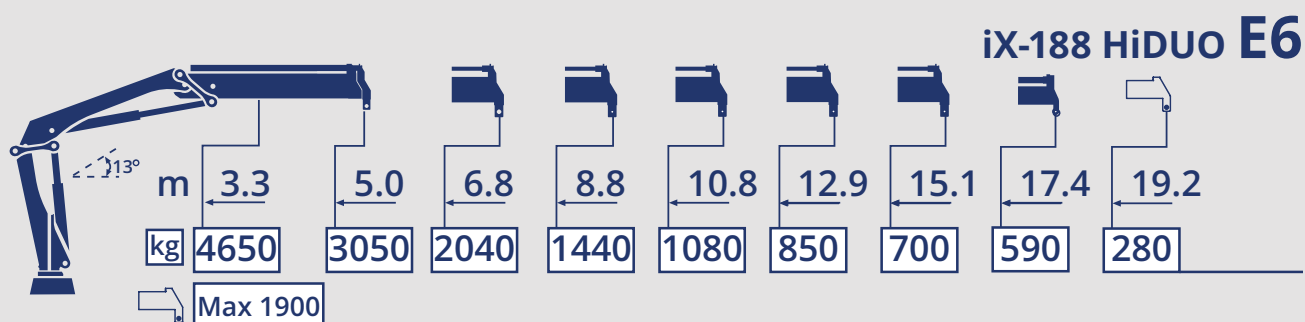
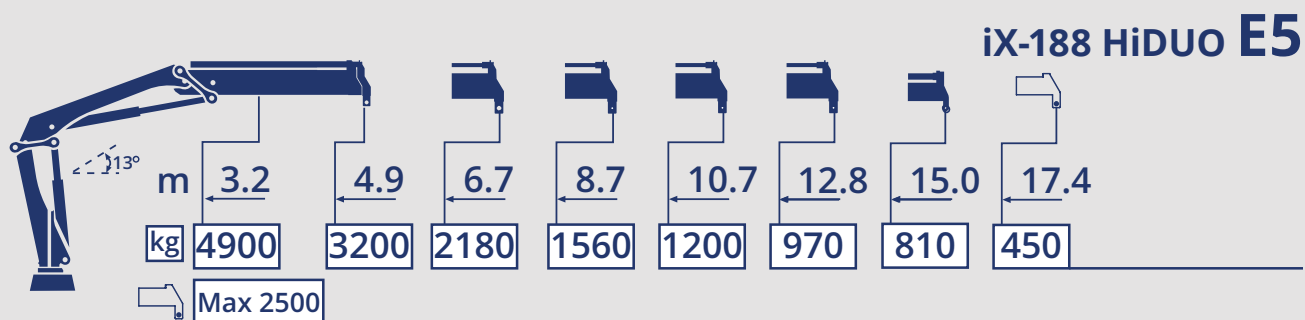
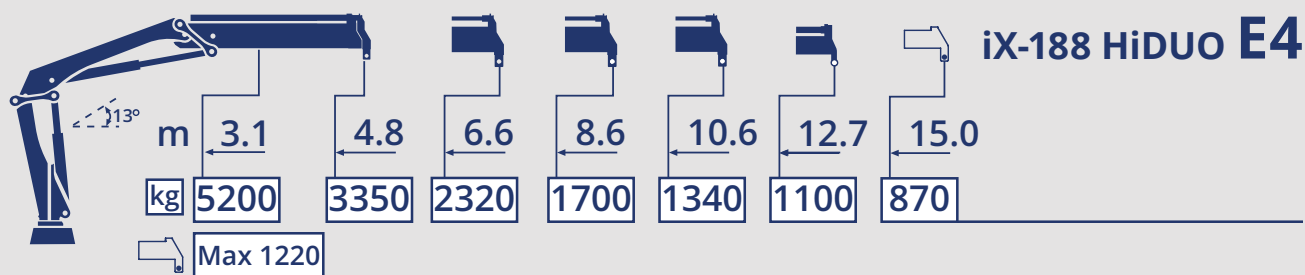
## STANDARD FEATURES



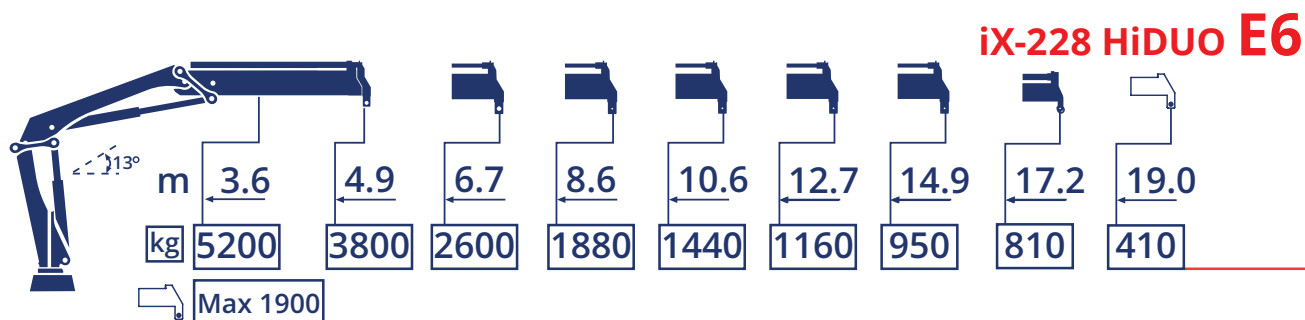
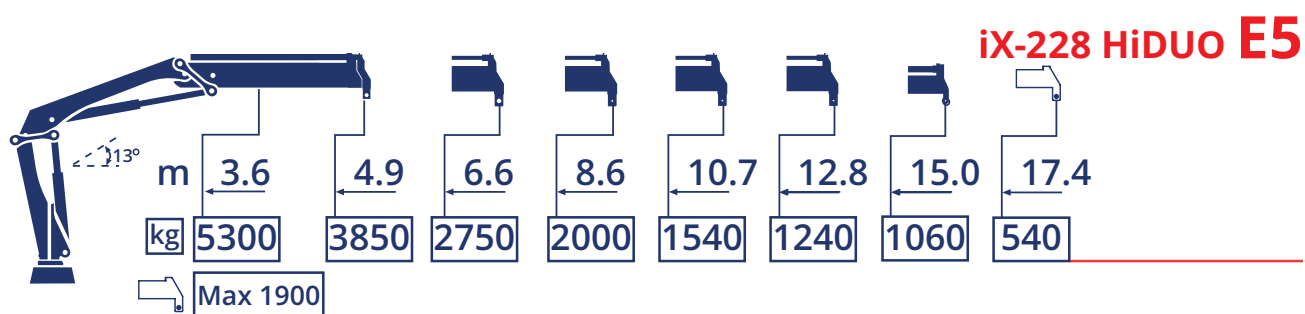
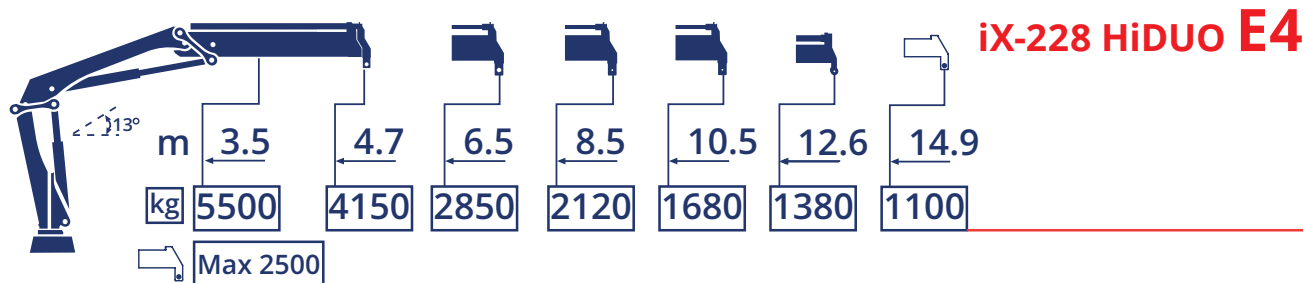
## LEGEND

OPTIONAL	○
STANDARD	•
NOT INCLUDED	—
APPROXIMATE, ALLOW TOLERANCE FOR ADDITIONAL CLEARANCE	*





MORE BOOM OPTIONS AVAILABLE CONTACT YOUR LOCAL MAXILIFT REPRESENTATIVE



# IX HIDUO SERIES



**22.5TM (iX-258)**  
LIFTING CAPACITY

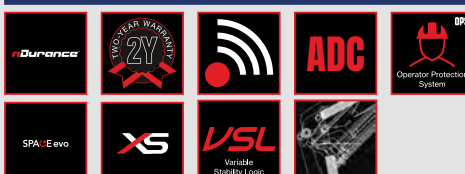
**26.0TM (iX-298)**  
LIFTING CAPACITY

**V200**  
HYDRAULIC VALVE

**SPACEvo**  
SMART TECHNOLOGY

MODEL BOOM VARIANT	iX-258 HiDUO			iX-298 HiDUO		
	EP3	EP4	E8	EP3	EP4	E8
TONNE METER	22.5	21.5	19.7	26.0	25.1	23.3
WEIGHT (KG)	3388	3698	4248	3598	3908	4458
SLEW ANGLE (°)	410	410	410	420	420	420
HEIGHT (MM)	2393	2393	2401	2393	2393	2401
WIDTH (MM)	2500	2500	2500	2500	2500	2500
LENGTH (MM)	1124	1153	1200	1124	1153	1200
VSL	•	•	•	•	•	•
SAF	—	—	—	—	—	—
BDA	•	•	•	•	•	•

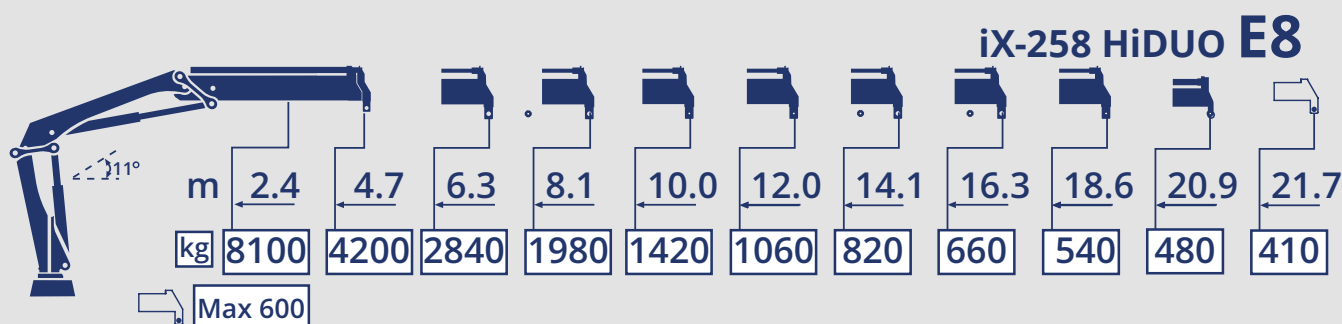
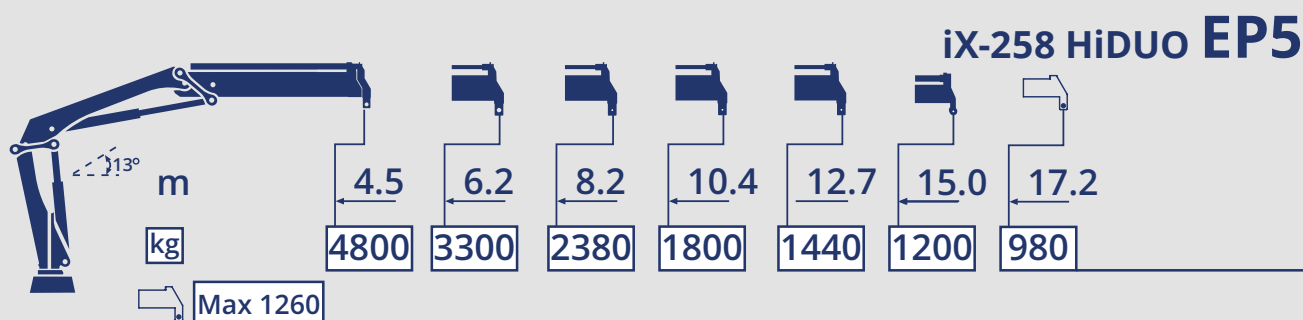
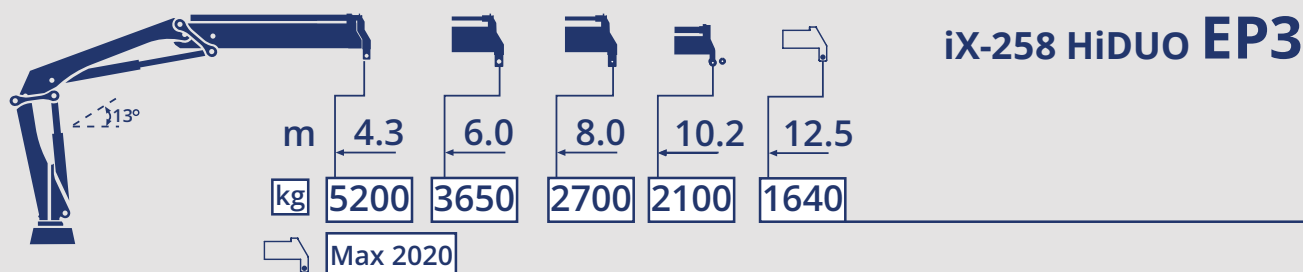
## STANDARD FEATURES



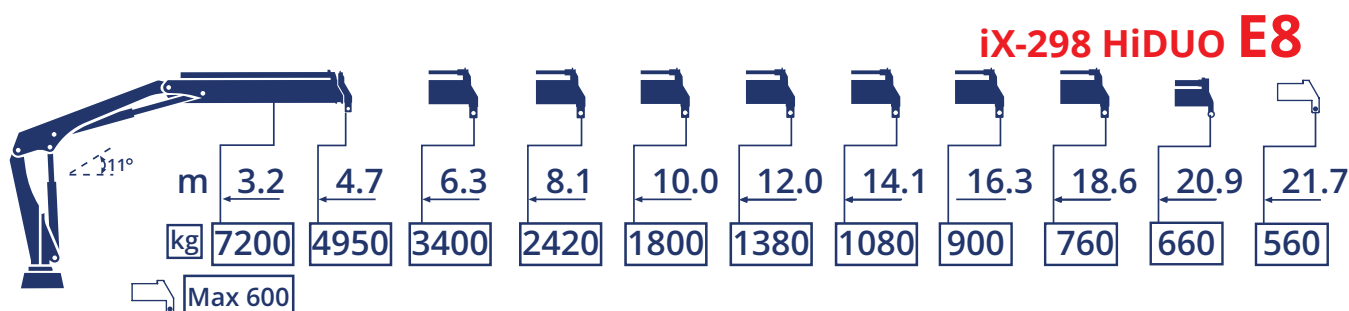
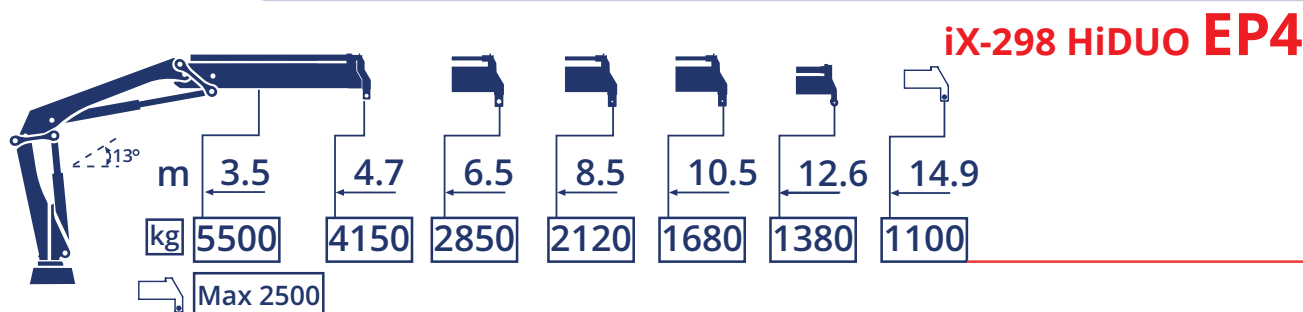
## LEGEND

OPTIONAL	○
STANDARD	•
NOT INCLUDED	—
APPROXIMATE, ALLOW TOLERANCE FOR ADDITIONAL CLEARANCE	*





MORE BOOM OPTIONS AVAILABLE CONTACT YOUR LOCAL MAXILIFT REPRESENTATIVE





**HIAB**

**BUILT TO  
PERFORM**







# HIAB HISTORY

- 1940s** INTRODUCES THE HYDRAULIC CRANE
- 1950s** INTRODUCES THE HYDRAULIC TIMBER GRAPPLE AND ROTATOR
- 1960s** HIGH TENSILE STEEL IN OUR CRANES | PATENT THE KNUCKLE BOOM CRANE
- 1970s** FIRST TO MARKET WITH HEXAGONAL BOOM PROFILES | CROSS CONTROL
- 1980s** TEMPERATURE INDEPENDENT HOSE FAILURE VALVE, PERFORMS IN ALL WEATHER
- 1990s** PATENT AUTOMATIC DAMPENING OF SLEWING [ADS]
- 2000s** LAUNCHES XS-DRIVE AND OWN REMOTE CONTROL
- 2010s** HIVEVISION | CRANE TIP CONTROL | CONNECTIVITY
- 2020s** LAUNCHES IX AND EX RANGE OF CRANES - DESIGNED FOR ELECTRIFICATION

## NOTES:

[illegible]

# LIFT YOUR BUSINESS TO THE NEXT LEVEL

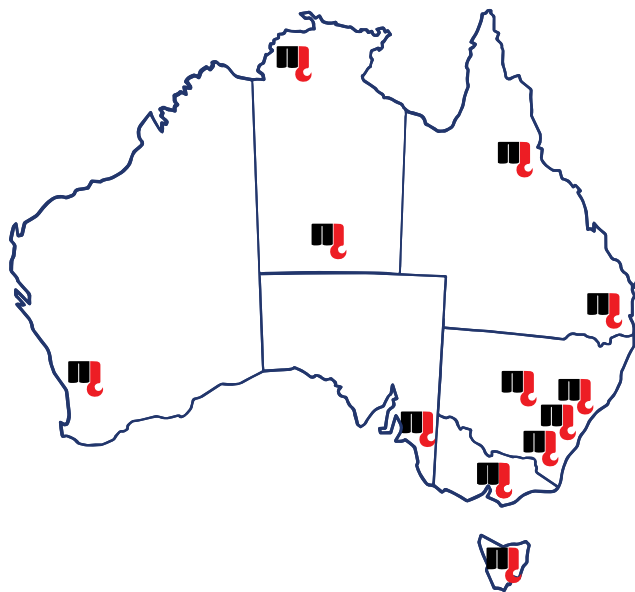


[illegible]

31



HEAD OFFICE (LONSDALE)	12-16 DORSET STREET
PHONE	08 8326 6300
EMAIL	ADMIN@MAXILIFT.COM.AU
MAXILIFT.COM.AU	



LET'S GET SOCIAL FOLLOW US ON



*Whilst every care has been taken in the preparation of the information and imagery contained within this document, Maxilift Australia will not be held liable for any errors or omissions in typing, information and/or imagery. All available information is considered correct at the time of printing (July 2021), noting that some information was unavailable at the time of printing (see 'CMD' within this catalogue). Any interested parties should always confirm details including but not limited to technical specifications with their respective Maxilift Australia Dealer, as information is subject to change without notice.*