

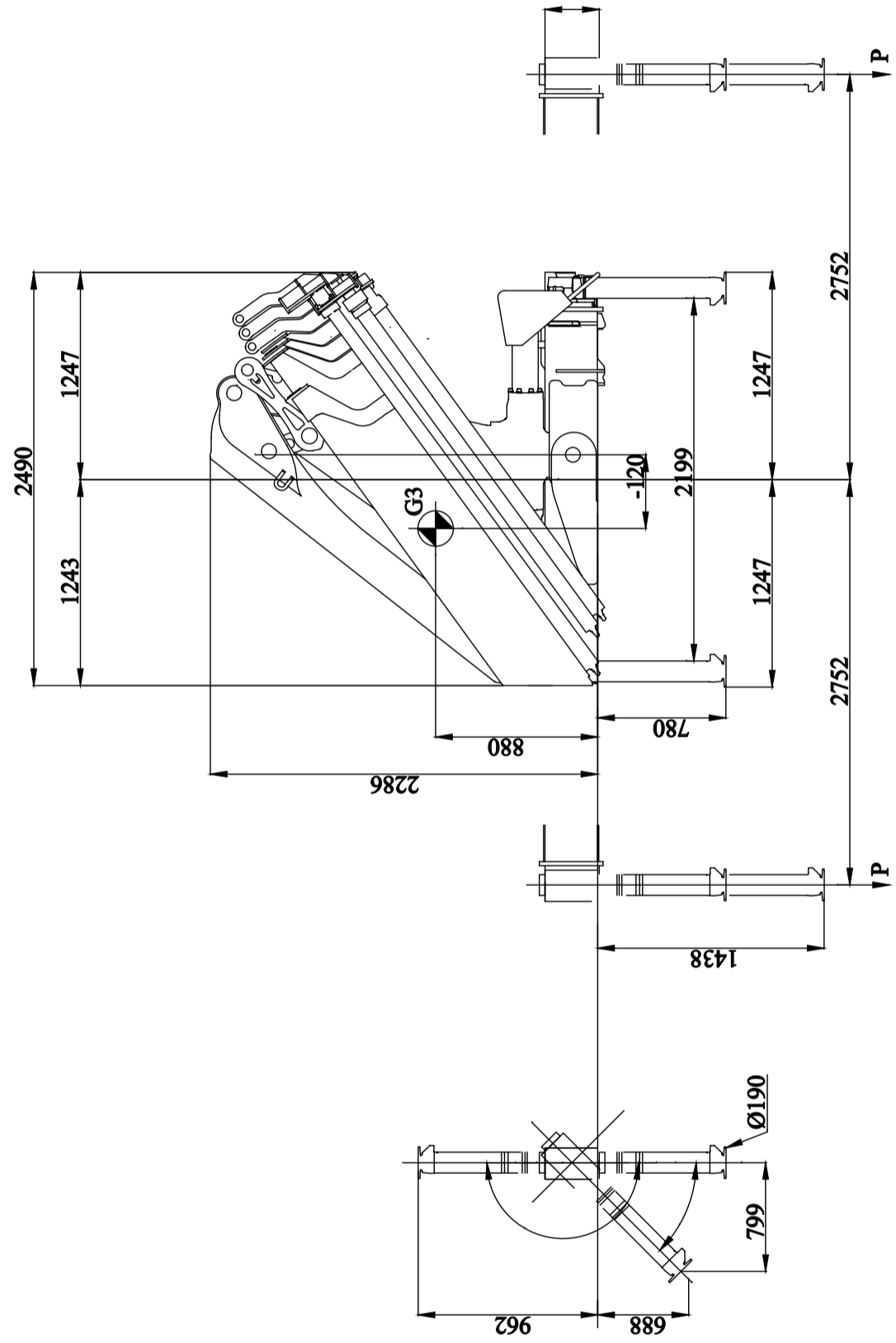
HIAB iX.158 HiDUO

iX. 158 HiDuo E-5

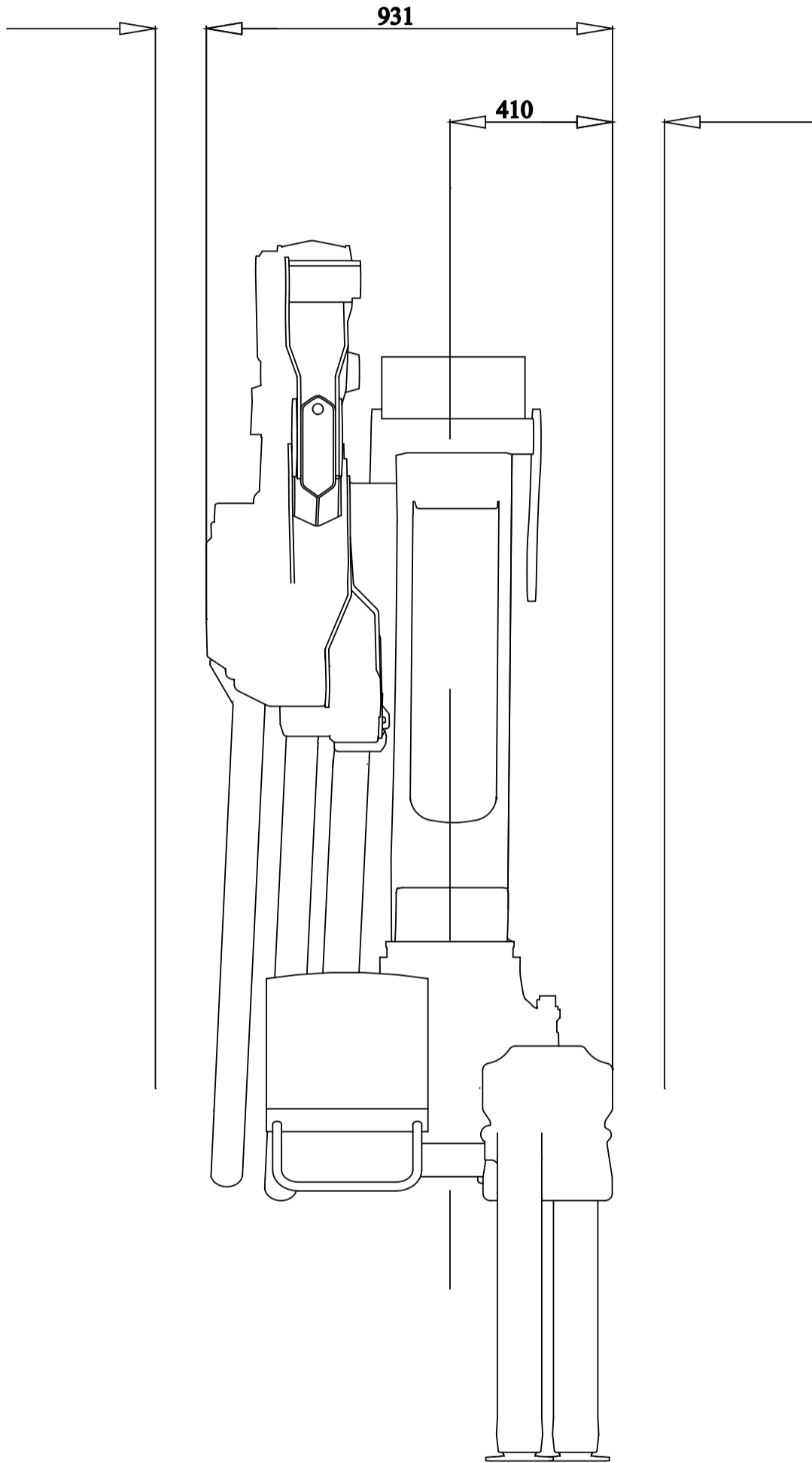


iX. 158 HiDuo E-5

Front View Folded (Metric)

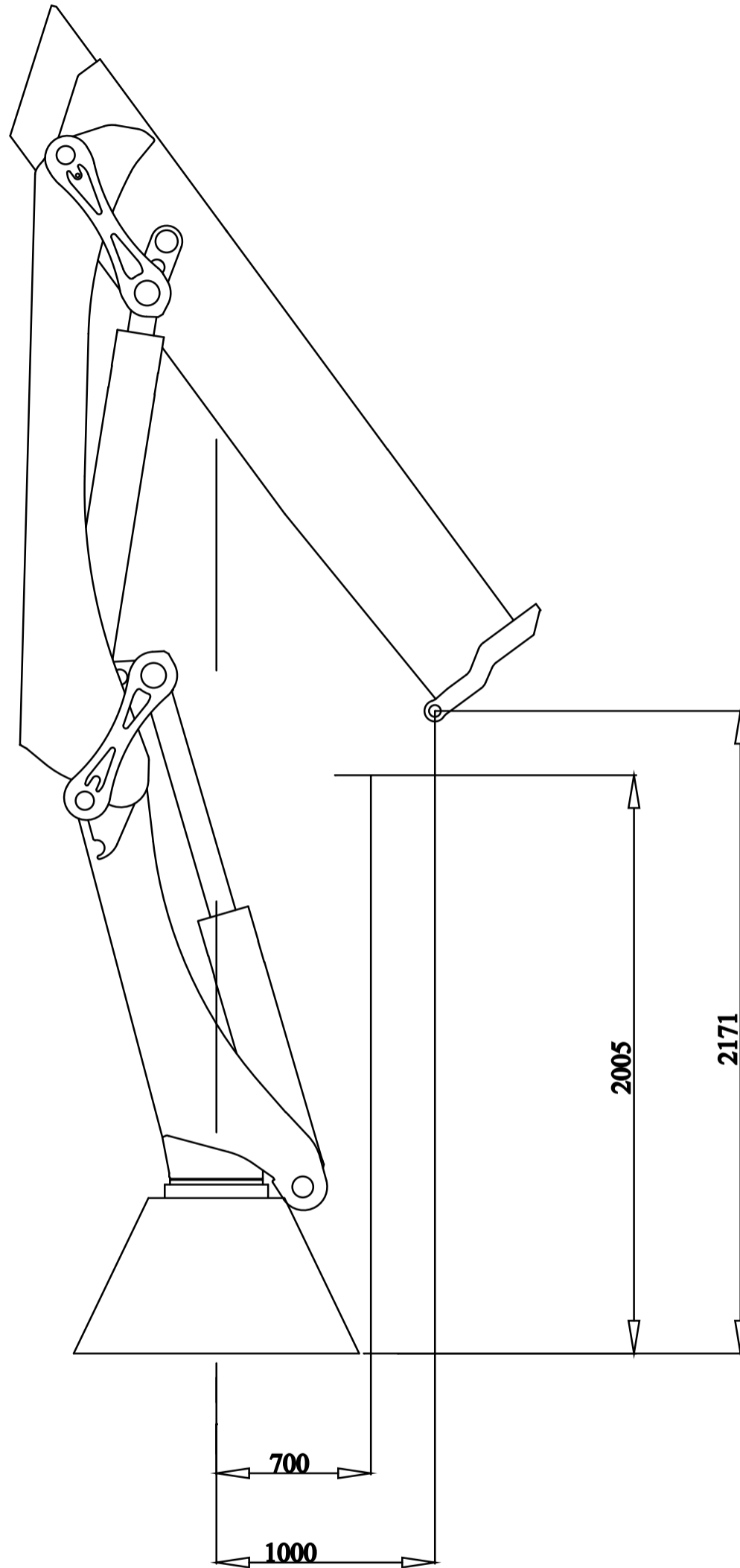


iX. 158 HiDuo E-5
Side View Folded (Metric)



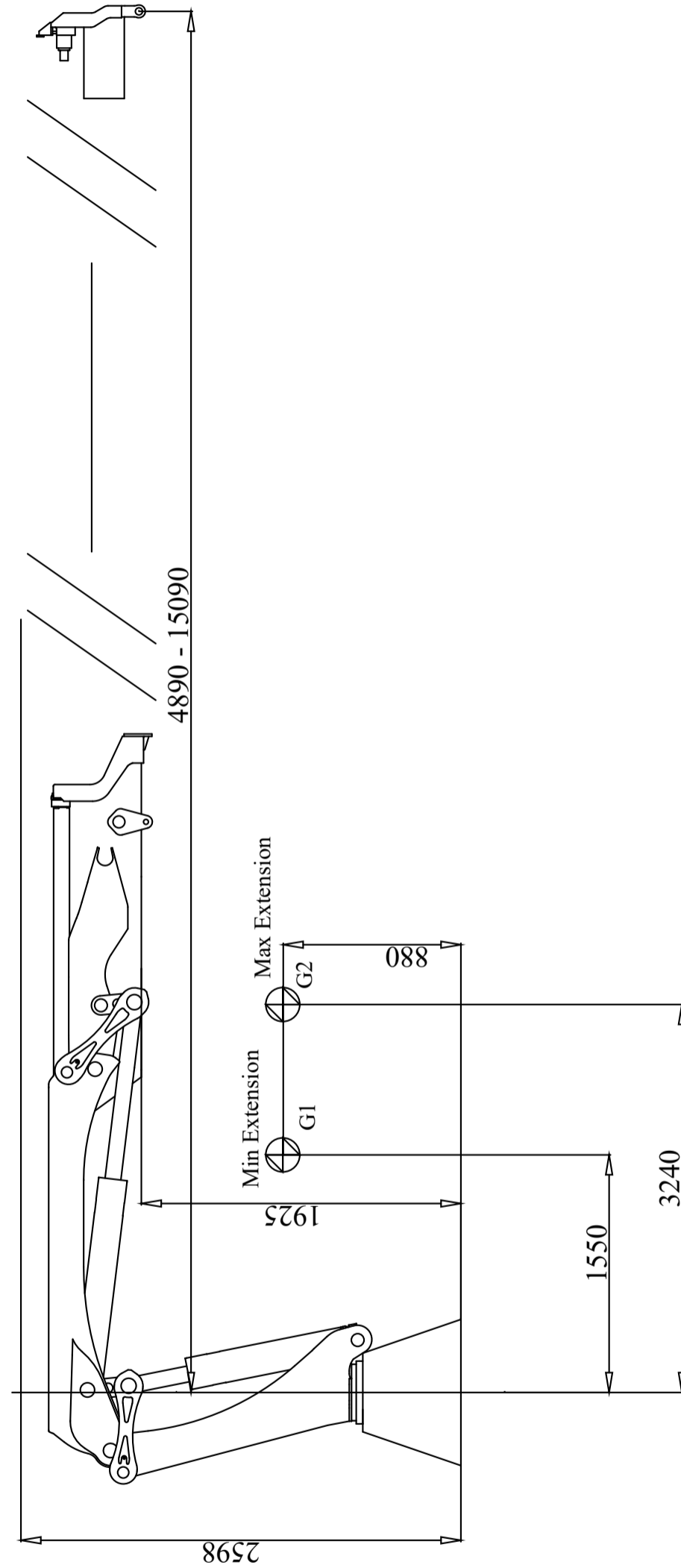
iX. 158 HiDuo E-5

Side View Unfolded Close In Area (Metric)



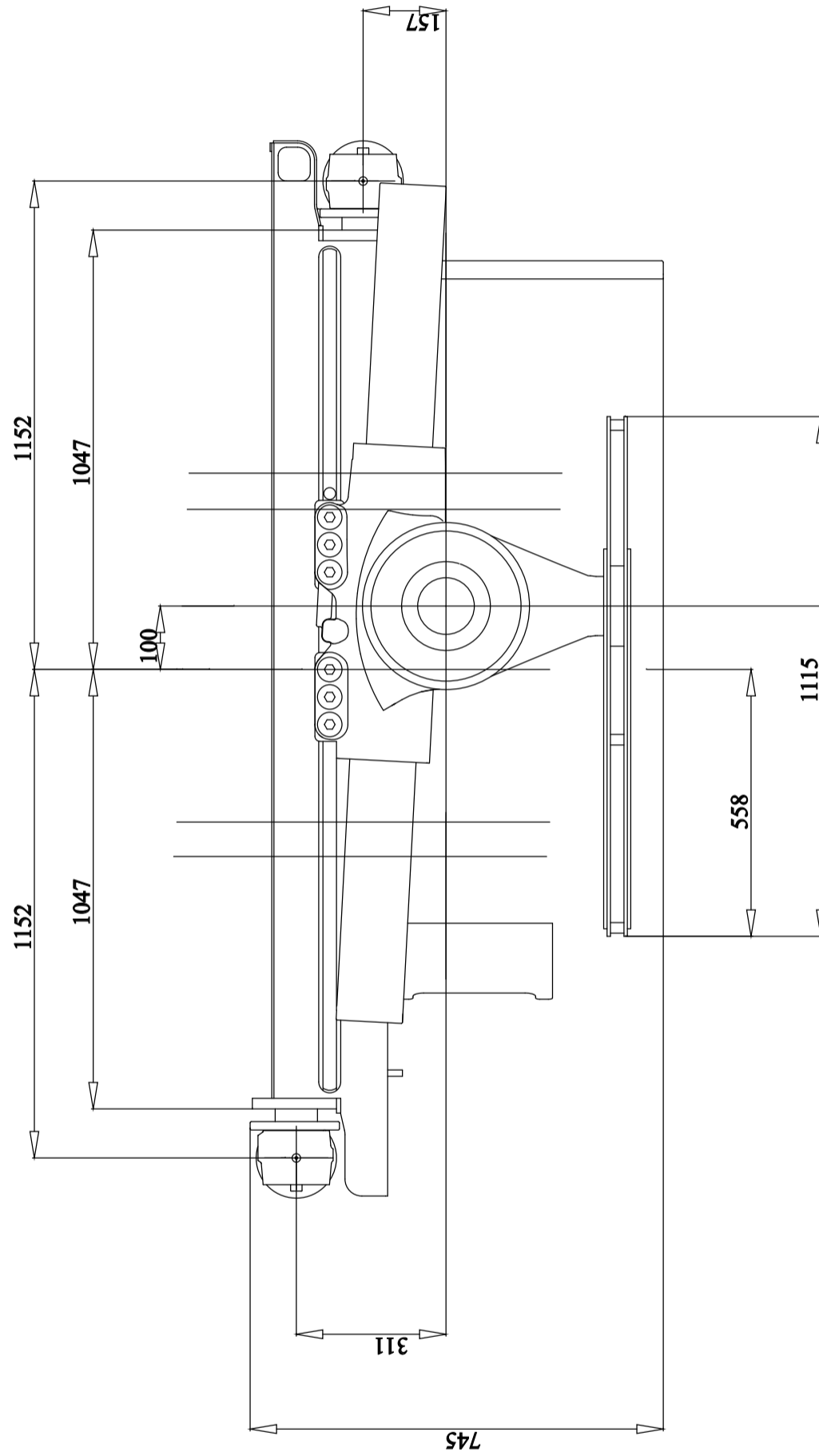
iX. 158 HiDuo E-5

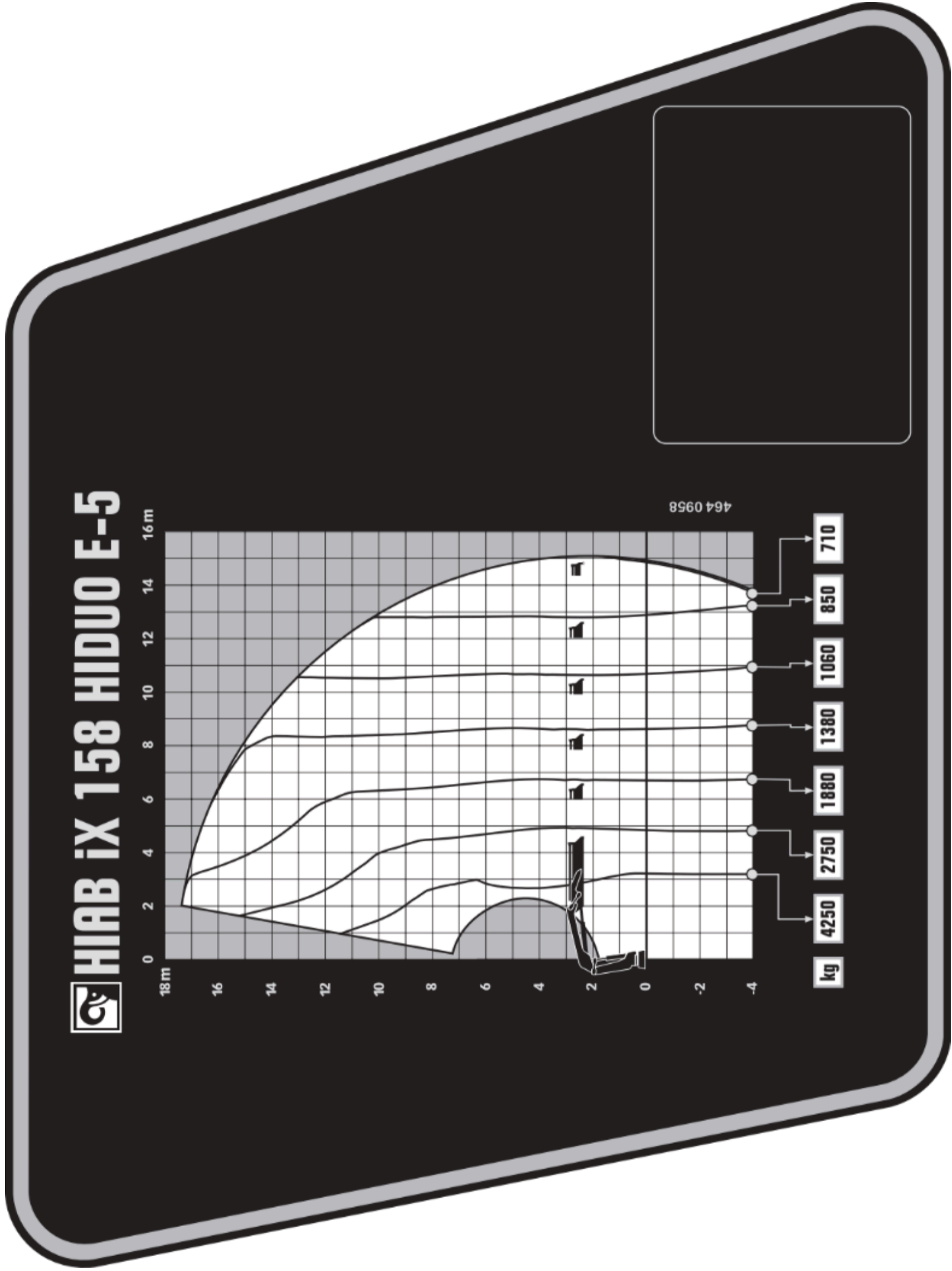
Side View Unfolded Stretched (Metric)

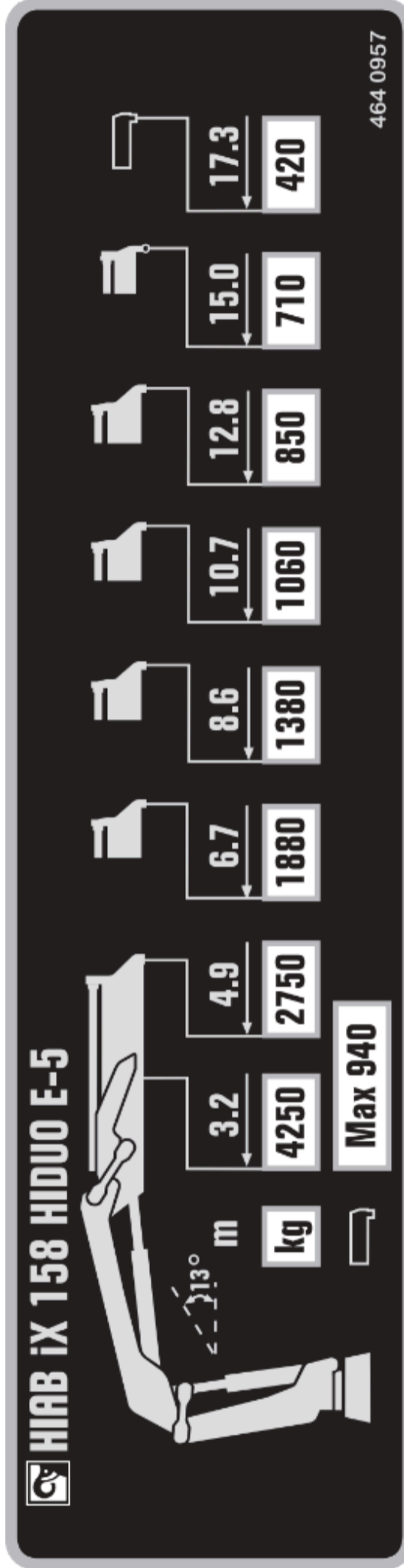


iX. 158 HiDuo E-5

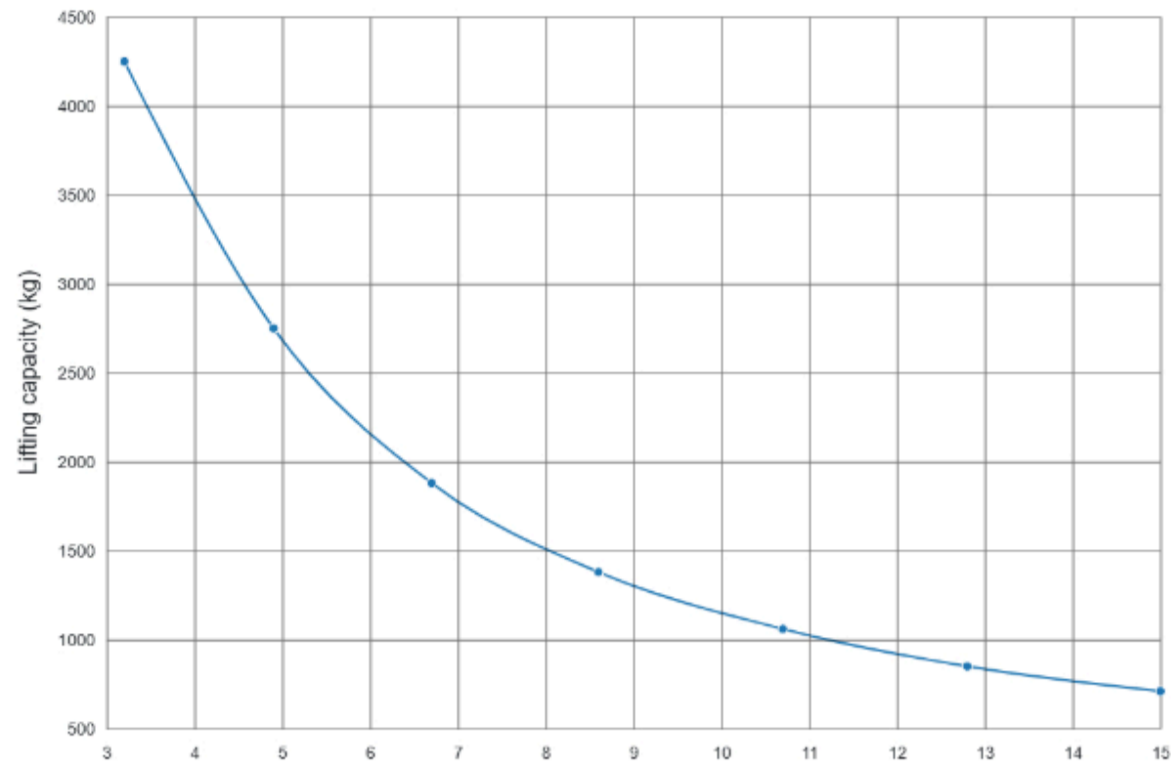
Top View (Metric)







IX. 158 HiDuo E-5



Outreach

Description	Unit	Value
Standard Outreach 1 (SOR1) - Standard load at std outreach with ADC 1 (SLC_ADC1)	m - kg	3.2 - 4250
Standard Outreach 2 (SOR2) - Standard load at std outreach with ADC 2 (SLC_ADC2)	m - kg	4.9 - 2750
Standard Outreach 3 (SOR3) - Standard load at std outreach with ADC 3 (SLC_ADC3)	m - kg	6.7 - 1880
Standard Outreach 4 (SOR4) - Standard load at std outreach with ADC 4 (SLC_ADC4)	m - kg	8.6 - 1380
Standard Outreach 5 (SOR5) - Standard load at std outreach with ADC 5 (SLC_ADC5)	m - kg	10.7 - 1060
Standard Outreach 6 (SOR6) - Standard load at std outreach with ADC 6 (SLC_ADC6)	m - kg	12.8 - 850
Standard Outreach 7 (SOR7) - Standard load at std outreach with ADC 7 (SLC_ADC7)	m - kg	15.0 - 710
HydOut Reach Std (HORS)	m	15.1
Hyd Boom Ext (HBE)	m	10.2
Manual Outreach 1 (MOR1)	m	17.3
Manual load capacity 1 (MLC1)	kg	420.0

Lifting capacity

Description	Unit	Value
Max Dynamic Moment (Mdyn)	kNm	186.0
Lifting Capacity (LC_ADC_kNm)	kNm	134.2
Lifting Capacity (LC_ADC_kNm)	tm	13.7
Lifting Height Above Installation Level Hydr (HAIL-H) / Lifting Height Above Installation Level Manual (HAIL-M)	m / m	17.5 / 19.8
Stress calculation moment (Mstat)	kNm	243.0

Oil and tank

Description	Unit	Value
Rec OilFlow Lo (Flow-Lo) - Rec OilFlow Hi (Flow-Hi)	l/min - l/min	45 - 55
Work Pressure (WP)	MPa	32.1
Oil In Tank (TankVol)	l	100.0
Tank Capacity (TankCap)	l	120.0

Slewing

Description	Unit	Value
Slewing Angle (SlewAng)	°	415
Max slope viable at full capacity (MaxAng)	°	5.0
Slewing Torque (SlewTorq)	kNm	21.6
Slewing Speed (SlewSp)	°/s	15.0
Lift Speed (LiftSp)	m/s	2.5
Max force on ground from stabiliser leg, max from all configurations (P_max)		253.0

Dimensions

Description	Unit	Value
Height fold. (3-1)	mm	2286.0
Ref 3-2 width folded- heartcrane frame left (3-3b)	mm	1247.0
Install.space need. (4-1)	mm	931.0

Weights

Description	Unit	Value
Weight of Crane (Weight)	kg	2030.0
add weight of frame attachment (add_WHT_FA)	kg	37.7
add weight of oil cooler (add_WHT_OC)	kg	27.0
Weight with legs (add_WHT_STAB)	kg	362.0
Weight of tank incl. Oil 0,87 kg/liter (add_WHT_TANK)	kg	116.0
		Total weight = 2572.7 kg