



X-HIDUO 118 E-5

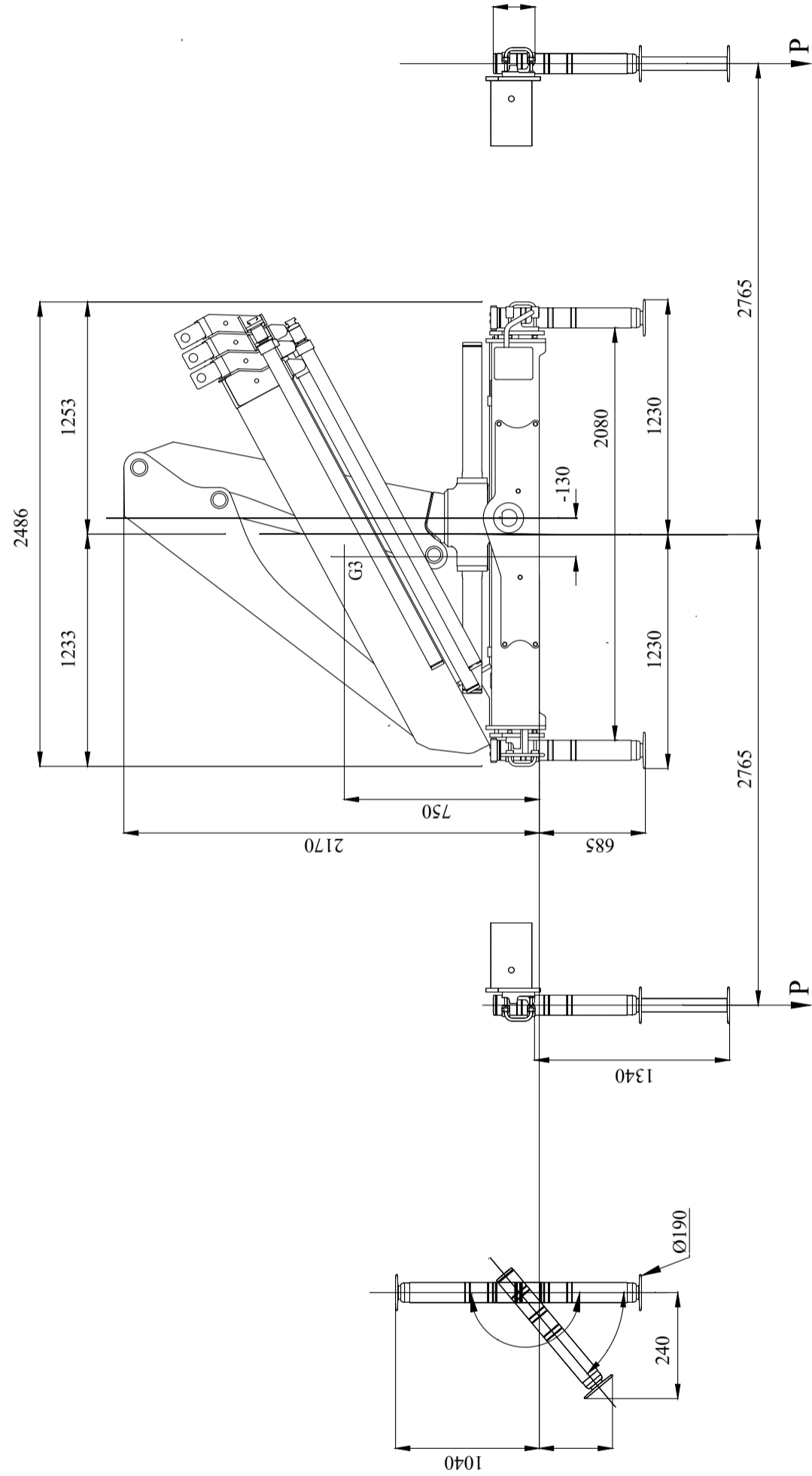
The ideal performance model within the HIAB range of loader crane products. Remote controlled loader crane. CE marked. A non CE version is also available. 11,3 Tm range capacity loader crane.

The HIAB X-HIDUO 118 is an 'optimal performance' light segment loader crane. HiDuo control system is the best price-performance remote controlled system you can choose, assuring high levels of safety matched to many functions that make any job easy. Take advantage of the many options and functions that support and protect your everyday work and business. The crane's outreach from 5,7m to 14,6m gives you the needed flexibility for carrying out jobs day after day, as a reliable partner. WARRANTY All HIAB loader cranes are backed by an industry-leading two-year warranty, with an optional third year available. Steel parts are covered by a five-year warranty or up to 100,000 load cycles, ensuring a continuous working life for your investment. The special nDurance paint protection finish further contributes to making the crane look and last longer.

Lifting capacity	480 - 3800 kg
Outreach	15 m
Weight	2081 kg

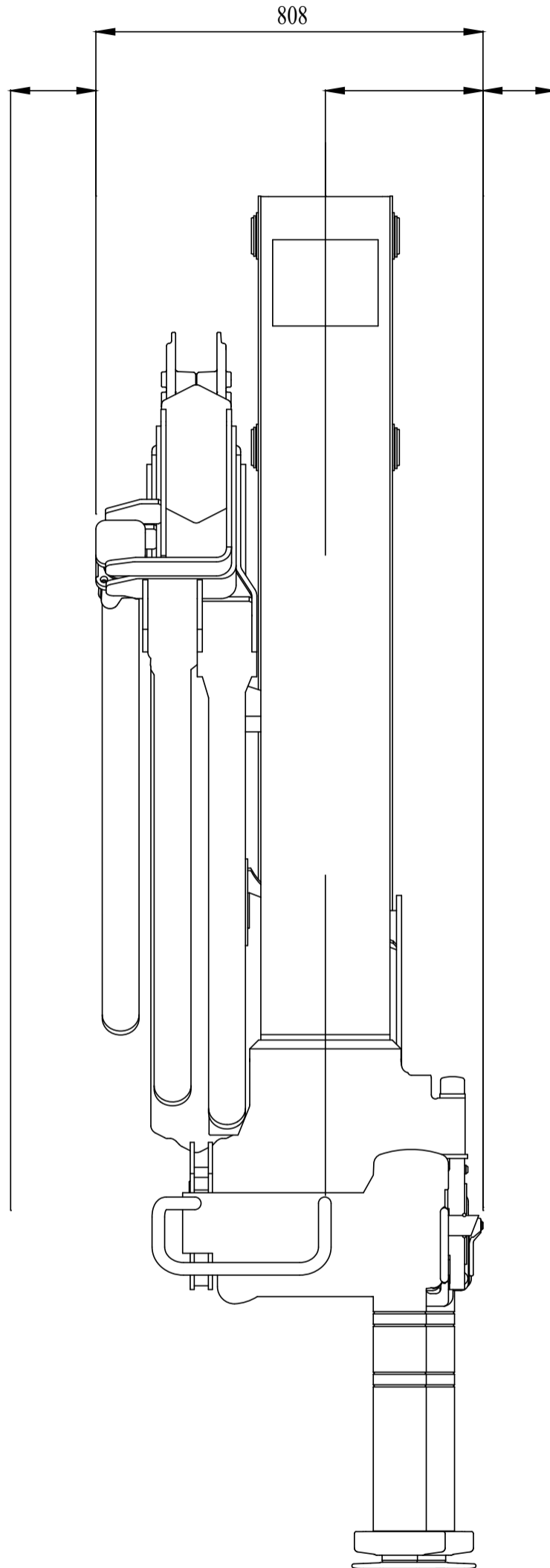
X-HIDUO 118 E-5

Front View Folded (Metric)



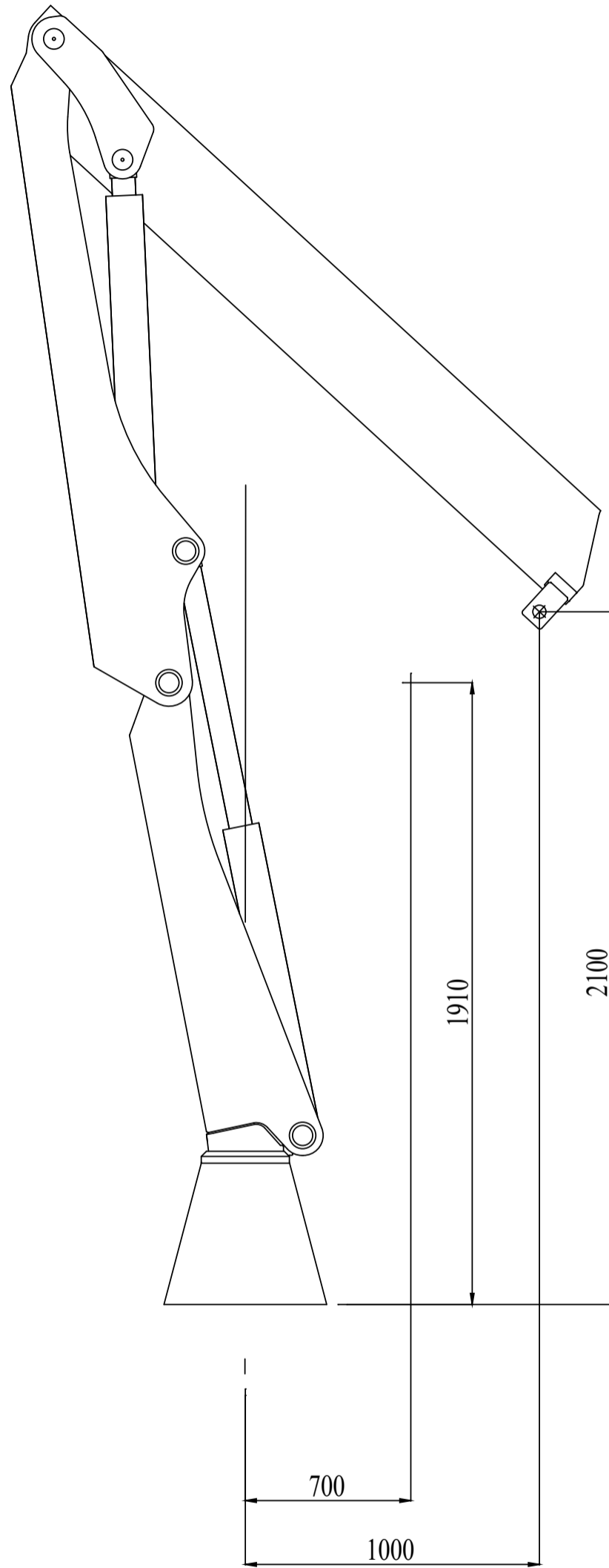
X-HIDUO 118 E-5

Side View Folded (Metric)



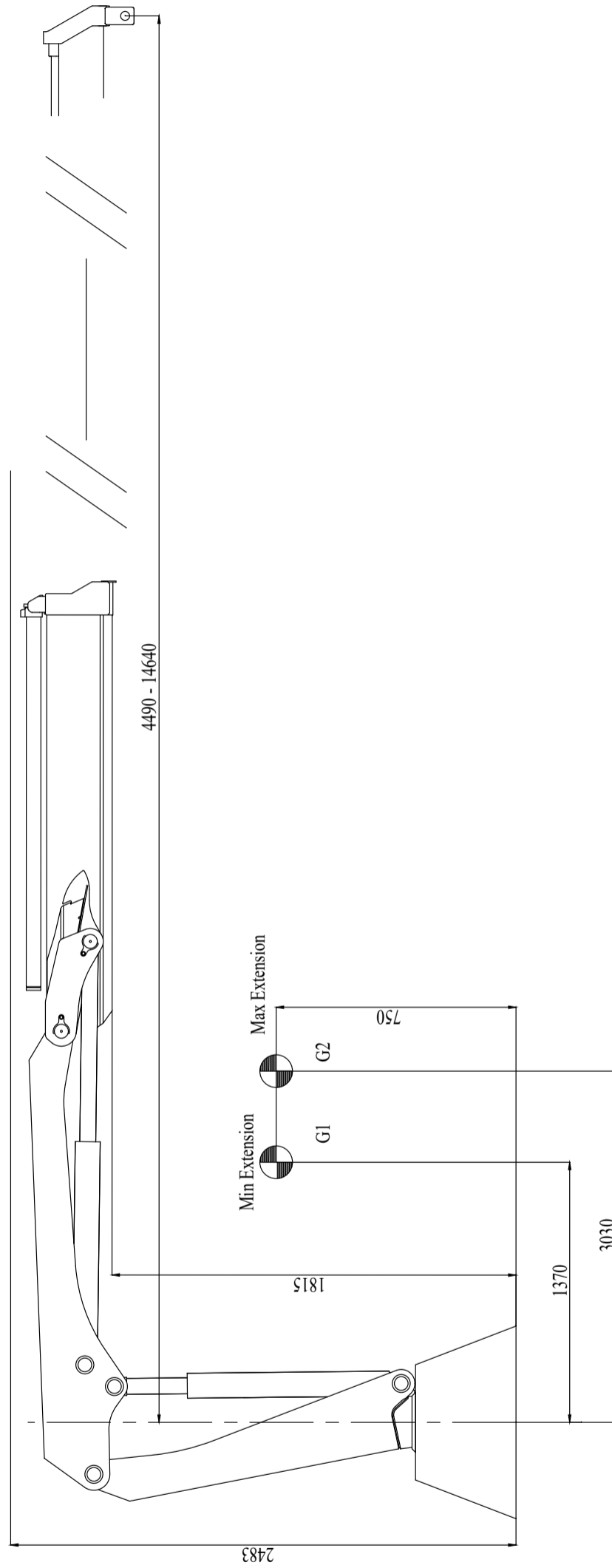
X-HIDUO 118 E-5

Side View Unfolded Close In Area (Metric)



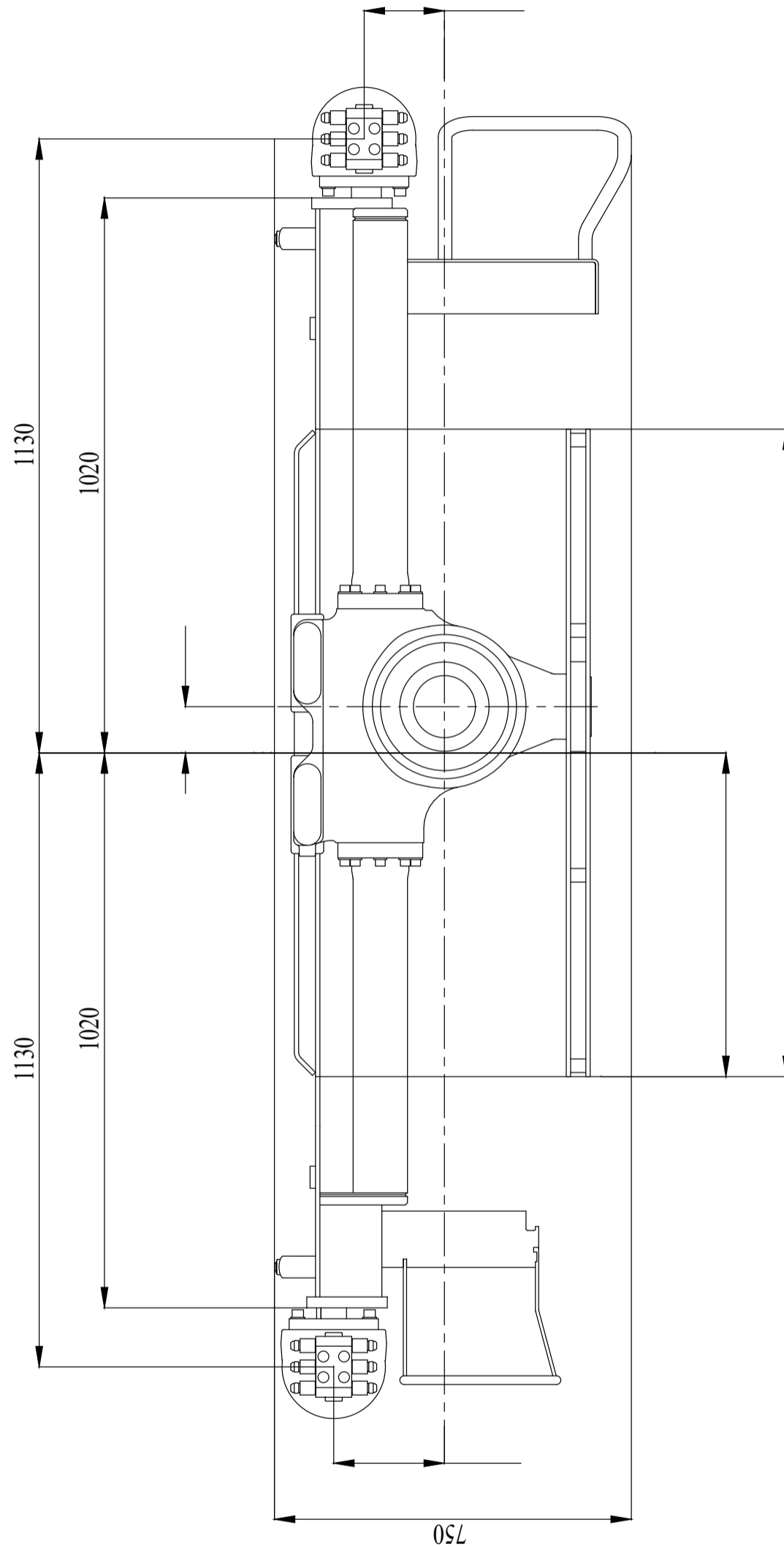
X-HIDUO 118 E-5

Side View Unfolded Stretched (Metric)



X-HIDUO 118 E-5

Top View (Metric)

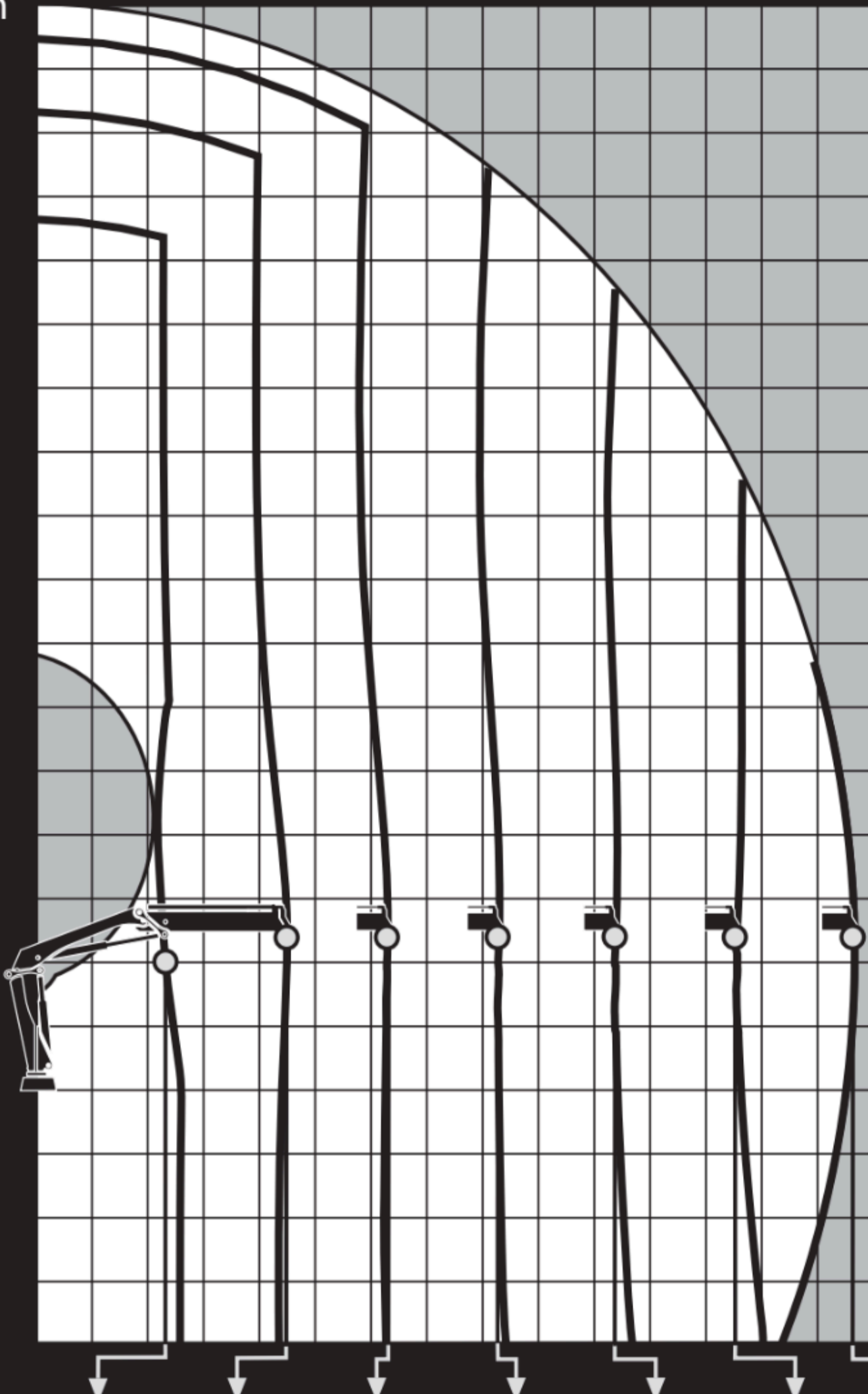




HIAB X-HIDUO 118E-5

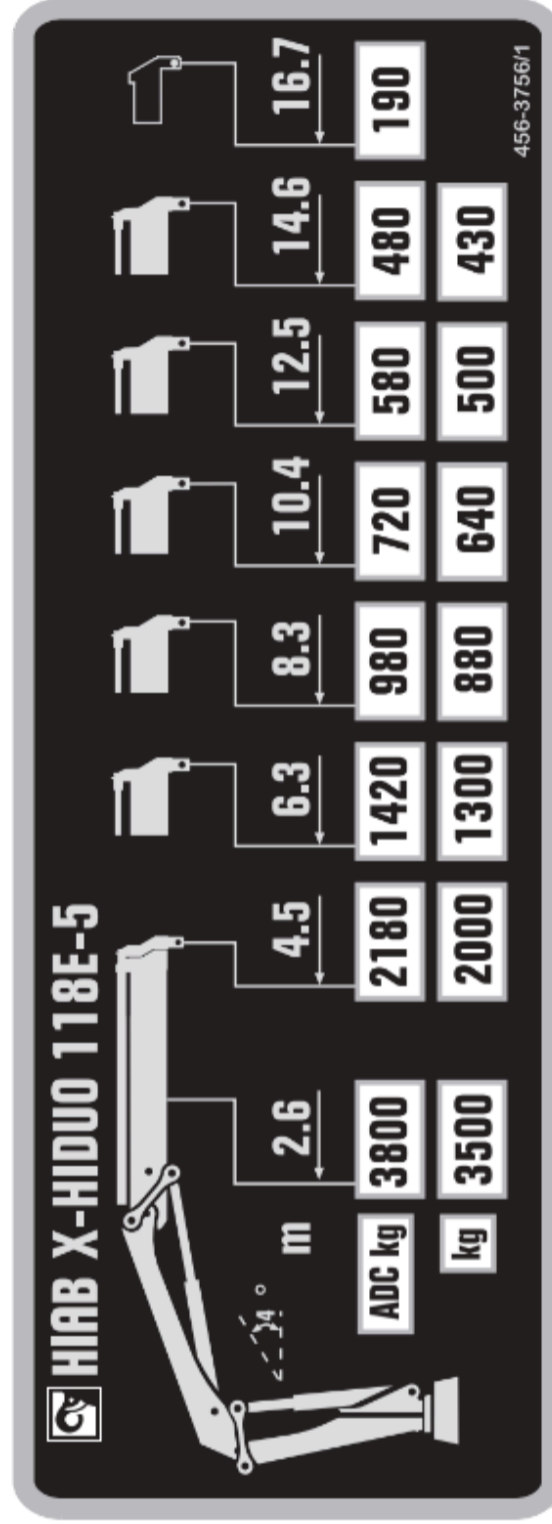
0 1 2 3 4 5 6 7 8 9 10 11 12 13 14 15m

17m

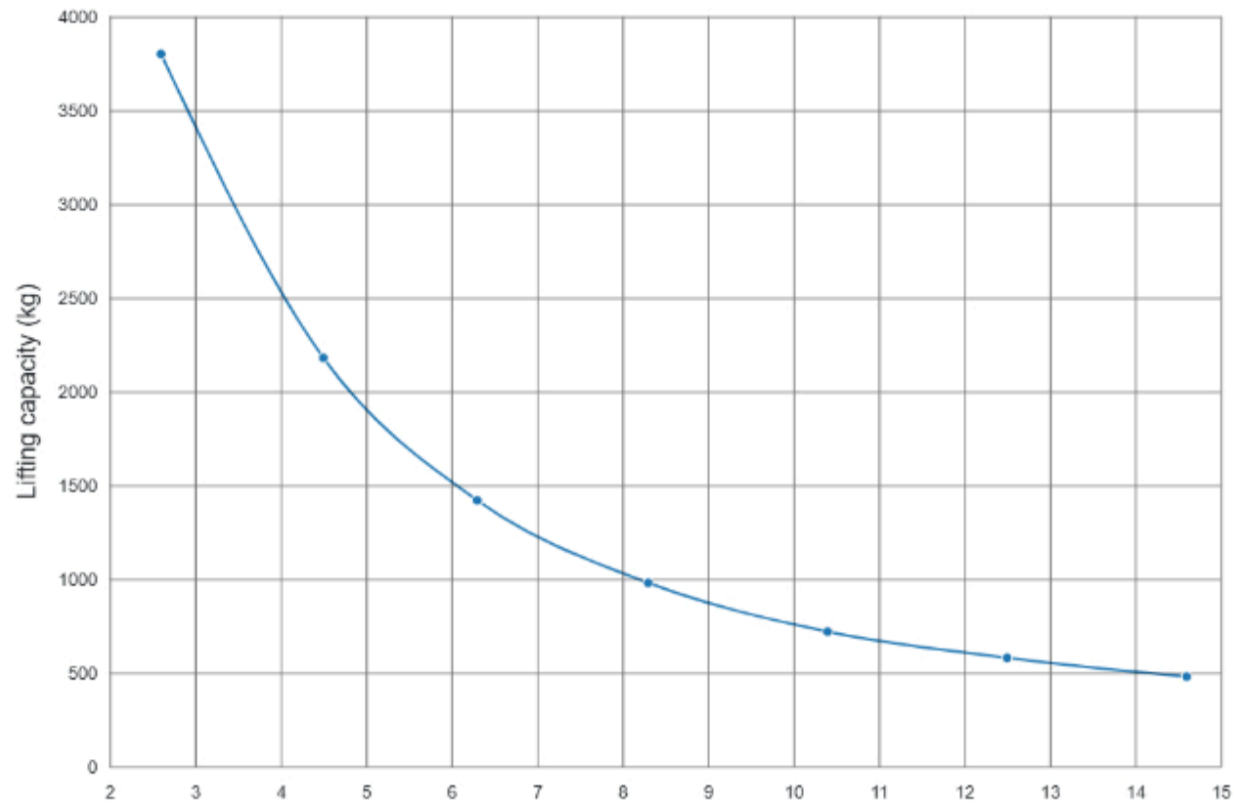


456-375711

ADC	3800	2180	1420	980	720	580	480
kg	3500	2000	1300	880	640	500	430



X-HIDUO 118 E-5



Outreach

Description	Unit	Value
Standard Outreach 1 (SOR1) - Standard load at std outreach with ADC 1 (SLC_ADC1)	m - kg	2.6 - 3800
Standard Outreach 2 (SOR2) - Standard load at std outreach with ADC 2 (SLC_ADC2)	m - kg	4.5 - 2180
Standard Outreach 3 (SOR3) - Standard load at std outreach with ADC 3 (SLC_ADC3)	m - kg	6.3 - 1420
Standard Outreach 4 (SOR4) - Standard load at std outreach with ADC 4 (SLC_ADC4)	m - kg	8.3 - 980
Standard Outreach 5 (SOR5) - Standard load at std outreach with ADC 5 (SLC_ADC5)	m - kg	10.4 - 720
Standard Outreach 6 (SOR6) - Standard load at std outreach with ADC 6 (SLC_ADC6)	m - kg	12.5 - 580
Standard Outreach 7 (SOR7) - Standard load at std outreach with ADC 7 (SLC_ADC7)	m - kg	14.6 - 480
HydOut Reach Std (HORS)	m	14.6
Hyd Boom Ext (HBE)	m	10.2
Manual Outreach 1 (MOR1)	m	16.7
Manual load capacity 1 (MLC1)	kg	190.0

Lifting capacity

Description	Unit	Value
Max Dynamic Moment (Mdyn)	kNm	143.0
Lifting Capacity (LC_ADC_kNm)	kNm	96.8
Lifting Capacity (LC_ADC_kNm)	tm	9.9
Lifting Height Above Installation Level Hydr (HAIL-H) / Lifting Height Above Installation Level Manual (HAIL-M)	m / m	17.0 / 19.1
Stress calculation moment (Mstat)	kNm	186.0

Oil and tank

Description	Unit	Value
Rec OilFlow Lo (Flow-Lo) - Rec OilFlow Hi (Flow-Hi)	l/min - l/min	45 - 55
Work Pressure (WP)	MPa	33.0

Slewing

Description	Unit	Value
Slewing Angle (SlewAng)	°	406
Max slope viable at full capacity (MaxAng)	°	5.0
Slewing Torque (SlewTorq)	kNm	14.1
Lift Speed (LiftSp)	m/s	2.7

Dimensions

Description	Unit	Value
Height fold. (3-1)	mm	2170.0
Ref 3-2 width folded- heartcrane frame left (3-3b)	mm	1253.0
Install.space need. (4-1)	mm	808.0

Weights

Description	Unit	Value
Weight of Crane (Weight)	kg	1730.0
add weight of frame attachment (add_WHT_FA)	kg	32.0
add weight of oil cooler (add_WHT_OC)	kg	25.0
Weight with legs (add_WHT_STAB)	kg	294.0

Total weight = 2081.0 kg