



X-HIDUO 082 E-4

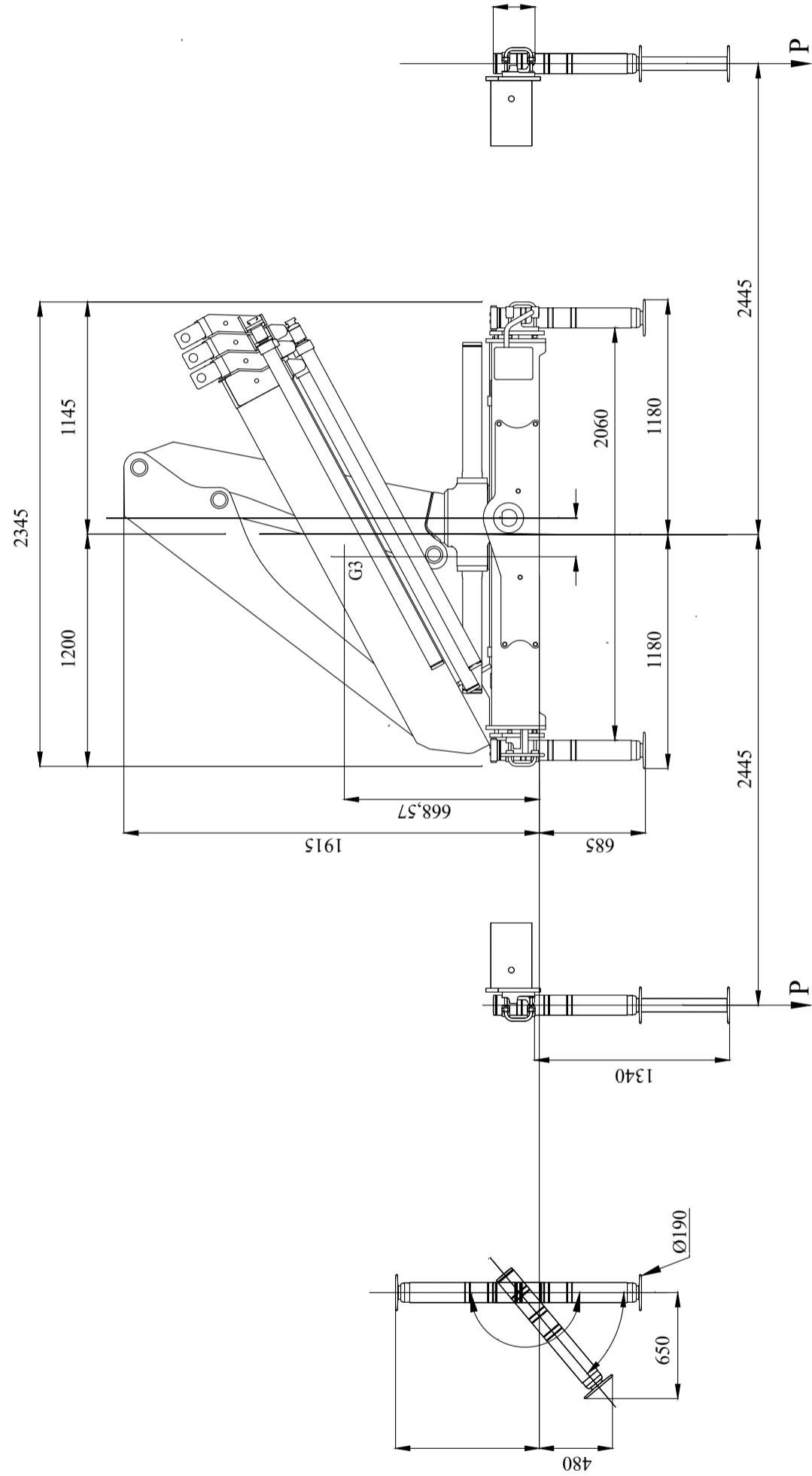
The ideal performance model within the HIAB range of loader crane products. Remote controlled loader crane. CE marked. A non CE version is also available. 8,1 Tm range capacity loader crane.

The HIAB X-HIDUO 082 is an 'optimal performance' light segment loader crane. HiDuo control system is the best price-performance remote controlled system you can choose, assuring high levels of safety matched to many functions that make any job easy. Take advantage of the many options and functions that support and protect your everyday work and business. The crane's outreach from 5,7m to 11,6m gives you the needed flexibility for carrying out jobs day after day, as a reliable partner. WARRANTY All HIAB loader cranes are backed by an industry-leading two-year warranty, with an optional third year available. Steel parts are covered by a five-year warranty or up to 100,000 load cycles, ensuring a continuous working life for your investment. The special nDurance paint protection finish further contributes to making the crane look and last longer.

Lifting capacity	470 - 2900 kg
Outreach	12 m
Weight	1403 kg

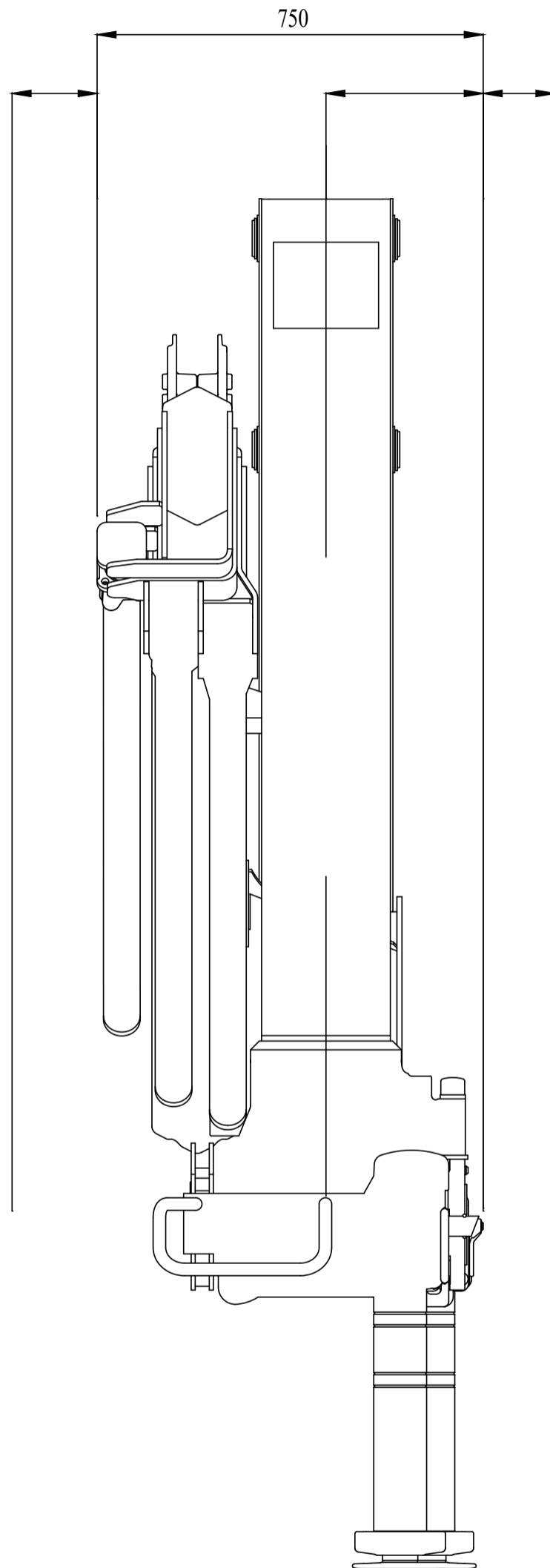
X-HIDUO 082 E-4

Front View Folded (Metric)



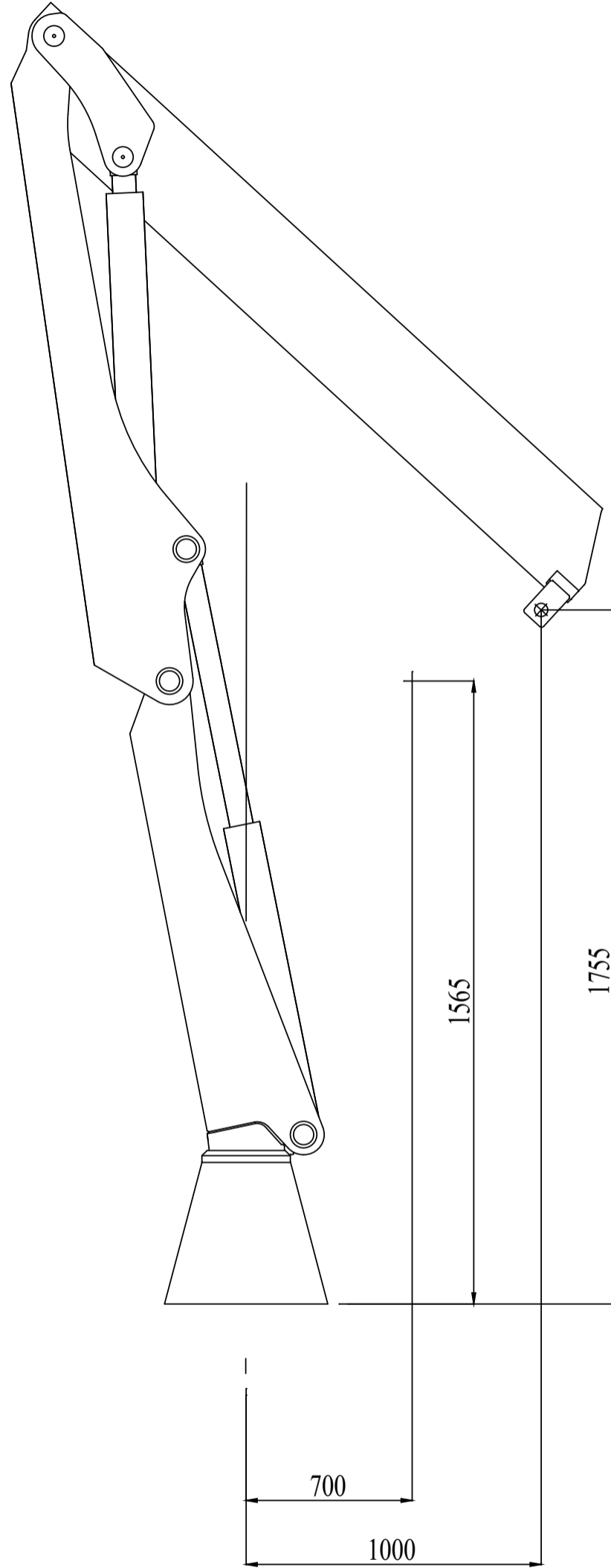
X-HIDUO 082 E-4

Side View Folded (Metric)



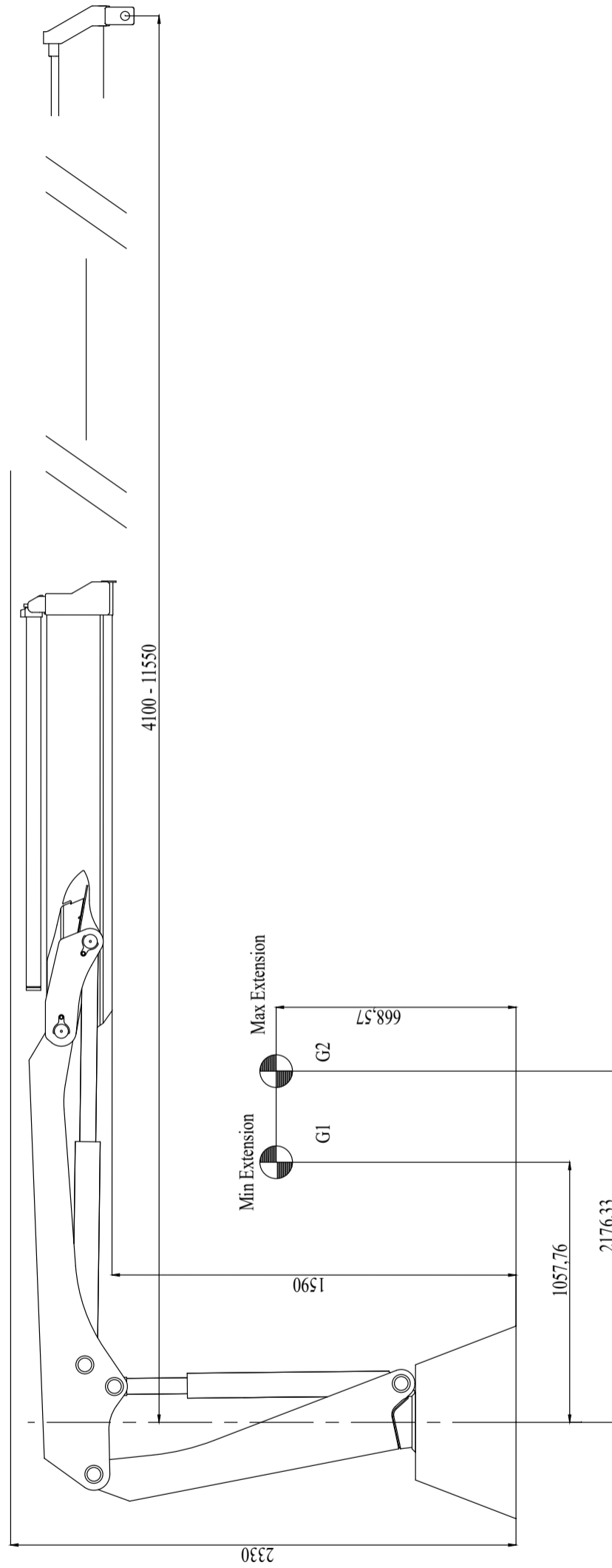
X-HIDUO 082 E-4

Side View Unfolded Close In Area (Metric)



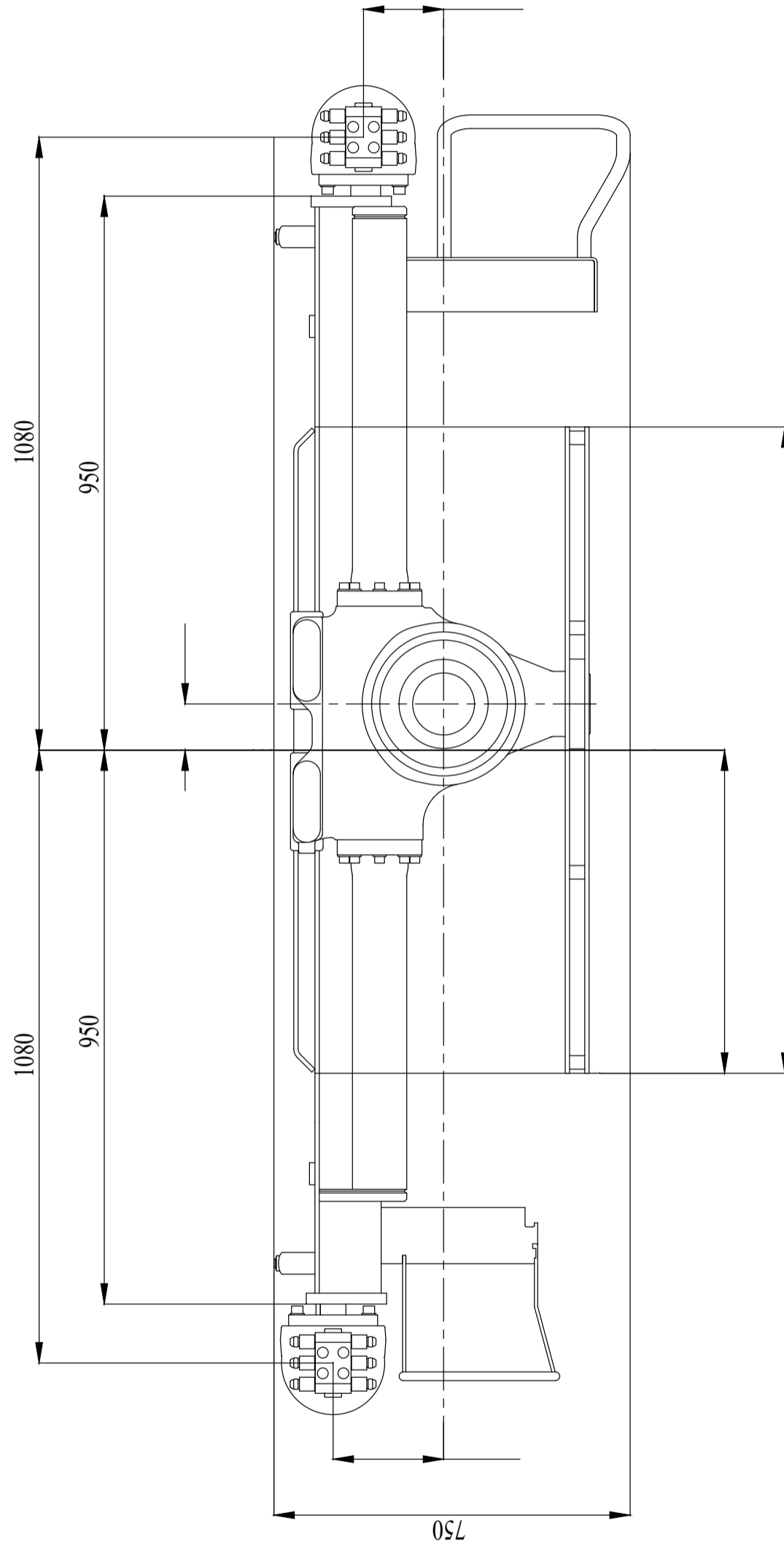
X-HIDUO 082 E-4

Side View Unfolded Stretched (Metric)



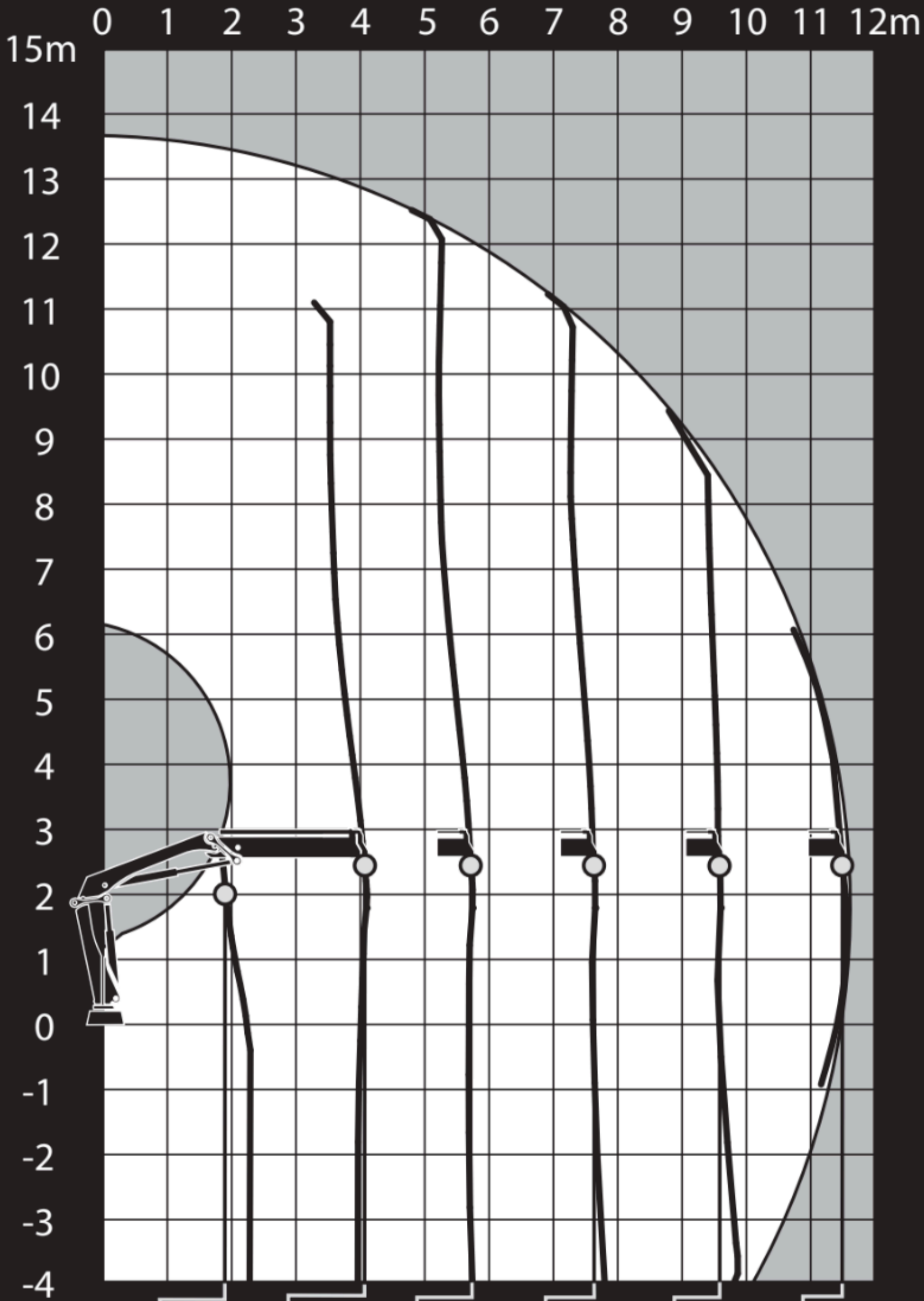
X-HIDUO 082 E-4

Top View (Metric)



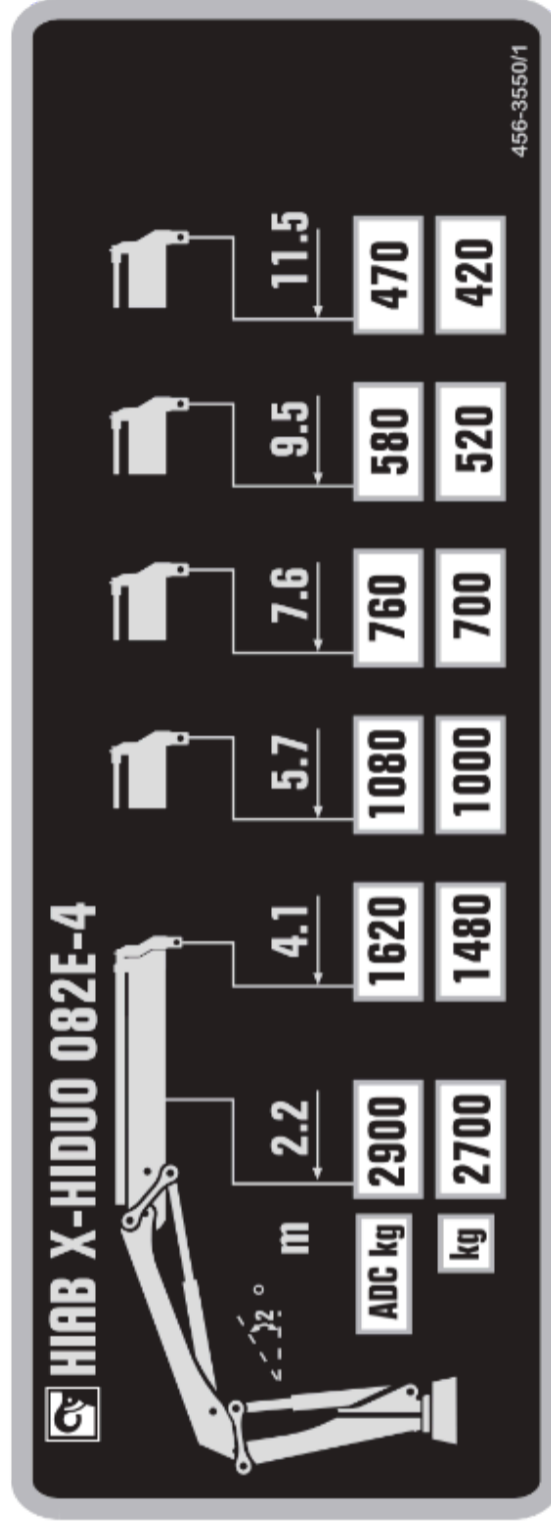


HIAB X-HIDUO 082E-4

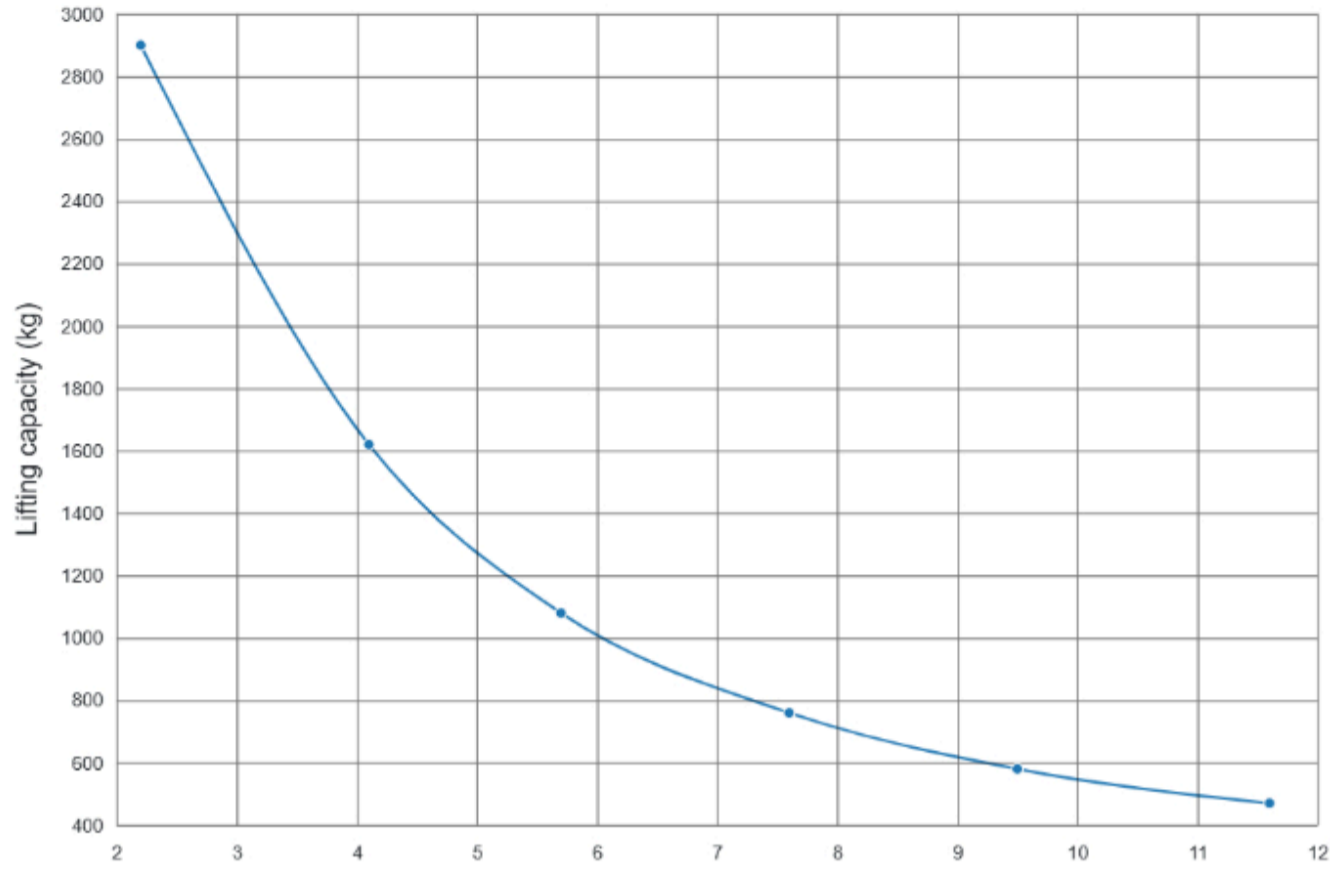


ADC	2900	1620	1080	760	580	470
kg	2700	1480	1000	700	520	420

456-3551/1



X-HIDUO 082 E-4



Outreach

Description	Unit	Value
Standard Outreach 1 (SOR1) - Standard load at std outreach with ADC 1 (SLC_ADC1)	m - kg	2.2 - 2900
Standard Outreach 2 (SOR2) - Standard load at std outreach with ADC 2 (SLC_ADC2)	m - kg	4.1 - 1620
Standard Outreach 3 (SOR3) - Standard load at std outreach with ADC 3 (SLC_ADC3)	m - kg	5.7 - 1080
Standard Outreach 4 (SOR4) - Standard load at std outreach with ADC 4 (SLC_ADC4)	m - kg	7.6 - 760
Standard Outreach 5 (SOR5) - Standard load at std outreach with ADC 5 (SLC_ADC5)	m - kg	9.5 - 580
Standard Outreach 6 (SOR6) - Standard load at std outreach with ADC 6 (SLC_ADC6)	m - kg	11.6 - 470
HydOut Reach Std (HORS)	m	11.6
Hyd Boom Ext (HBE)	m	7.5

Lifting capacity

Description	Unit	Value
Max Dynamic Moment (Mdyn)	kNm	93.0
Lifting Capacity (LC_ADC_kNm)	kNm	65.0
Lifting Capacity (LC_ADC_kNm)	tm	6.6
Stress calculation moment (Mstat)	kNm	122.0

Oil and tank

Description	Unit	Value
Rec OilFlow Lo (Flow-Lo) - Rec OilFlow HI (Flow-HI)	l/min - l/min	45 - 55
Work Pressure (WP)	MPa	30.3

Slewing

Description	Unit	Value
Slewing Angle (SlewAng)	°	406
Lift Speed (LiftSp)	m/s	2.0

Dimensions

Description	Unit	Value
Height fold. (3-1)	mm	1915.0
Ref 3-2 width folded- heartcrane frame left (3-3b)	mm	1145.0
Install.space need. (4-1)	mm	750.0

Weights

Description	Unit	Value
Weight of Crane (Weight)	kg	1140.0
add weight of frame attachment (add_WHT_FA)	kg	28.0
add weight of oil cooler (add_WHT_OC)	kg	23.0
Weight with legs (add_WHT_STAB)	kg	212.0

Total weight = 1403.0 kg