



## X-HIDUO 062 D-4

The ideal performance model within the HIAB range of loader crane products. Remote controlled loader crane. CE marked. A non CE version is also available. 5,4 Tm range capacity loader crane.

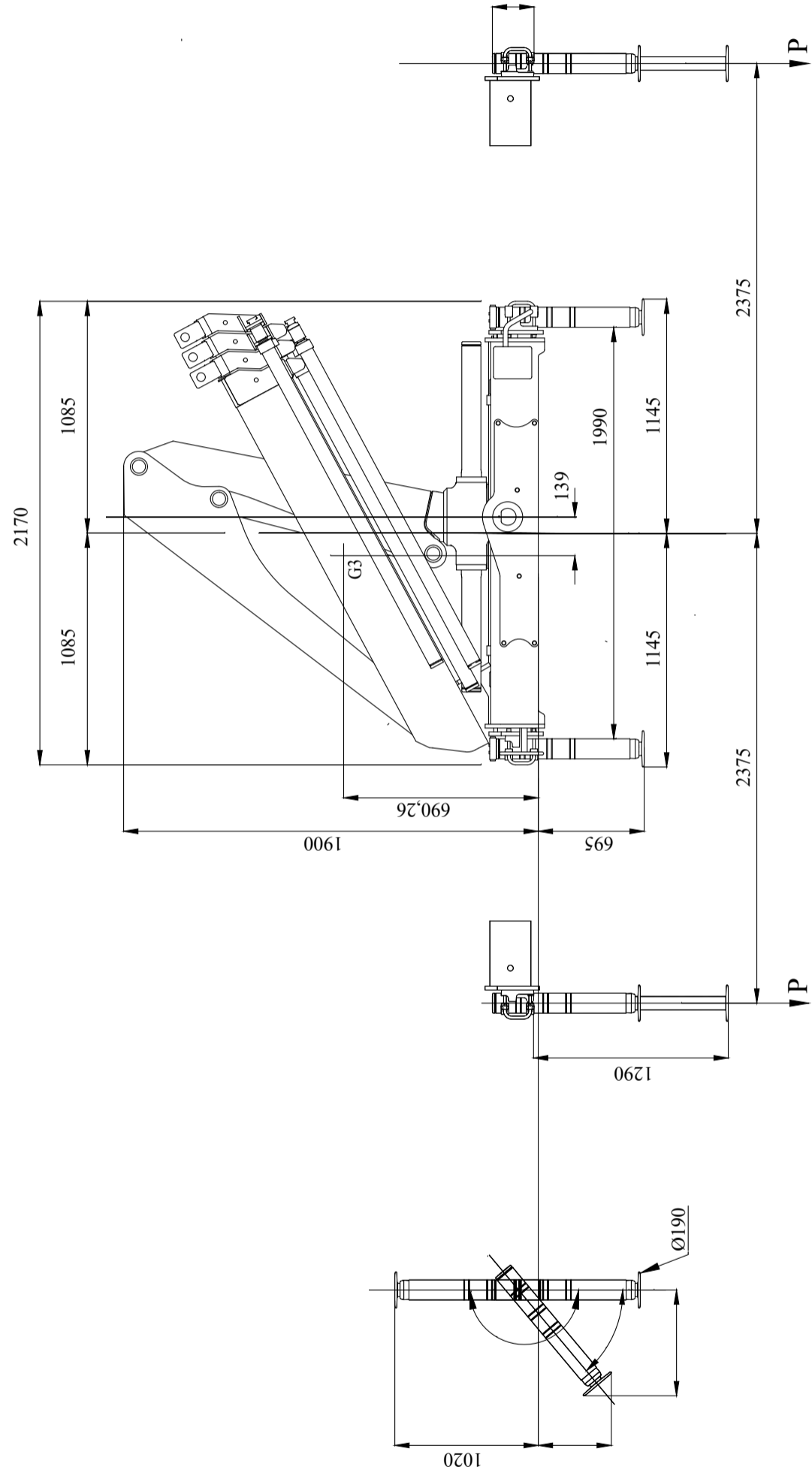
The HIAB X-HIDUO 062 is an 'optimal performance' light segment loader crane. HiDuo control system is the best price-performance remote controlled system you can choose, assuring high levels of safety matched to many functions that make any job easy. Take advantage of the many options and functions that support and protect your everyday work and business. The crane's outreach from 5,3m to 11,3m gives you the needed flexibility for carrying out jobs day after day, as a reliable partner. The industry leading two years warranty coverage matched to the three years for steel parts assure a continuous working life of the crane. The special nDurance paint protection finish further contributes to making the crane look and last longer.

---

<b>Lifting capacity</b>	350 - 1560 kg
<b>Outreach</b>	11 m
<b>Weight</b>	1128 kg

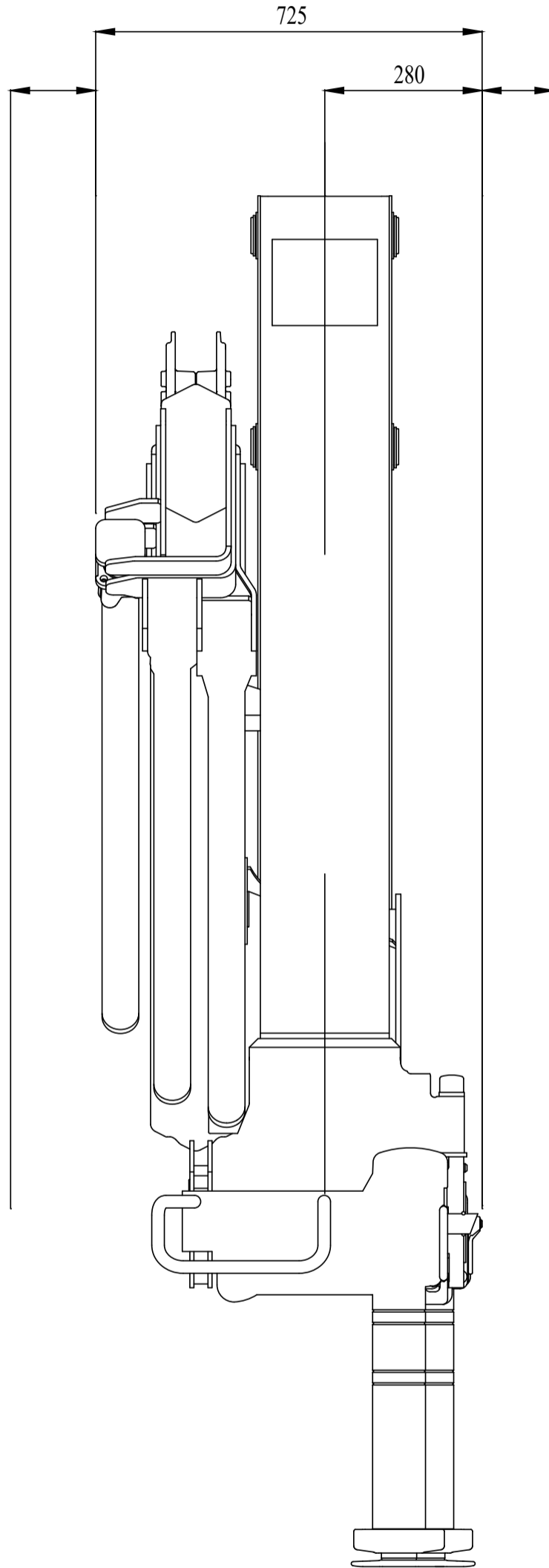
# X-HIDUO 062 D-4

Front View Folded (Metric)



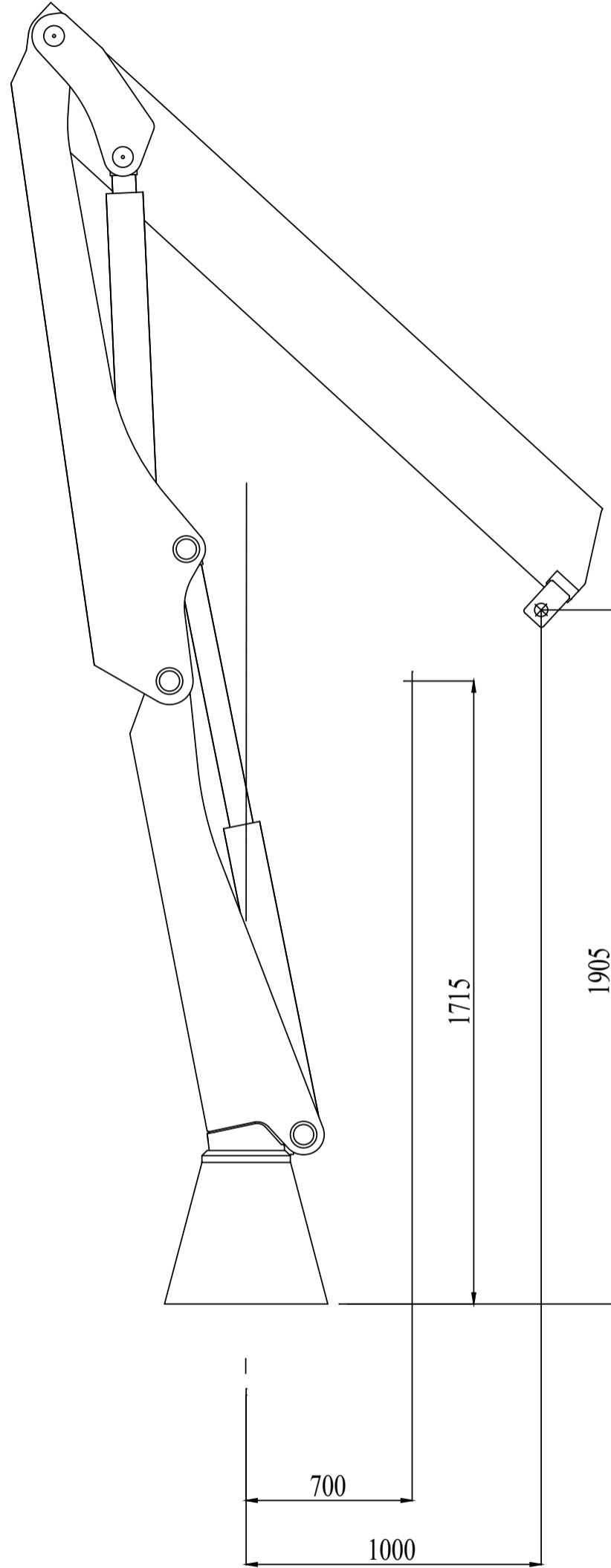
# X-HIDUO 062 D-4

Side View Folded (Metric)



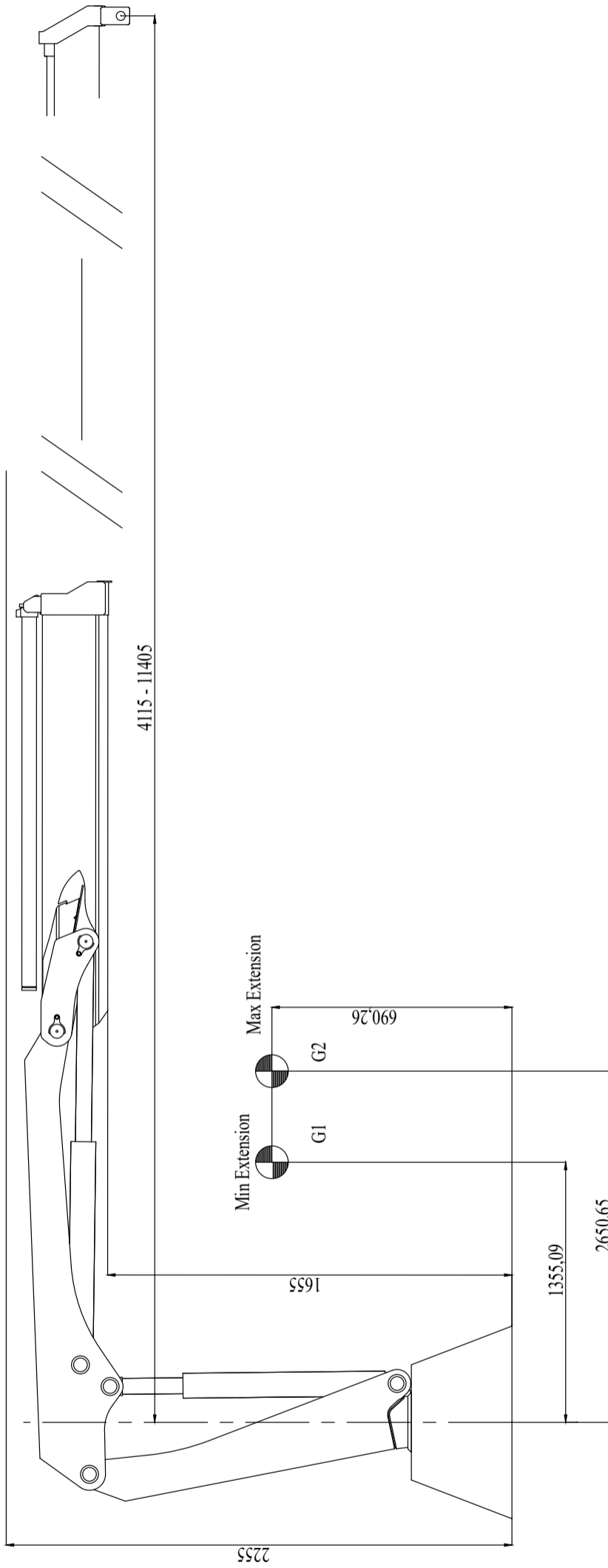
## X-HIDUO 062 D-4

Side View Unfolded Close In Area (Metric)



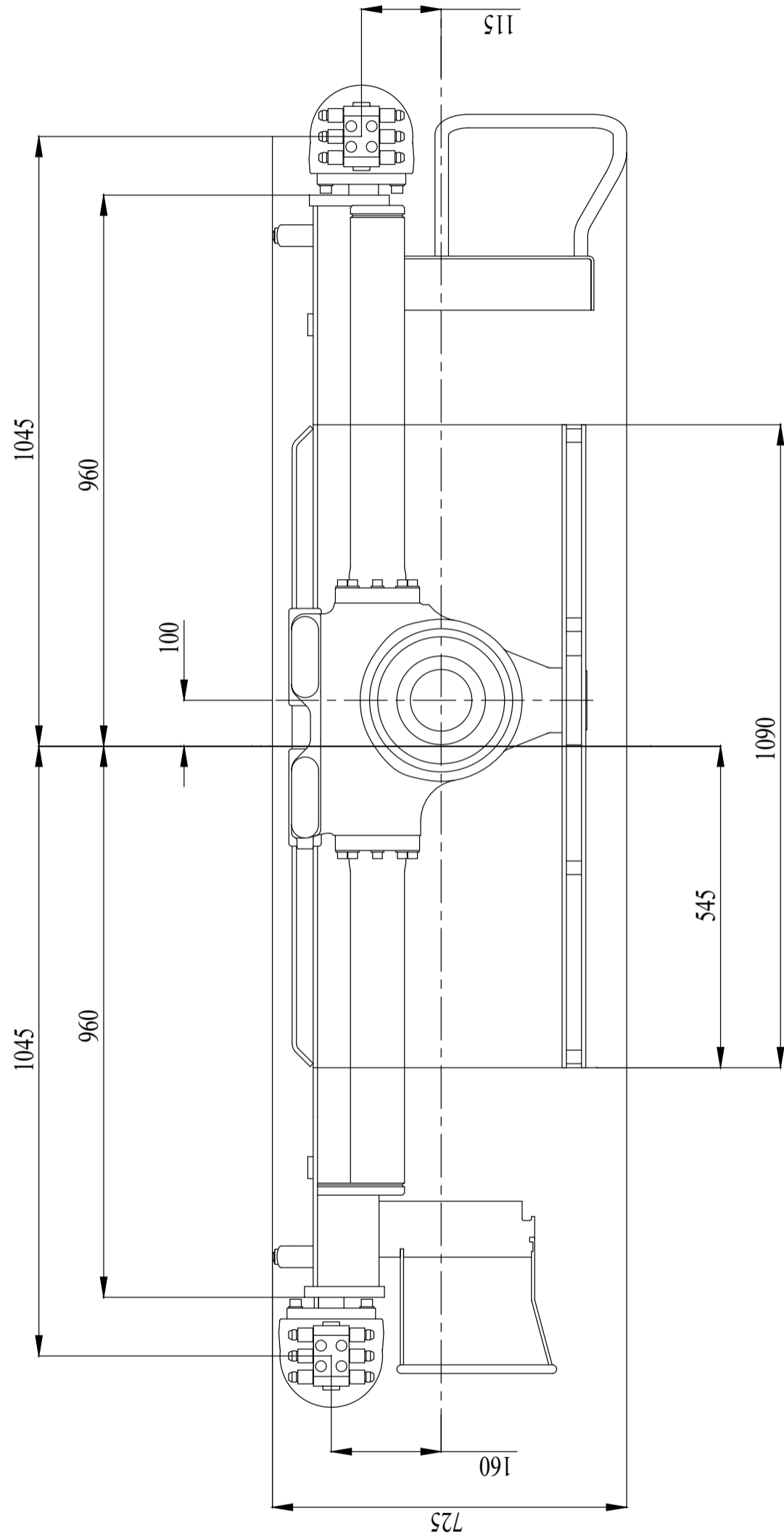
# X-HIDUO 062 D-4

## Side View Unfolded Stretched (Metric)



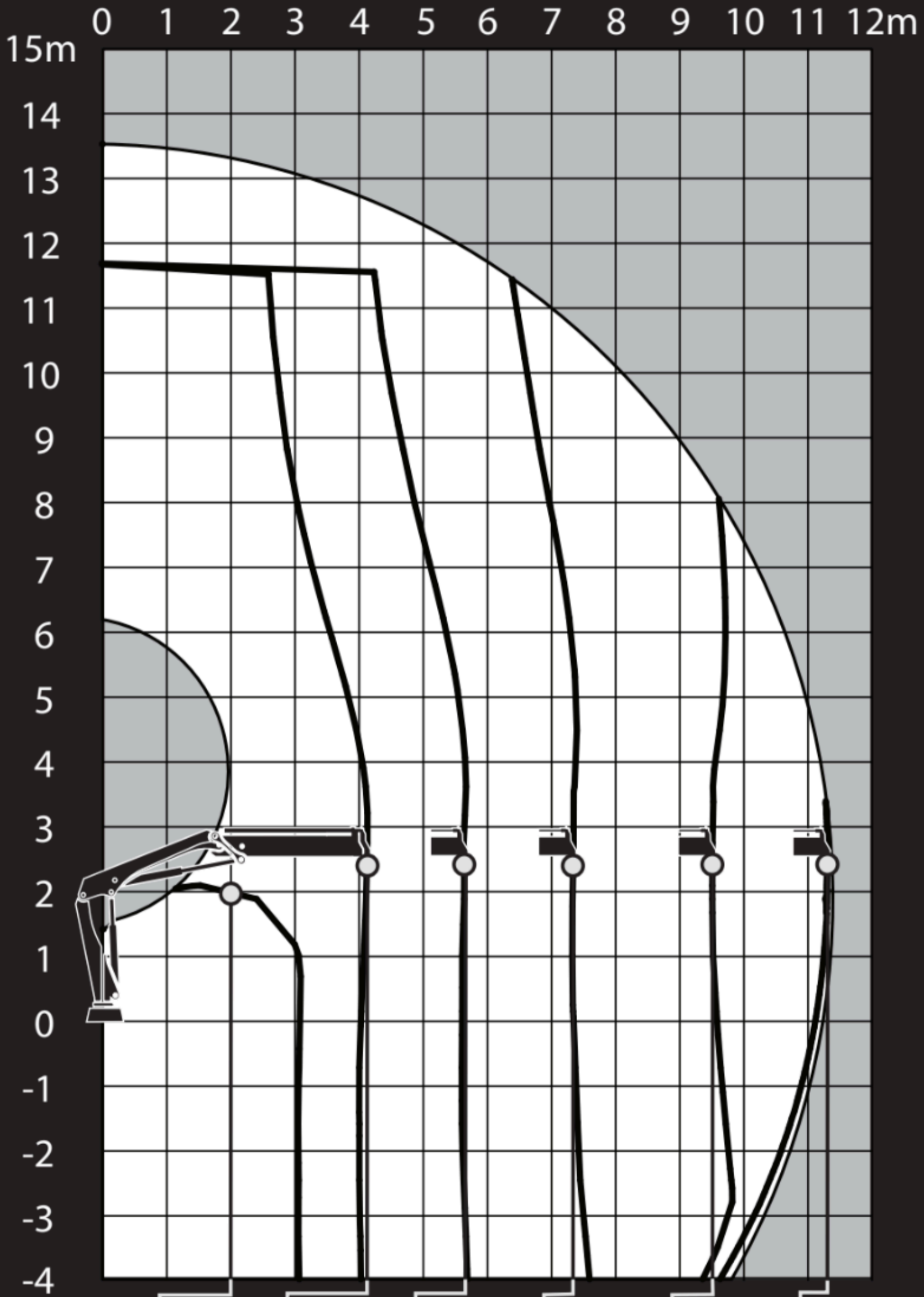
# X-HIDUO 062 D-4

Top View (Metric)



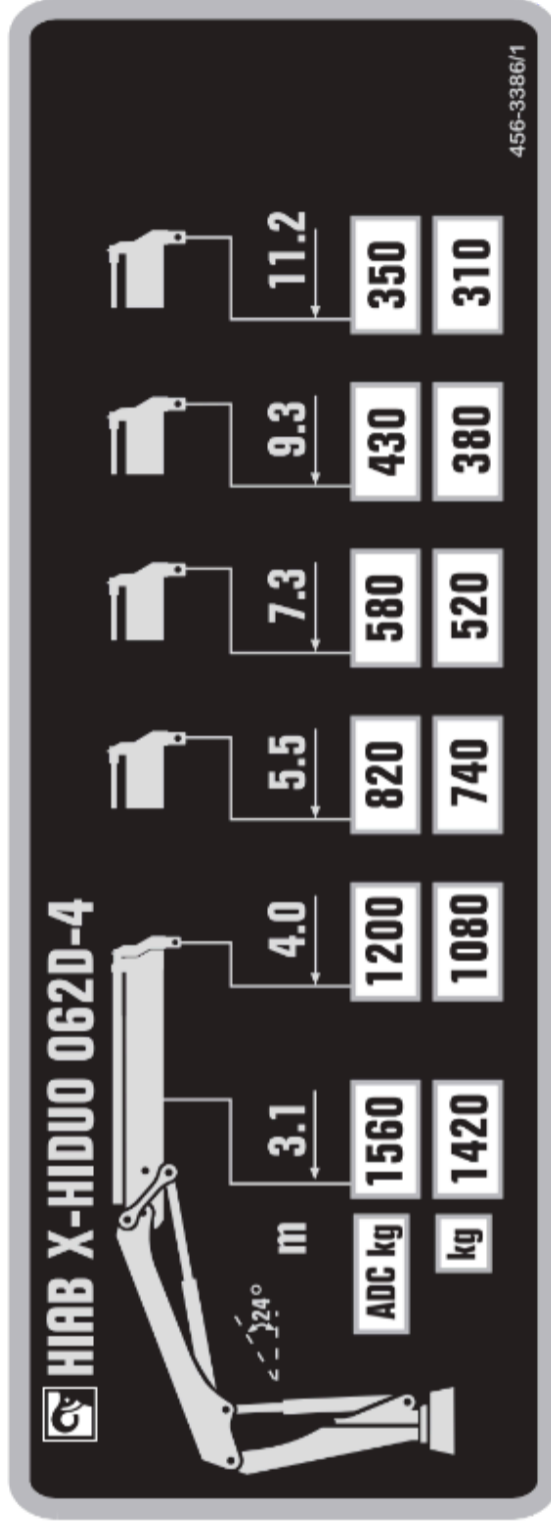


# HIAB X-HIDUO 062D-4



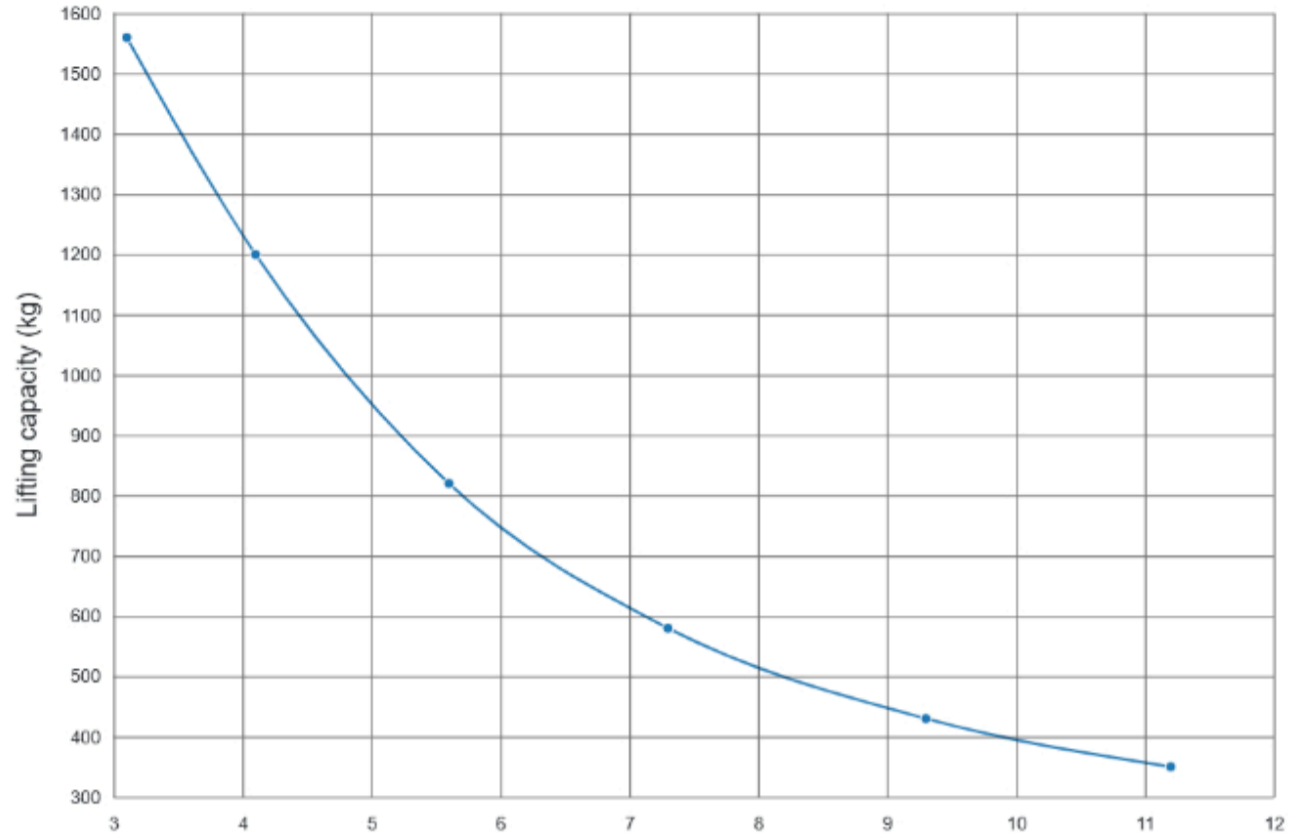
456-3387/1

<b>ADC</b>	<b>1560</b>	<b>1200</b>	<b>820</b>	<b>580</b>	<b>430</b>	<b>350</b>
<b>kg</b>	<b>1420</b>	<b>1080</b>	<b>740</b>	<b>520</b>	<b>380</b>	<b>310</b>





## X-HIDUO 062 D-4



### Outreach

Description	Unit	Value
Standard Outreach 1 (SOR1) - Standard load at std outreach with ADC 1 (SLC_ADC1)	m - kg	3.1 - 1560
Standard Outreach 2 (SOR2) - Standard load at std outreach with ADC 2 (SLC_ADC2)	m - kg	4.1 - 1200
Standard Outreach 3 (SOR3) - Standard load at std outreach with ADC 3 (SLC_ADC3)	m - kg	5.6 - 820
Standard Outreach 4 (SOR4) - Standard load at std outreach with ADC 4 (SLC_ADC4)	m - kg	7.3 - 580
Standard Outreach 5 (SOR5) - Standard load at std outreach with ADC 5 (SLC_ADC5)	m - kg	9.3 - 430
Standard Outreach 6 (SOR6) - Standard load at std outreach with ADC 6 (SLC_ADC6)	m - kg	11.2 - 350
HydOut Reach Std (HORS)	m	11.3
Hyd Boom Ext (HBE)	m	7.3

### Lifting capacity

Description	Unit	Value
Lifting Capacity (LC_ADC_kNm)	kNm	47.0
Lifting Capacity (LC_ADC_kNm)	tm	4.8

### Oil and tank

Description	Unit	Value
Rec OilFlow Lo (Flow-Lo) - Rec OilFlow Hi (Flow-Hi)	l/min - l/min	30 - 40
Work Pressure (WP)	MPa	26.0
Oil In Tank (TankVol)	l	65.0
Tank Capacity (TankCap)	l	75.0

### Slewing

Description	Unit	Value
Slewing Angle (SlewAng)	°	410
Max slope viable at full capacity (MaxAng)	°	5.0
Slewing Torque (SlewTorq)	kNm	7.7
Slewing Speed (SlewSp)	°/s	15.0
Lift Speed (LiftSp)	m/s	2.1
Max force on ground from stabiliser leg, max from all configurations (P_max)		101.3

### Dimensions

Description	Unit	Value
Height fold. (3-1)	mm	1900.0
Ref 3-2 width folded- heartcrane frame left (3-3b)	mm	1085.0
Install.space need. (4-1)	mm	725.0

### Weights

Description	Unit	Value
Weight of Crane (Weight)	kg	950.0
add weight of frame attachment (add_WHT_FA)	kg	28.0
Weight with legs (add_WHT_STAB)	kg	150.0
		<b>Total weight = 1128.0 kg</b>