



X-DUO 058 D-4

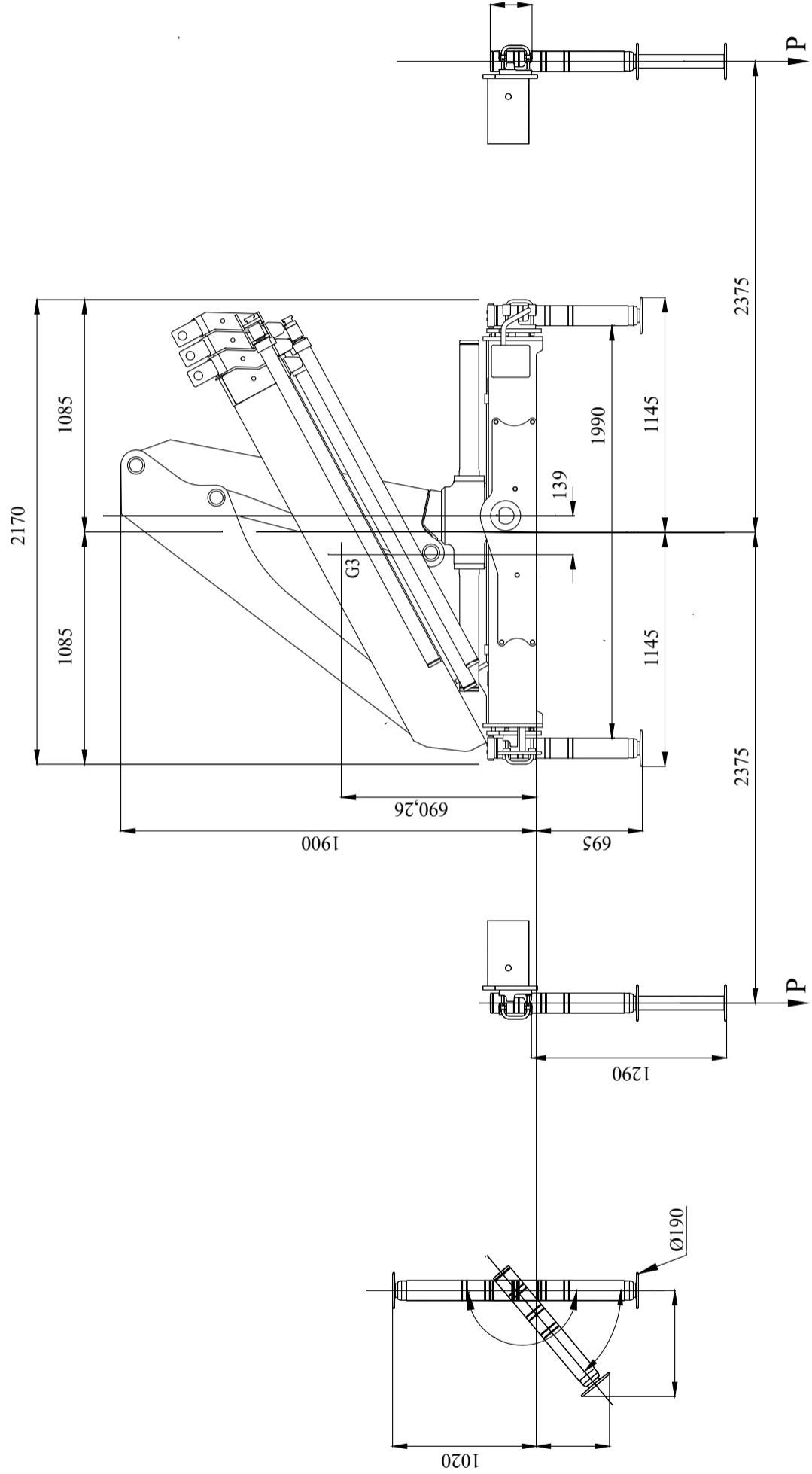
Top functions at a reasonable price point for this HIAB range of loader cranes. Manually controlled loader crane. CE marked. A non CE version is also available. 5 Tm range capacity loader crane.

The HIAB X-DUO 058 light segment crane is built to last. The manually driven advanced Duo control system gives you a wide range of options, making safety and practicality the heart of what it can offer for doing an easy job. The optimized and sleek design adds to the many functions you can choose among: for example, the optional semi automatic motion. The crane's outreach from 5,3m to 11,3m gives you the needed flexibility for carrying out jobs day after day, as a reliable partner. The industry leading two years warranty coverage matched to the three years for steel parts assure a continuous working life of the crane. The special nDurance paint protection finish further contributes to making the crane look and last longer.

Lifting capacity	310 - 1420 kg
Outreach	11 m
Weight	1128 kg

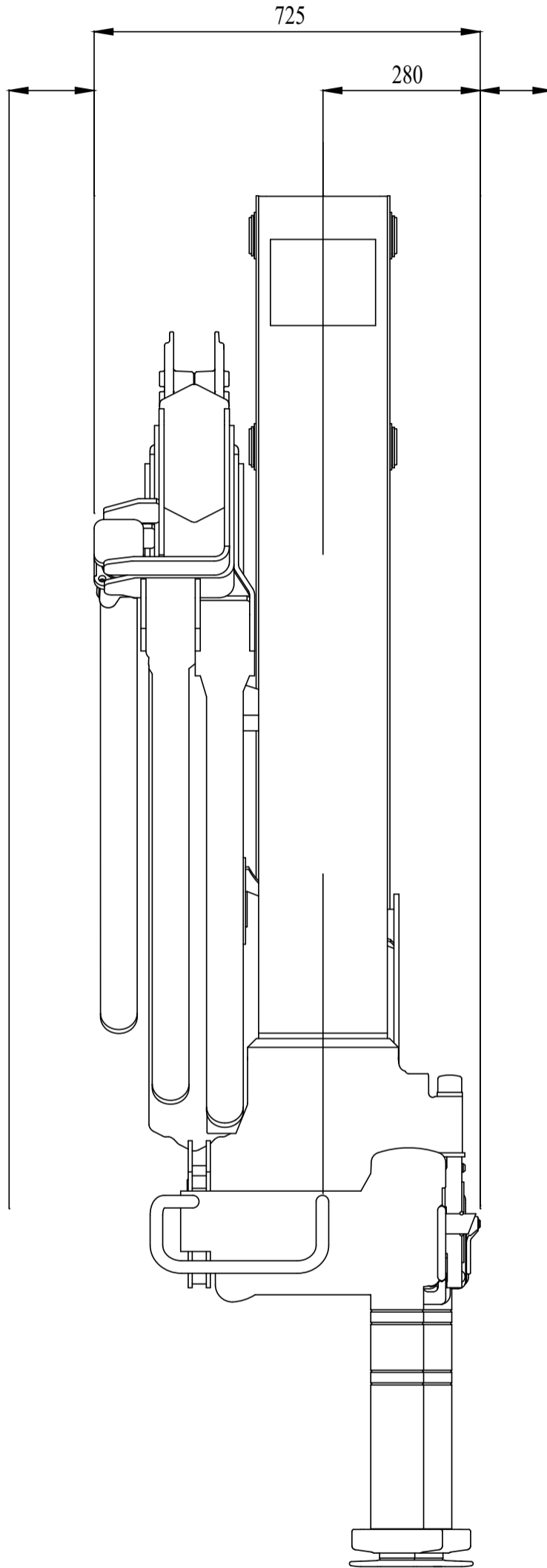
X-DUO 058 D-4

Front View Folded (Metric)



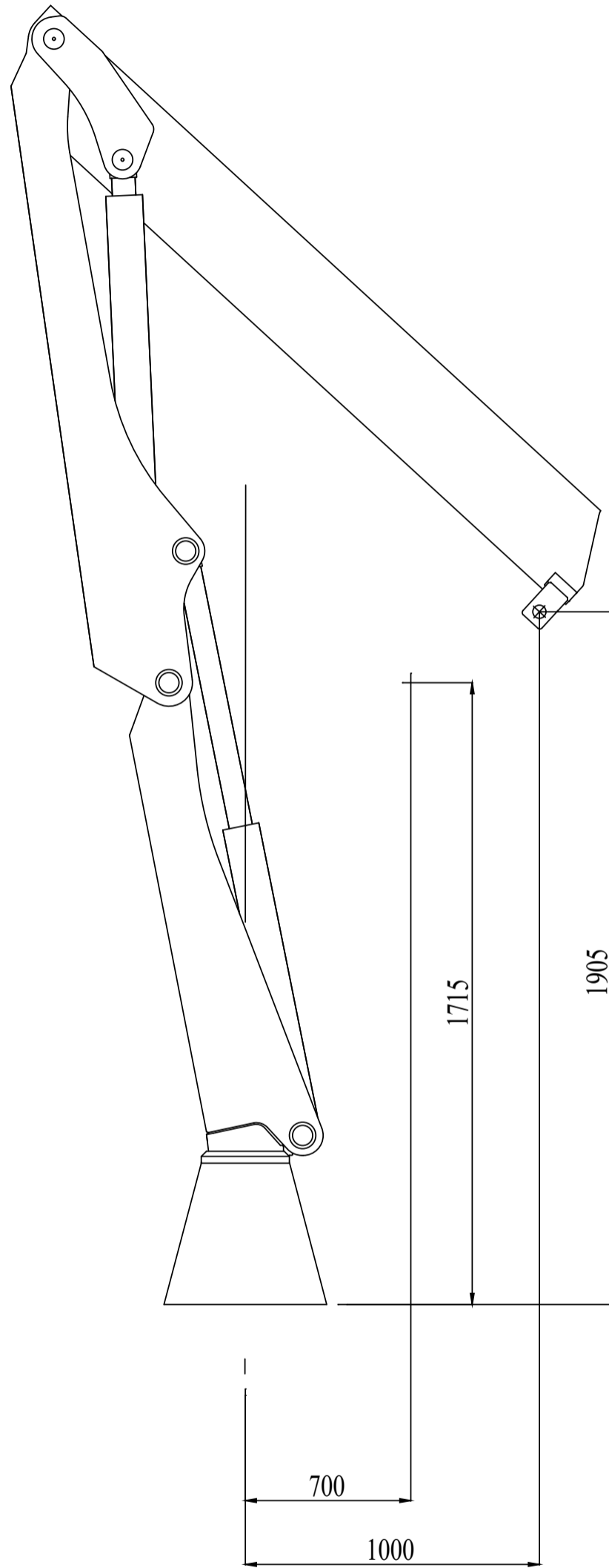
X-DUO 058 D-4

Side View Folded (Metric)



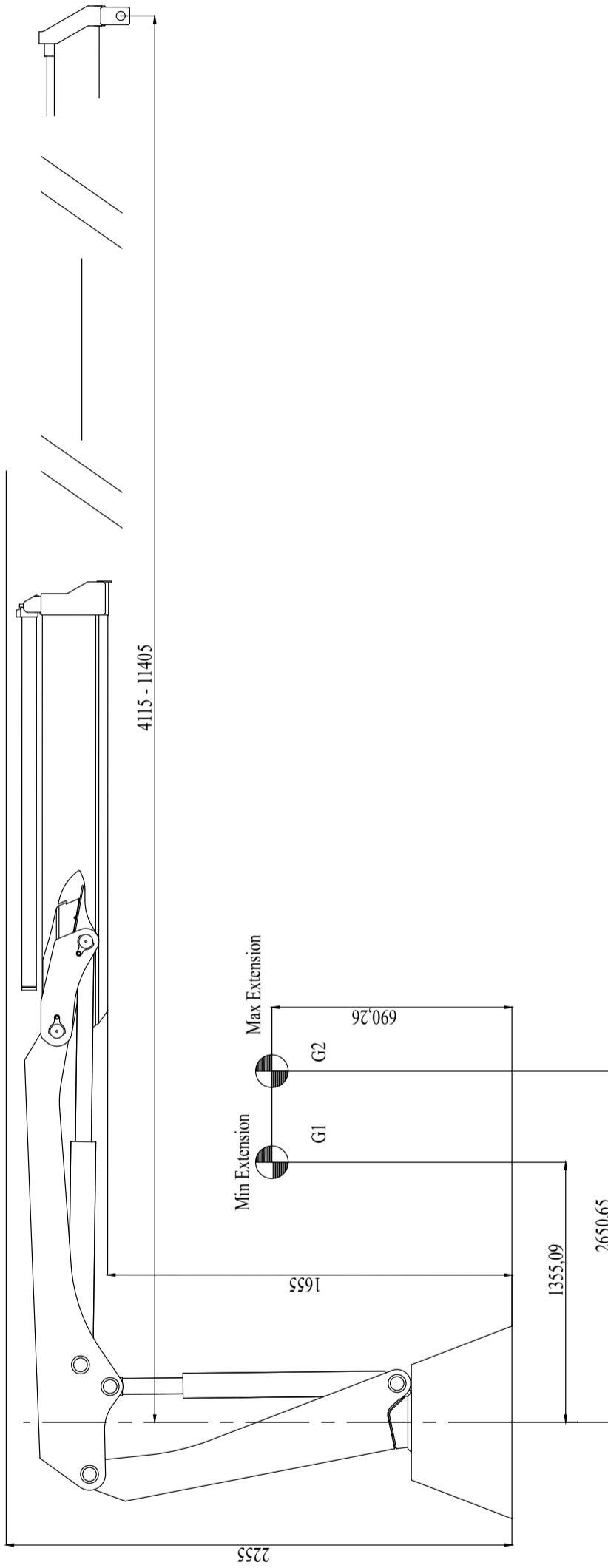
X-DUO 058 D-4

Side View Unfolded Close In Area (Metric)



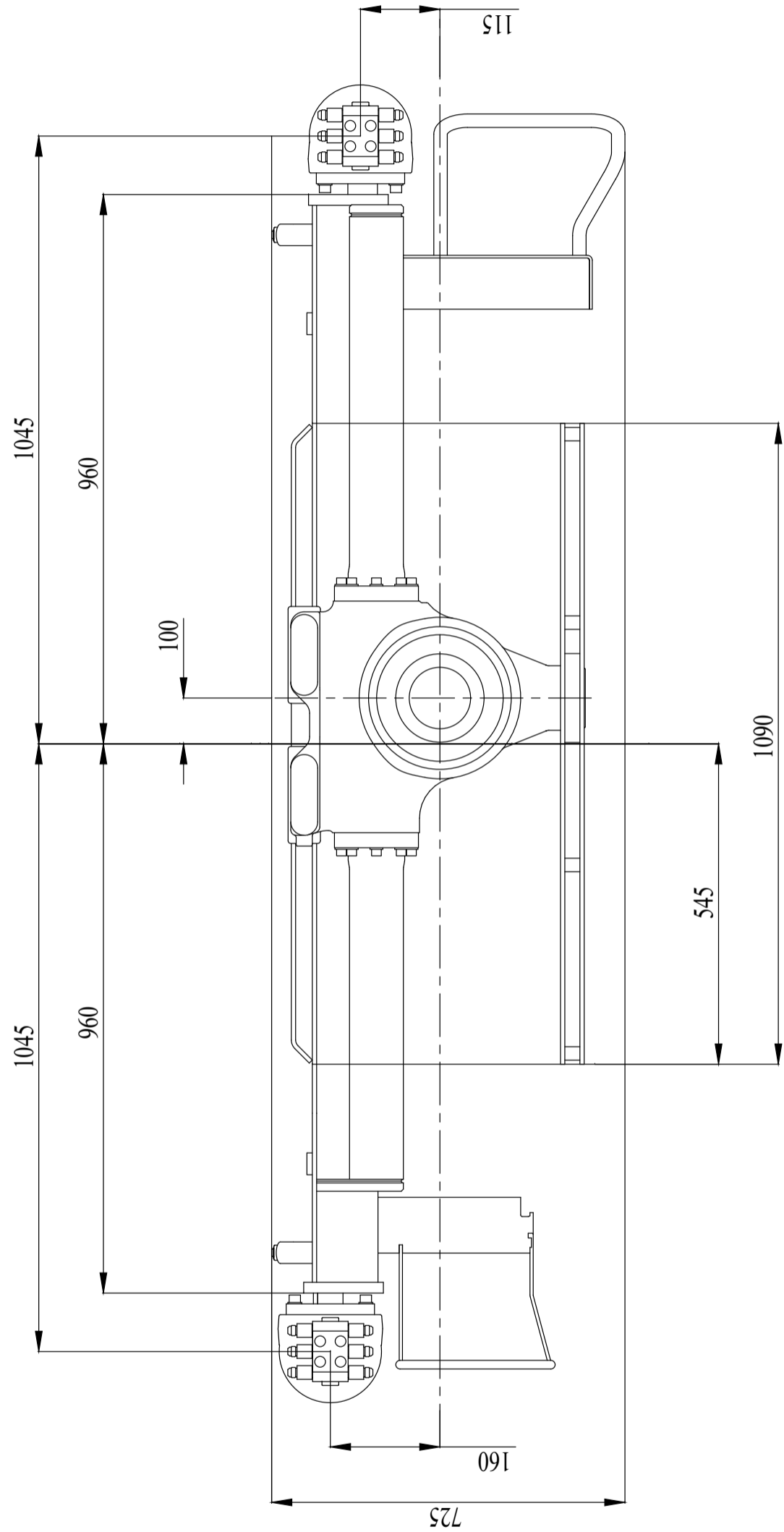
X-DUO 058 D-4

Side View Unfolded Stretched (Metric)



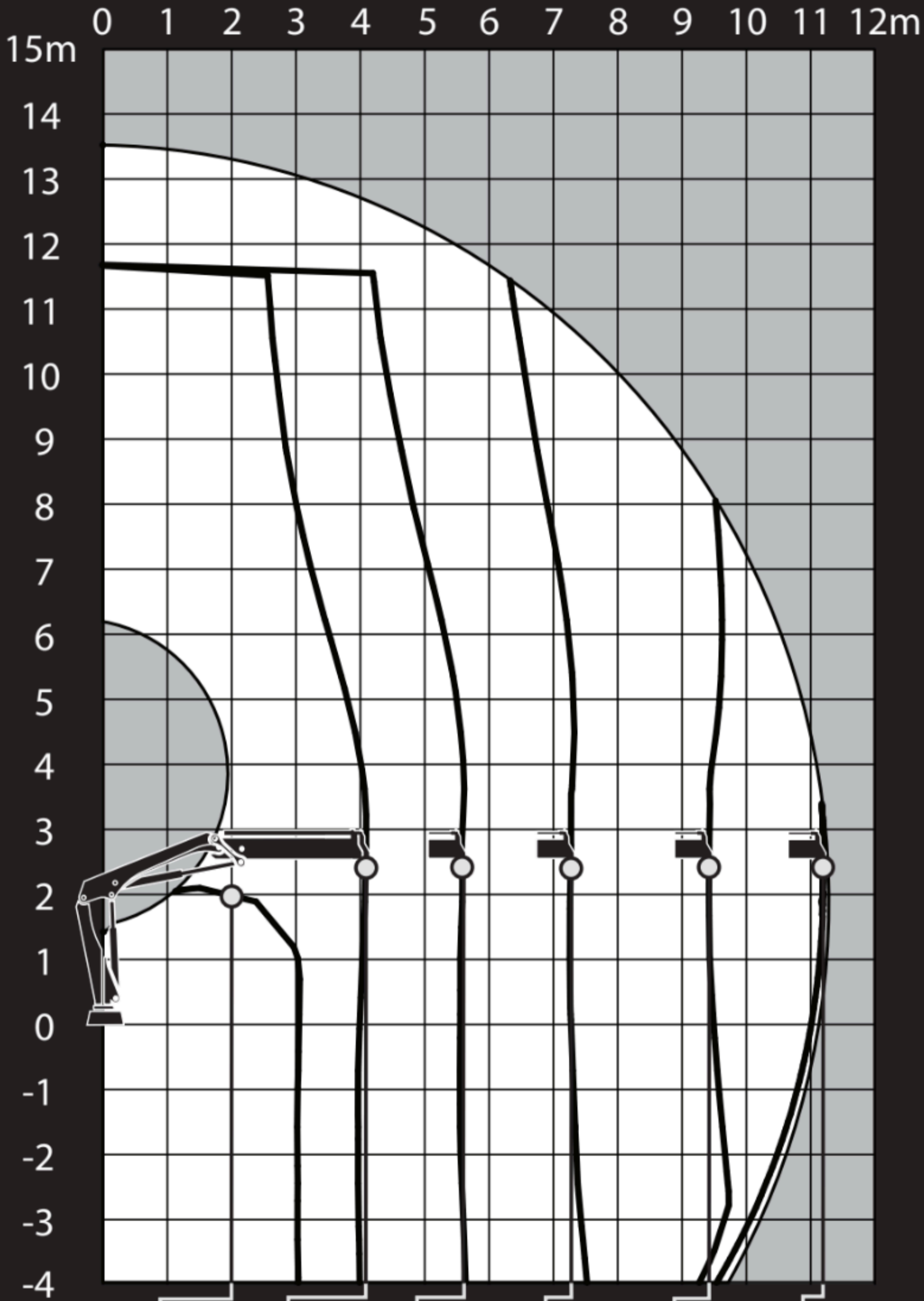
X-DUO 058 D-4

Top View (Metric)



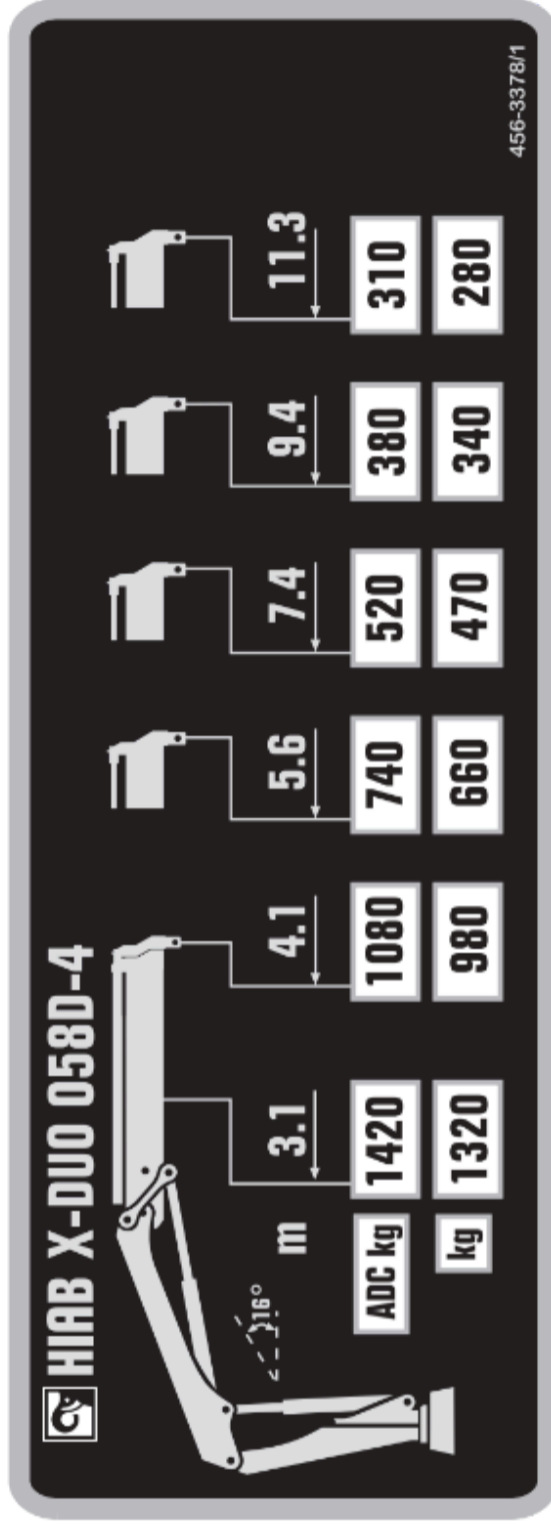


HIAB X-DUO 058D-4

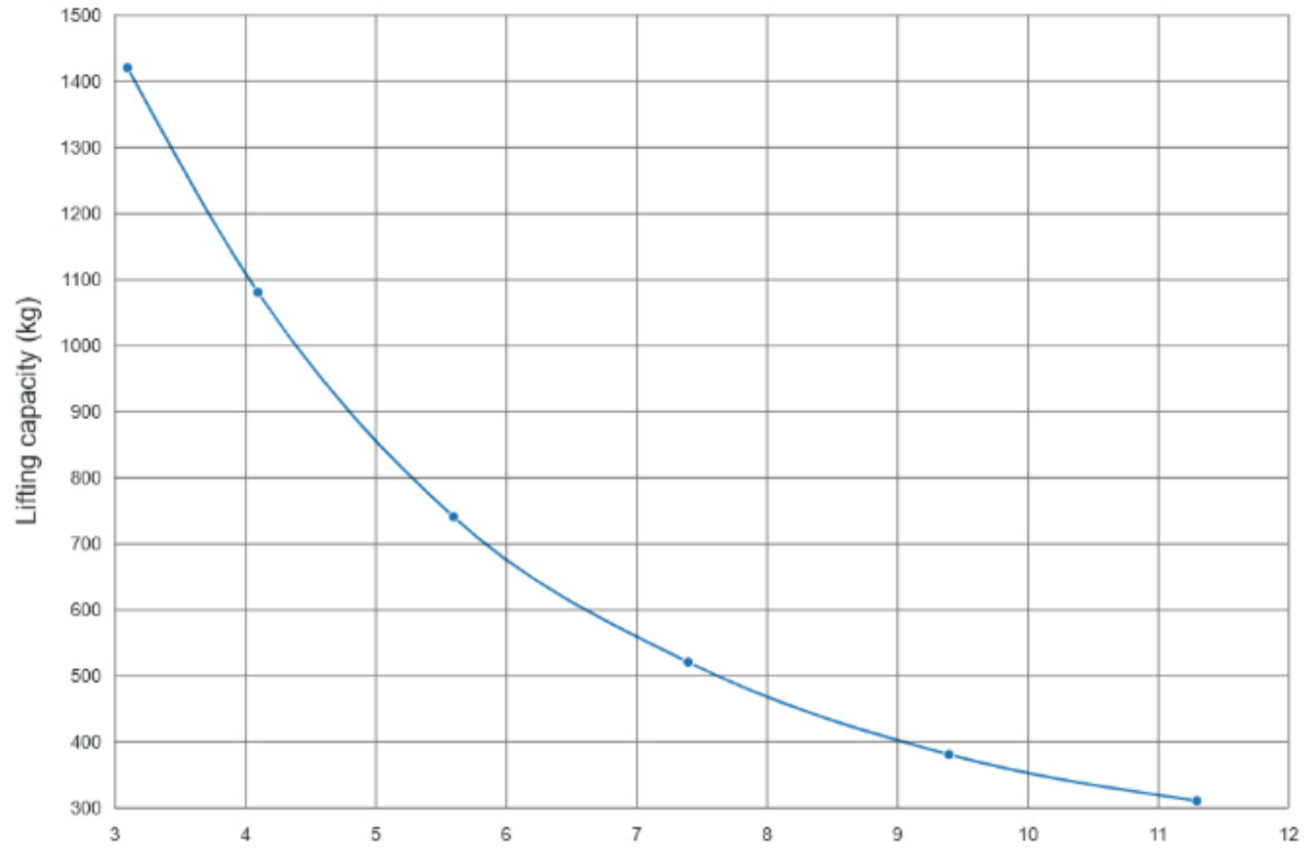


456-3379/1

ADC	1420	1080	740	520	380	310
kg	1320	980	660	470	340	280



X-DUO 058 D-4



Outreach

Description	Unit	Value
Standard Outreach 1 (SOR1) - Standard load at std outreach with ADC 1 (SLC_ADC1)	m - kg	3.1 - 1420
Standard Outreach 2 (SOR2) - Standard load at std outreach with ADC 2 (SLC_ADC2)	m - kg	4.1 - 1080
Standard Outreach 3 (SOR3) - Standard load at std outreach with ADC 3 (SLC_ADC3)	m - kg	5.6 - 740
Standard Outreach 4 (SOR4) - Standard load at std outreach with ADC 4 (SLC_ADC4)	m - kg	7.4 - 520
Standard Outreach 5 (SOR5) - Standard load at std outreach with ADC 5 (SLC_ADC5)	m - kg	9.4 - 380
Standard Outreach 6 (SOR6) - Standard load at std outreach with ADC 6 (SLC_ADC6)	m - kg	11.3 - 310
HydOut Reach Std (HORS)	m	11.3
Hyd Boom Ext (HBE)	m	7.3

Lifting capacity

Description	Unit	Value
Lifting Capacity (LC_ADC_kNm)	kNm	43.0
Lifting Capacity (LC_ADC_kNm)	tm	4.4

Oil and tank

Description	Unit	Value
Rec OilFlow Lo (Flow-Lo) - Rec OilFlow Hi (Flow-Hi)	l/min - l/min	25 - 30
Work Pressure (WP)	MPa	24.0
Oil In Tank (TankVol)	l	65.0
Tank Capacity (TankCap)	l	75.0

Slewing

Description	Unit	Value
Slewing Angle (SlewAng)	°	410
Max slope viable at full capacity (MaxAng)	°	5.0
Slewing Torque (SlewTorq)	kNm	7.7
Slewing Speed (SlewSp)	°/s	15.0
Lift Speed (LiftSp)	m/s	2.1

Dimensions

Description	Unit	Value
Height fold. (3-1)	mm	1900.0
Ref 3-2 width folded- heartcrane frame left (3-3b)	mm	1085.0
Install.space need. (4-1)	mm	725.0

Weights

Description	Unit	Value
Weight of Crane (Weight)	kg	950.0
add weight of frame attachment (add_WHT_FA)	kg	28.0
Weight with legs (add_WHT_STAB)	kg	150.0
		Total weight = 1128.0 kg