



X-DUO 044 D-4

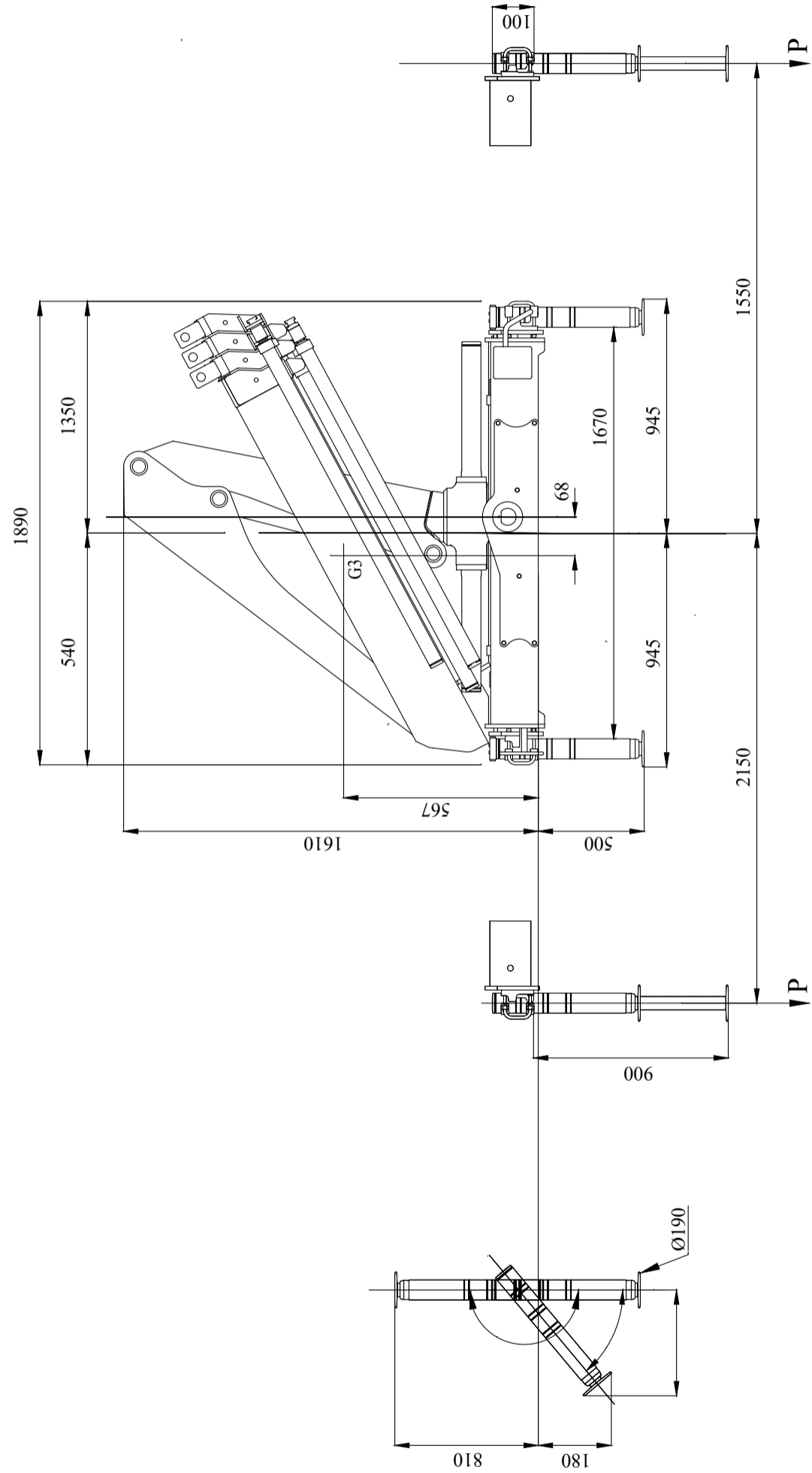
Top functions at a reasonable price point for this HIAB range of loader cranes. Manually controlled loader crane. Non CE marked. 4 Tm range capacity loader crane.

The HIAB X-DUO 044 light segment crane is built to last. The manually driven advanced Duo control system gives you a wide range of options, making safety and practicality the heart of what it can offer for doing an easy job. The optimized and sleek design adds to the many functions you can choose among: for example, the optional semi automatic motion. The crane's outreach from 4,8m to 9,4m gives you the needed flexibility for carrying out jobs day after day, as a reliable partner. The industry leading two years warranty coverage matched to the three years for steel parts assure a continuous working life of the crane. The special nDurance paint protection finish further contributes to making the crane look and last longer.

Lifting capacity	330 - 1360 kg
Outreach	9 m
Weight	598 kg

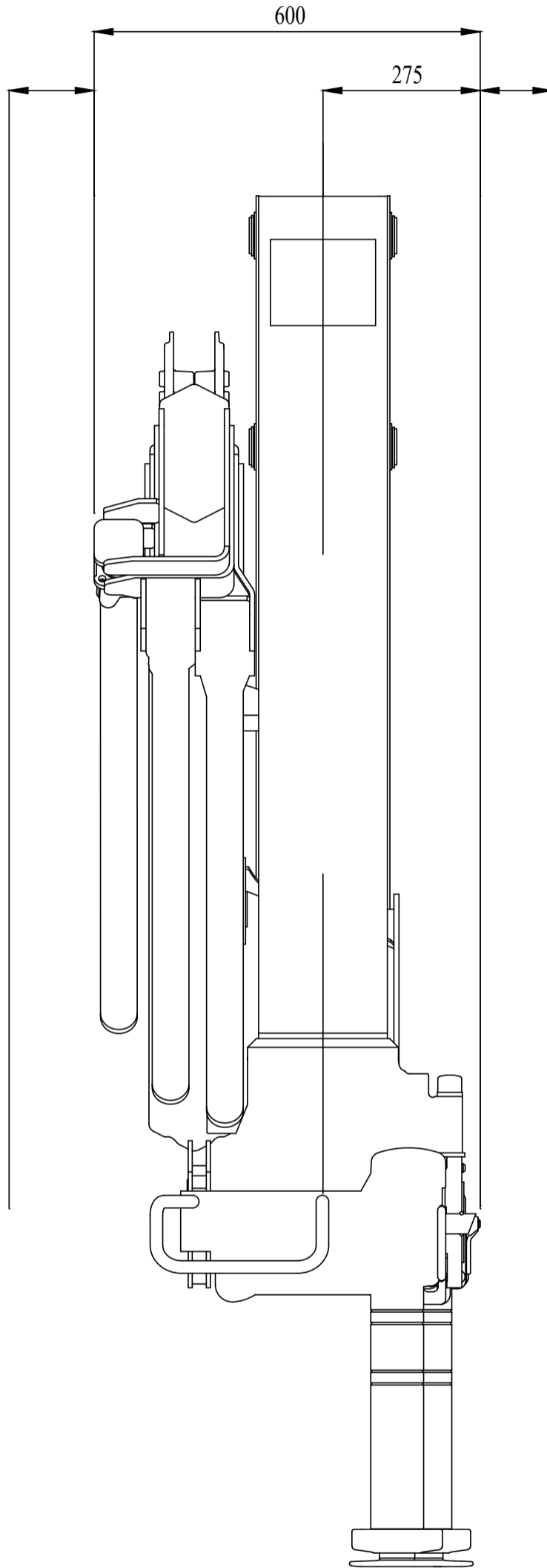
X-DUO 044 D-4

Front View Folded (Metric)



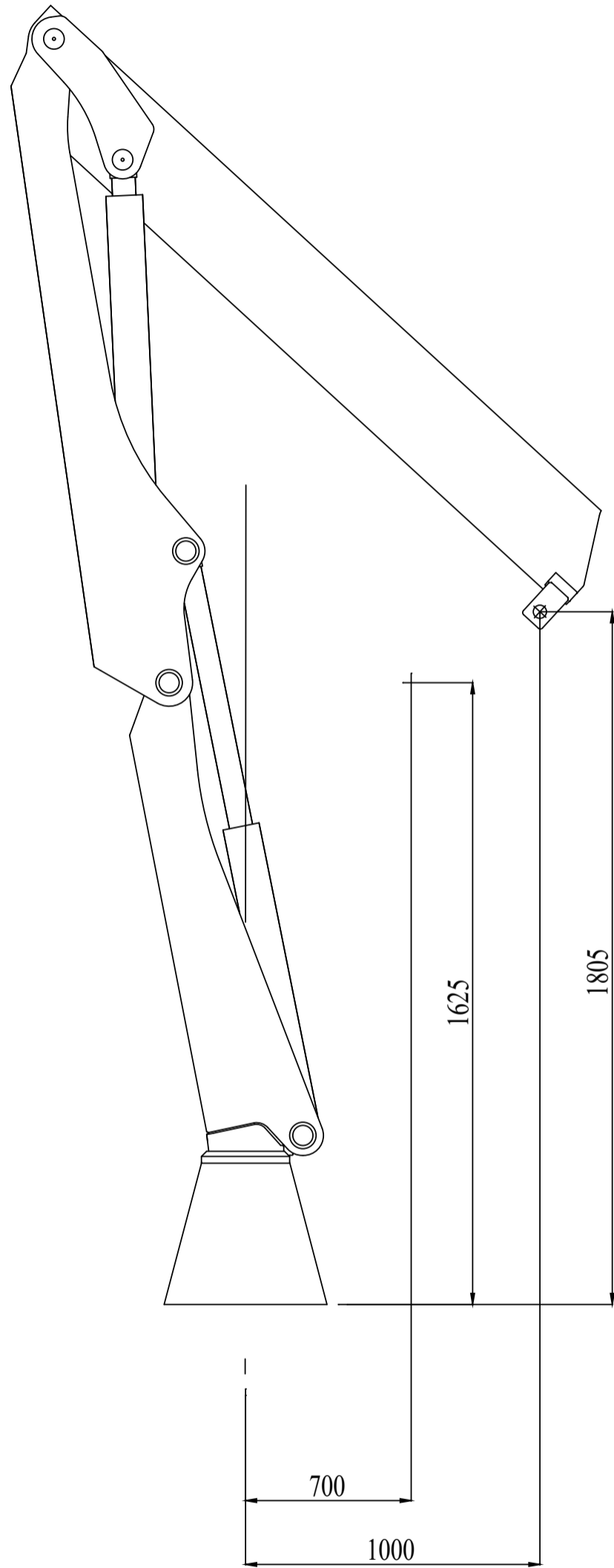
X-DUO 044 D-4

Side View Folded (Metric)



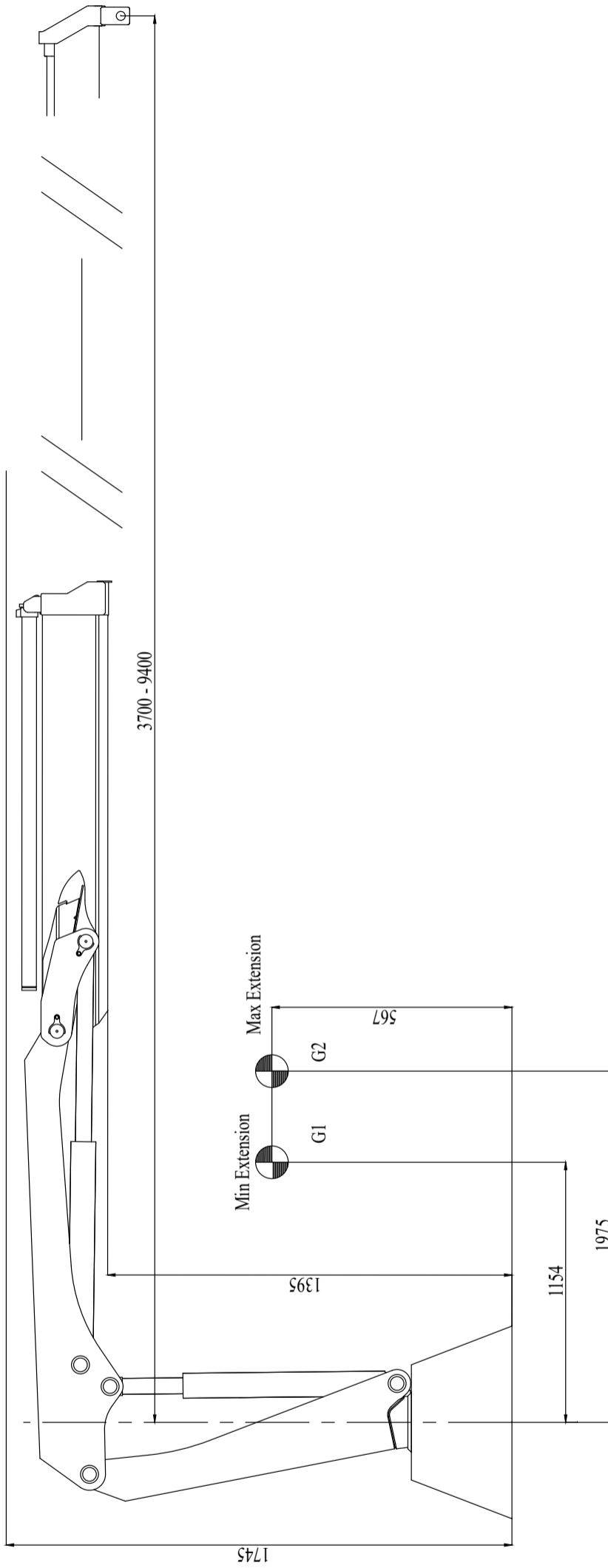
X-DUO 044 D-4

Side View Unfolded Close In Area (Metric)



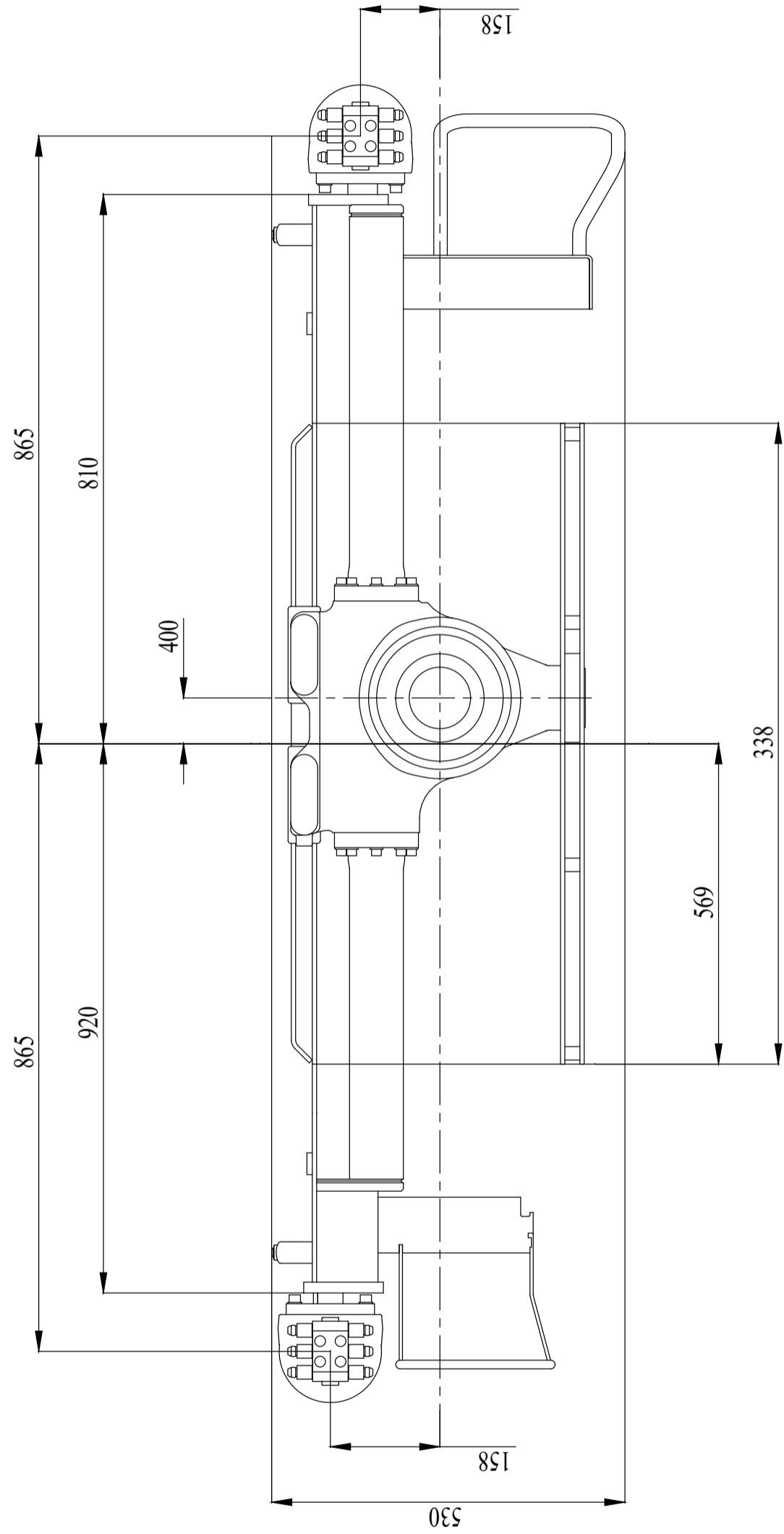
X-DUO 044 D-4

Side View Unfolded Stretched (Metric)



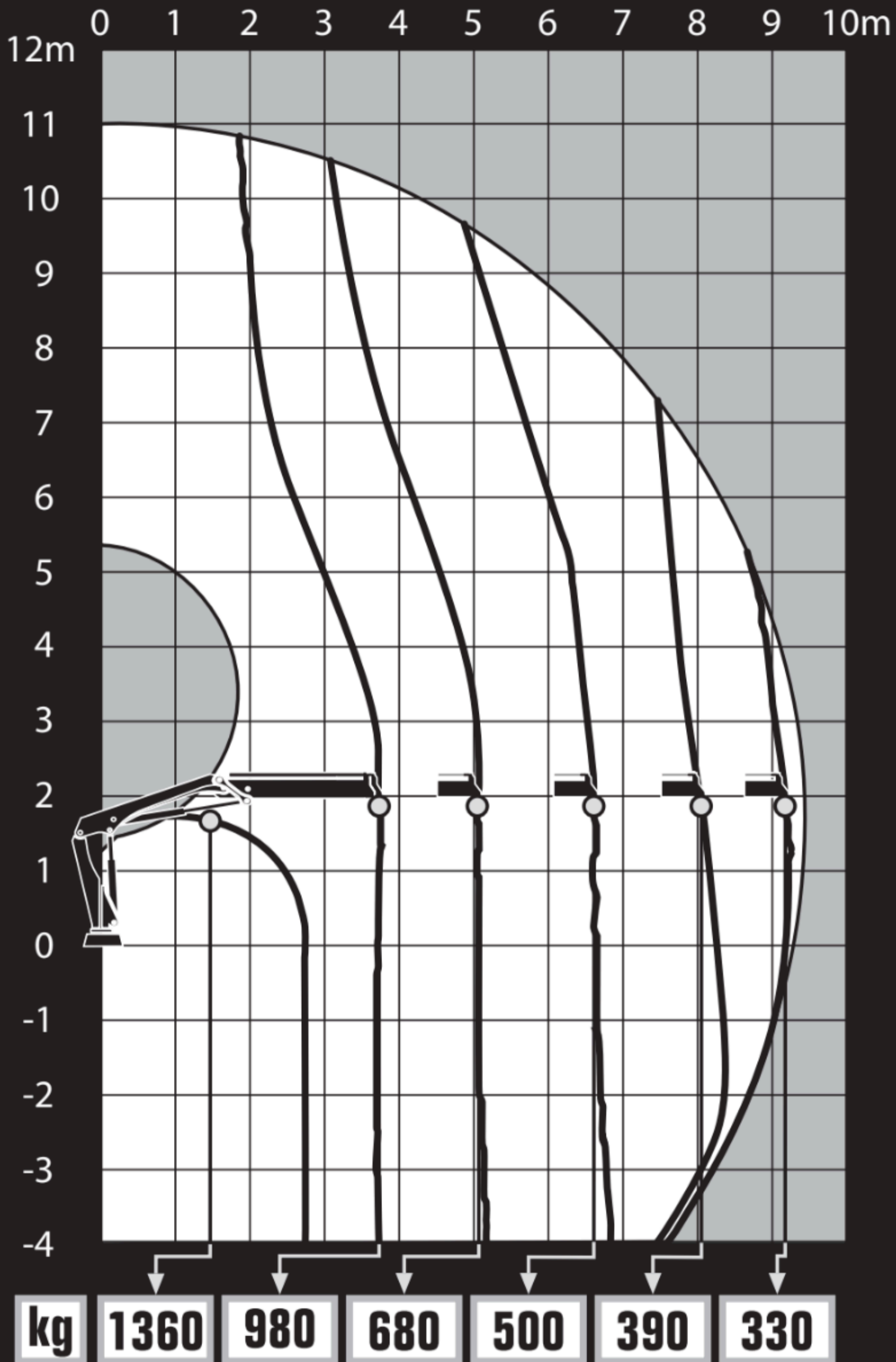
X-DUO 044 D-4

Top View (Metric)

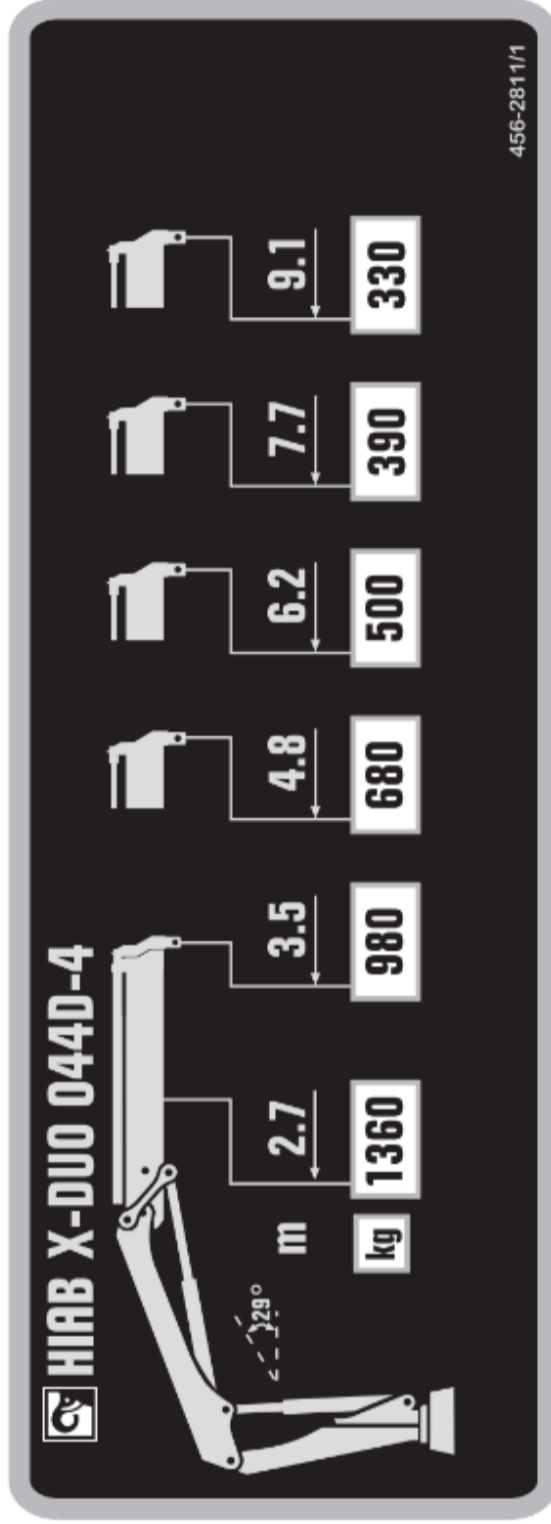




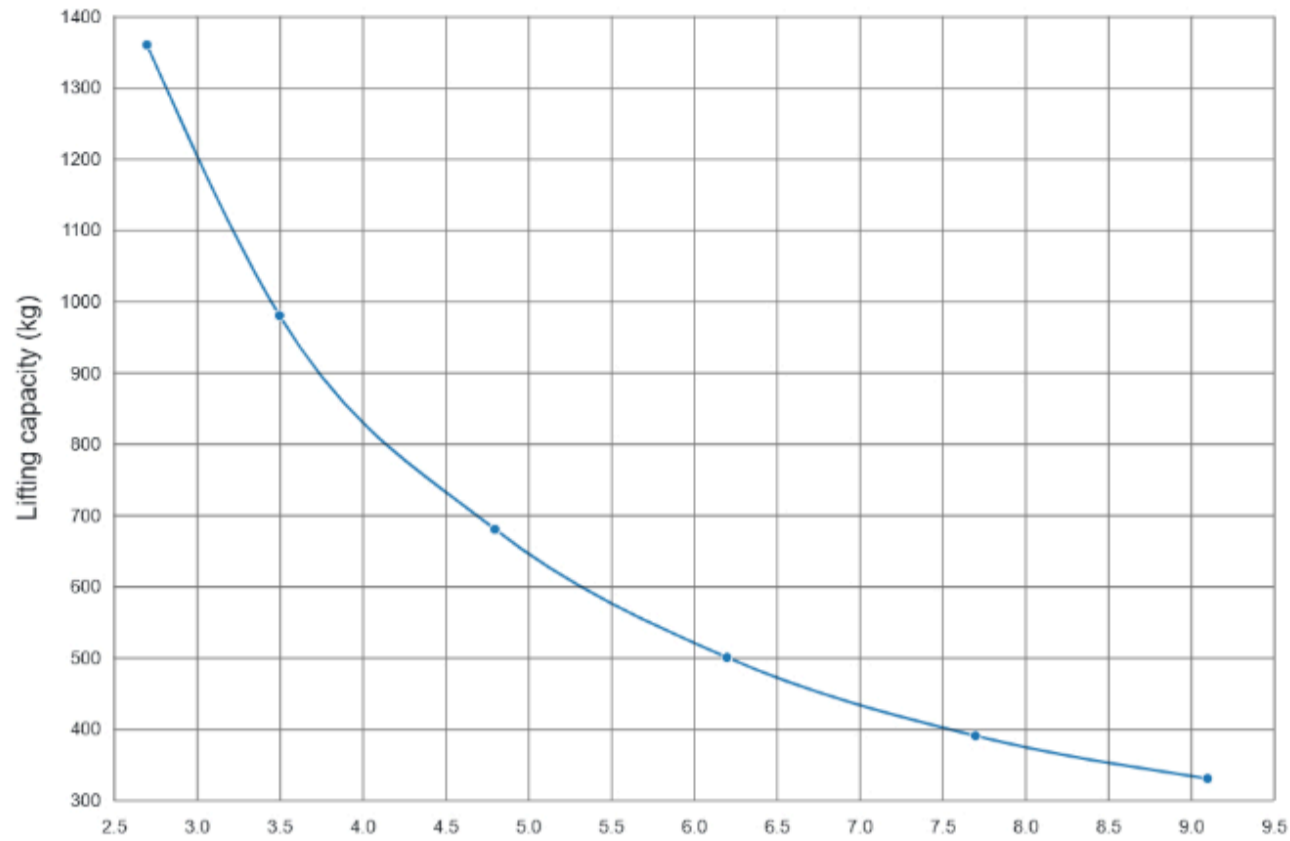
HIAB X-DUO 044D-4



456-2812/1



X-DUO 044 D-4



Outreach

Description	Unit	Value
Standard Outreach 1 (SOR1) - Standard load at std outreach 1 (SLC1)	m - kg	2.7 - 1360
Standard Outreach 2 (SOR2) - Standard load at std outreach 2 (SLC2)	m - kg	3.5 - 980
Standard Outreach 3 (SOR3) - Standard load at std outreach 3 (SLC3)	m - kg	4.8 - 680
Standard Outreach 4 (SOR4) - Standard load at std outreach 4 (SLC4)	m - kg	6.2 - 500
Standard Outreach 5 (SOR5) - Standard load at std outreach 5 (SLC5)	m - kg	7.7 - 390
Standard Outreach 6 (SOR6) - Standard load at std outreach 6 (SLC6)	m - kg	9.1 - 330
HydOut Reach Std (HORS)	m	9.4
Hyd Boom Ext (HBE)	m	5.7

Lifting capacity

Description	Unit	Value
Max Dynamic Moment (Mdyn)	kNm	48.0
Lifting Capacity (LC_kNm)	kNm	36.1
Lifting Capacity (LC_kNm)	tm	3.7
Stress calculation moment (Mstat)	kNm	63.0

Oil and tank

Description	Unit	Value
Rec OilFlow Lo (Flow-Lo) - Rec OilFlow Hi (Flow-Hi)	l/min - l/min	10 - 15
Work Pressure (WP)	MPa	24.0
Oil In Tank (TankVol)	l	19.0
Tank Capacity (TankCap)	l	24.0

Slewing

Description	Unit	Value
Slewing Angle (SlewAng)	°	380
Max slope viable at full capacity (MaxAng)	°	5.0
Slewing Torque (SlewTorq)	kNm	4.8
Slewing Speed (SlewSp)	°/s	15.0
Lift Speed (LiftSp)	m/s	0.8

Dimensions

Description	Unit	Value
Height fold. (3-1)	mm	1610.0
Ref 3-2 width folded- heartcrane frame left (3-3b)	mm	1350.0
Install.space need. (4-1)	mm	600.0

Weights

Description	Unit	Value
Weight of Crane (Weight)	kg	575.0
add weight of frame attachment (add_WHT_FA)	kg	23.0

Total weight = 598.0 kg