

NX
SERIES

 **MOFFETT**



THE NEW MOFFETT M4 NX V BUILT FOR THE FUTURE

PRODUCT BROCHURE

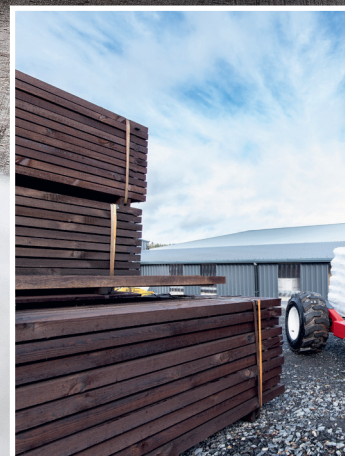
UNLEASH MAXIMUM LOGISTICS EFFICIENCY WITH THE MOFFETT M4 NX V



Always compliant **with MOFFETT**

All MOFFETT truck mounted forklifts are Stage V compliant.

▼ The products shown here in this brochure are part of Hiab's global product selection. Deviations of the selection due to geographical location may occur. Please contact your local Hiab dealer for further details on available models, accessories and options.



EFFICIENCY

Get ready to experience the ultimate logistics game-changer – the MOFFETT truck mounted forklift, now even better with the new generation MOFFETT M4 NX V.

This machine is a true workhorse designed to deliver goods in the toughest conditions. And with more power, safety, and convenience than ever, it's the perfect solution for modern logistics.

Underneath its sleek exterior, the MOFFETT M4 NX V is packed with cutting-edge technology, including a fuel-efficient and emissions-compliant KOHLER engine that delivers massive torque, allowing for a lift capacity of up to 2,500 kg in a compact frame. And with its inbuilt connectivity, top-of-the-line display, and advanced smart features, the MOFFETT M4 NX V provides valuable real-time feedback to enhance driver and load safety.

Maintaining your MOFFETT M4 NX V is easy, allowing it to spend more time at work and make more deliveries for you. Upgrade your goods delivery system with the MOFFETT M4 NX V and experience unrivaled efficiency and productivity.

Discover more moffett.hiab.com





THE BEST **JUST GOT BETTER**

Elevate your logistics game with the new MOFFETT M4 NX v. Featuring a range of upgrades, including advanced engines, telematics, and a new display screen; this machine provides exceptional value to maximize your performance.

With a focus on safety and user-friendly control systems, the MOFFETT M4 NX v sets the standard in logistics technology, taking your business beyond expectations. Experience precise offloading with minimized damage to cargo, all while optimizing your working day with speed and safety.

The perfect drive

Discover the ultimate in driving power with the MOFFETT M4 NX V. Equipped with a robust 1.4-liter KOHLER diesel engine and all-wheel drive; this machine can handle even the most challenging terrain with ease. The advanced engine provides outstanding low-end torque, allowing operators to run the MOFFETT at lower RPMs to save on fuel costs while still delivering enough power to lift up to 2,500 kg. With the MOFFETT M4 NX V, you can expect nothing less than a perfect drive, no matter where your work takes you.

“The MOFFETT M4 NX V offers a totally new driving experience. It's a true pleasure to operate, making my working day much smoother.”

MOFFETT operator, UK

Integrated intelligence

Stay in complete control with the MOFFETT M4 NX V – featuring Hiab HiConnect™ and advanced telematics built right into the control system of the forklift. The system provides real-time data on machine location, inclines, driver behavior, and cargo weight distribution, allowing you to easily monitor the vehicle's status and ensure your operators' safety.

With cloud notification and diagnostic capabilities, you'll receive alerts for timely maintenance and gain valuable insights into vehicle utilization for improved productivity. You will also get real-time warnings for potential hazards, such as a dangerous roll angle. The MOFFETT M4 NX V is a reliable partner that helps you work smarter, not harder.

New display screen – all info at a glance

The MOFFETT M4 NX V prioritizes operator comfort and convenience. Equipped with an ergonomic design, it ensures operators stay comfortable even during extended periods of operation. The multifunctional color screen is a standout feature that provides the operator with all the relevant information they need at a glance, including engine RPM, lifting height, inclination, and fuel level.

One of the most impressive safety features of the MOFFETT M4 NX V is the immediate visual warning provided when the driver approaches a dangerous roll angle. This warning allows the driver to quickly take corrective action, ensuring safe and efficient handling of the machine. With the main operating parameters easily visible at all times, operators can make informed decisions and stay in control of the machine.



“With just one look on the screen, I know exactly everything I need to know to feel in control.”

MOFFETT operator, Germany



NEW FEATURES FOR BETTER PERFORMANCE SAFETY AND COMFORT

TorqueMax™

Outstanding engine performance

The M4 NX v model boasts an innovative Kohler Small Displacement (KSD) engine engineered to deliver optimal performance across various operating conditions. With impressive low-end torque, operators can effectively run their machines at lower RPMs, resulting in significant fuel savings.



Mast

High Visibility mast for precise load positioning with numerous options to suit your application

Interlocking seatbelt

Prevents driving if not connected

Redesigned chassis

Optimised weight distribution



Reduced cost of ownership™

Savings on all sides

The M4 NX models now provide reduced cost of ownership. You get faster and quieter operations, reduced fuel consumption and lower carbon dioxide emissions.



EasyService™

Reduced maintenance time

The MOFFETT M4 NX has a redesigned bonnet and rear doors, access to do daily checks and routine maintenance is made even easier.



ANCE,



SafetyPlus™ Because safety comes first

The M4 nx v is equipped with a range of advanced safety features that provide reliable protection for the operator. If the machine approaches a dangerous roll angle or becomes at risk of overloading or tipping over, the operator will receive a prompt warning signal to alert them to the potential danger. With this early warning, the operator can take swift corrective action to maintain a safe working environment*.



MaxPerformance™ Light, but far from lightweight



Europe's most trusted truck mounted forklift now has even more versatile performance. With the most efficient power-to-weight ratio in the industry.



This is an additional drivers assist. Coming soon.



Ground-Start™ Enhancing safety

With GroundStart as standard, dismantling the M4 nx is now even easier for the operator no matter the location.



EXPERIENCE THE NEXT LEVEL OF ENVI

The Kohler KSD has a powerful engine with a capacity of 18.4kW/24.7hp – just below the 19kW threshold required for a DPF (Diesel Particulate Filter). As a result, the machine does not require a DPF, which makes it more cost-effective to operate. Additionally, the engine provides a high torque of 90Nm (66ft-lbs) at an RPM of 1800, which results in improved traction, climbing ability, reduced noise levels, and lower fuel consumption.

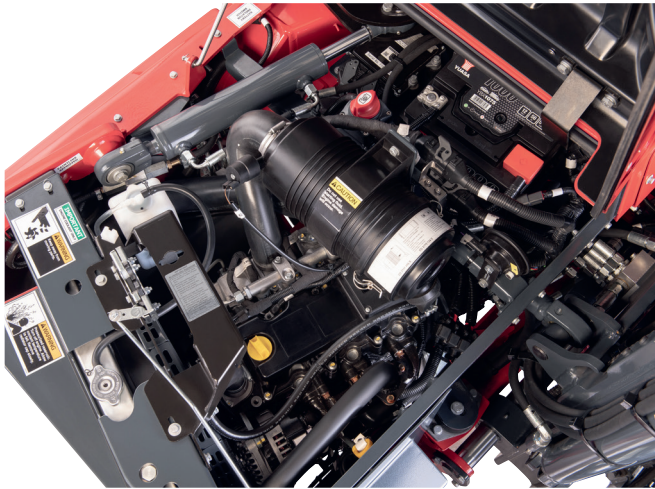
State-of-the-art injection system

The KOHLER KSD introduces innovative technology to the industry. Its cutting-edge architecture features an indirect injection system managed electronically, similar to a direct injection engine.

This unique combination allows maximum engine performance in any operating condition and environment,

resulting in exceptional engine response and optimized efficiency. The engine's impressive low-end torque values enable operators to run their equipment at lower RPM, reducing fuel consumption without compromising performance.

The electronic injection system ensures that the machine produces no visible black smoke, making it an environmentally friendly option. The KOHLER KSD's advanced architecture also minimizes noise and vibrations during operation, providing operators with a more comfortable working environment.



Engine performance

Quick specifications	KSD 1403TC
Cylinders / FIE	3 / Common rail
Max power kW (HP) @ rpm	18.4 (24.7) @ 3000 US Tier 4 Final 18.9 (25.7) @ 3000 Stage V
Max torque Nmm @ rpm	90 @ 1800
Emission compliance	US Tier 4 Final / EU Stage V

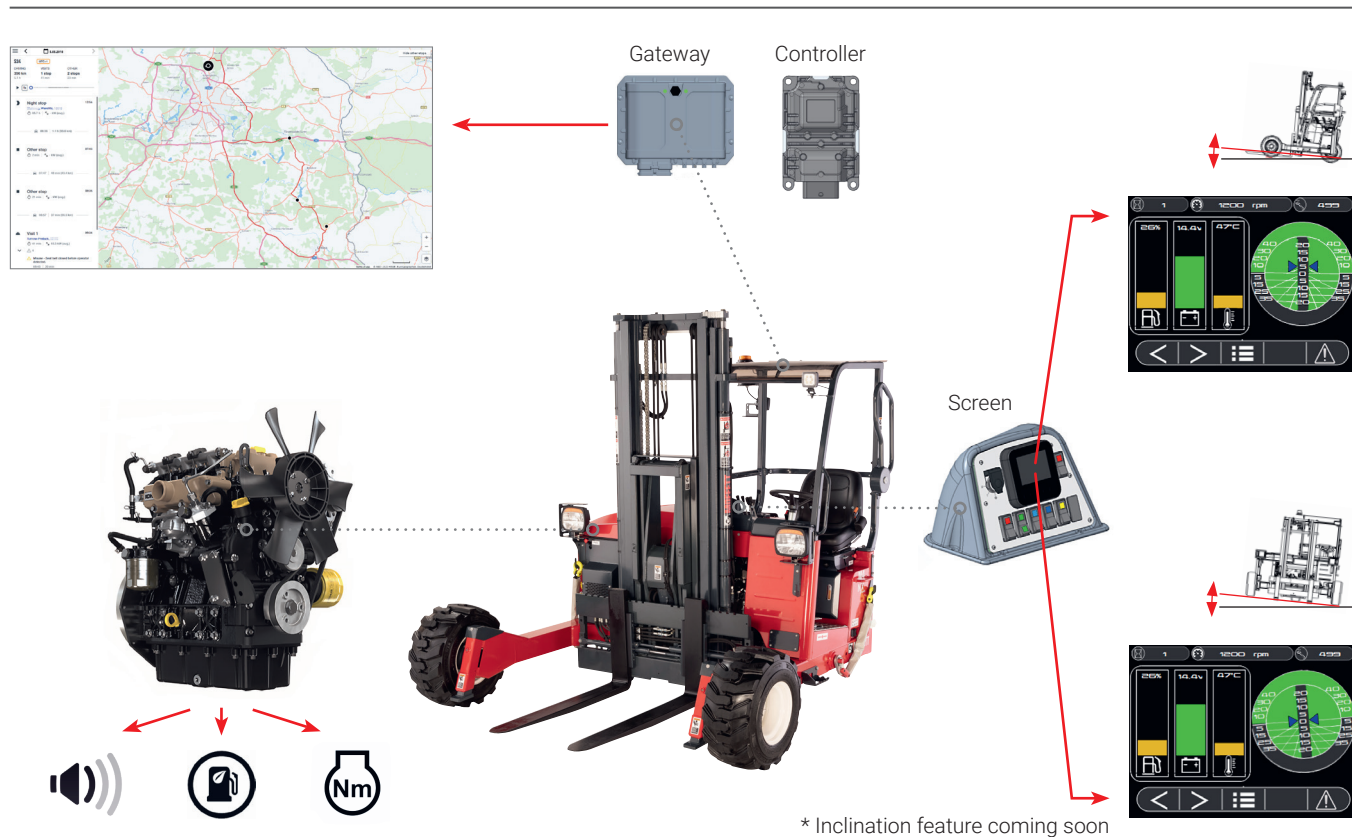
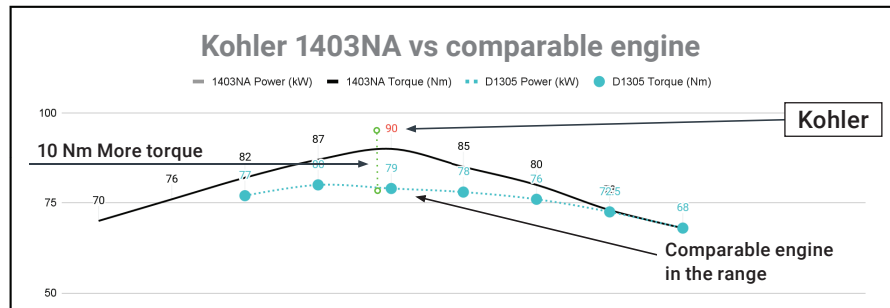


ENGINE TECHNOLOGY

More torque, more power

The Kohler KSD engine delivers 10Nm more torque at 1800 RPM than its predecessor. Fuel economy gains can be realized by running the engine at lower RPMs, resulting in reduced fuel consumption and lower noise levels.

With the "Torque max" and addition of a CAN engine, fuel efficiency will increase resulting in less cost and CO₂ per year.



Smart machine for smart operations

The new MOFFETT M4 NX V represents a giant leap forward in performance, efficiency, and safety. With its powerful new engine, this machine is capable of handling even the most demanding loads with ease, while also saving on fuel costs and reducing emissions.

One of the key features of the MOFFETT M4 NX V is its advanced CAN bus system, which interconnects all electronic control units and allows for seamless

communication between different parts of the machine. This system is powered by a smart gateway that transmits data to a cloud platform, allowing you to access vital information about your trucks and operators from anywhere at any time. The new full-color display screen provides alerts and notifications, keeping operators informed about the machine's status and helping to ensure that it operates safely and at peak efficiency.

ALWAYS A MOFFETT FOR YOUR NEED

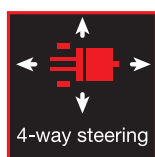
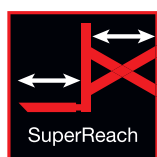
Model	M4 NX 20.1	M4 NX 20.3	M4 NX 20.4	M4 NX 25.1	M4 NX 25.3	M4 NX 25.4
Lift capacity	2,000 kg @ 600 mm	2,000 kg @ 600 mm	2,000 kg @ 600 mm	2,500 kg @ 600 mm	2,500 kg @ 600 mm	2,500 kg @ 600 mm
Engine	KSD 1403NA	KSD 1403NA	KSD 1403NA	KSD 1403NA	KSD 1403NA	KSD 1403NA
Lift height*	2.2M / 3.0M / 3.6M / 4.2M					
Standard tyres*	23"/400x4	23"/23"	23"/23"	27"/400 x 4"	27"/27"	27"/27"
Overhang**	1,135 mm	1,135 mm	1,135 mm	1,195 mm	1,195 mm	1,195 mm
Ground clearance	200 mm	200 mm	200 mm	265 mm	265 mm	265 mm

The above specifications can be changed by the manufacturer without prior notice.

* Other options available

**The values vary depending of machine specification and type of mounting kit

Whatever the application, the M4 NX is available with an extensive range of options:



- SuperReach
- Remote GroundStart
- Multi-directional / 4-way system: All wheels can be turned for traveling sideways when handling long loads and/or negotiating tight access areas or narrow openings (available on all three-wheel-driven M4 models)
- Different lifting heights
- Different tire options
- Choice of forks
- Load backrest and many more

Solving your challenges

The compact and agile MOFFETT M4 NX V is built to handle industrial and commercial jobs easily. It is incredibly powerful yet lightweight and compact enough to be carried on almost any truck or trailer. Its all-wheel drive takes you safely from the warehouse floor to the poultry shed door or over rough terrain easily. Choose from a wide range of options and attachments, including 4-way steering for negotiating tight access areas with long loads.

The M4 NX V is the specialist for efficient load handling in busy urban traffic and confined operating conditions:

- Windows and doors delivery
- Recycling and waste management
- Chemicals
- Industrial gas
- Building material
- Animal feeds
- Beverage products
- Turf

...and much more.

DELIVER AS PROMISED WITH HIAB SERVICES

When you invest in Hiab equipment, you invest in quality performance to safely and efficiently fulfill your commitments to your customers – every single day.

With Hiab Services, we are here for you throughout your equipment lifecycle, giving the uptime and reliability you need to deliver as promised. From the moment of installation, we can ensure that your Hiab equipment keeps its original performance – delivering always to your expectations.

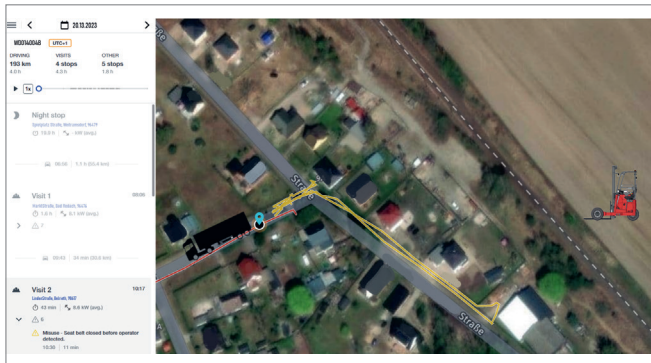
With the latest tools, connectivity and a wide network of experts, we support you whenever and wherever you need us. So you can sleep well at night – every single night.



FIND YOUR NEAREST SERVICE CENTRE ►

HIAB HICONNECT FOR MOFFETT

The MOFFETT M4 NX v is equipped with HiConnect. This technology provides a real-time overview of over 100 machine parameters, ranging from battery capacity to delivery route and time, driver safety, and maintenance notifications. Some parameters can be viewed directly on the machine's color display, while others can be accessed through the HiConnect portal.



Sample image. Actual image may vary.

Improved performance

With HiConnect, you can gain valuable insights into how your equipment has been used, where it has been used, and with what capacity. This information can help you optimize usage and utilization, increase uptime, and improve productivity.



Location control

You can track each unit in real time and monitor driving routes and times. Knowing how far the forklift has been driven can help you optimize battery loading for the next job. You can also quickly recover the position of any lost units.

Control over maintenance needs

From one easily accessible place, you can see your equipment's service history, upcoming services based on service plans, and real-time service counters based on actual usage. This information can help you increase equipment lifetime, optimize service needs, and avoid unexpected downtime.



PB-M4NX-EN-WW_230524

BUILT TO PERFORM

Hiab is a leading provider of smart and sustainable load handling solutions. We are committed to delivering the best customer experience every day with the most engaged people and partners. Hiab's premium equipment includes HIAB, EFFER and ARGOS loader cranes, MOFFETT and PRINCETON truck mounted forklifts, LOGLIFT forestry cranes, JONSERED recycling cranes, MULTILIFT skiploaders and hooklifts, GALFAB roll-off cable hoists, and tail lifts under the ZEPRO, DEL and WALTCO brands. As the industry pioneer, Hiab continues to make load handling smarter, safer and more sustainable to build a better tomorrow.

www.hiab.com

Hiab is part of Cargotec Corporation. Cargotec (Nasdaq Helsinki: CGCBV) sales in 2022 totalled approximately EUR 4 billion and it employs around 11,500 people.

www.cargotec.com

To learn more about MOFFETT visit moffett.hiab.com

