

URW 340 SERIES



16.2M*
MAX. HOOK HEIGHT
(6 SECTION BOOM)

3030KG
LIFTING CAPACITY

SMART
RADIO REMOTE
CONTROL

3500MM
WIDE HORIZONTAL
EXTENSION (MAX)

MODEL	343	344	345	346
TONNE METER	8.1	7.8	7.2	7.2
WEIGHT	1100	1190	1325	1360
MAX CAPACITY	3030	3030	3030	3030
MAX RADIUS	7.51	9.81	12.11	14.42
MIN BOOM LENGTH	3.31	3.41	3.54	3.63
MAX ABOVE GROUND HOOK HEIGHT	9.5	11.7	14	16.2
MAX BELOW GROUND HOOK HEIGHT	8.7	11.5	14.3	17.1
OUTRIGGER WIDTH	3500	3500	3500	3500
WIDTH	2150	2150	2150	2150
INSTALLATION SPACE*	564	564	564	564
TOP OF BOOM TO SUBFRAME	2095	2095	2135	2212
BOOM TIP TO BACK OF COLUMN	3494	3594	3724	3814

*APPROXIMATE, ALLOW TOLERANCE FOR ADDITIONAL CLEARANCE



URW 346

(m) 0 1 2 3 4 5 6 5 6 7 8 9 10 11 12 13 14

WORKING RADIUS	0.73 - 2.4	2.5	2.7	3.0	3.5	4.0	4.5	5.0	5.5	6.0	6.5	7.0	8.0	9.0	10.0	11.0	12.0	13.0	14.4
1ST BOOM	3.03	2.8	2.5	2.3	1.93 (3.44M)														
2ND BOOM	3.03	2.78	2.53	2.28	1.93	1.63	1.43	1.25	1.05 (5.66M)										
3RD BOOM			2.23	2.03	1.68	1.38	1.19	1.05	0.93	0.83	0.73	0.68	0.63 (7.8M)						
4TH BOOM						1.03	0.93	0.83	0.78	0.73	0.68	0.63	0.53	0.48	0.43 (10.04)				
5TH BOOM							0.63	0.55	0.48	0.44	0.40	0.40	0.35	0.31	0.28	0.25	0.23 (12.23M)		
6TH BOOM							0.33 (4.9M)	300	280	260	250	230	210	190	170	160	140	130	



URW 345

(m) 0 1 2 3 4 5 6 5 6 7 8 9 10 11 12

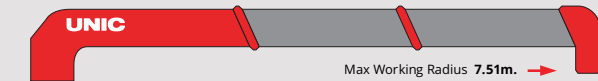
WORKING RADIUS	0.71-2.4	2.5	2.7	3	3.5	4	4.5	5	5.5	6	6.5	7	8	9	10	11	12.11
1ST BOOM	3.03	2.78	2.58	2.28	3.03 (3.35M)												
2ND BOOM	3.03	2.78	2.58	2.28	2.03 (3.35M)												
3RD BOOM		2.23	2.23	2.03	1.68	1.38	1.2	1.05	0.93	0.83	0.75	0.68	0.63 (7.79M)				
4TH BOOM						1.03	0.93	0.83	0.78	0.73	0.68	0.3	0.53	0.48	0.46 (9.95M)		
5TH BOOM							0.76	0.63	0.55	0.48	0.44	0.4	0.35	0.31	0.28	0.25	0.25



URW 344

(m) 0 1 2 3 4 5 6 5 6 7 8 9

WORKING RADIUS	0.67-2.6	2.7	3	3.5	4	4.5	5	5.5	6	7	8	9	9.81
1ST BOOM	3.03	2.63	2.33										
2ND BOOM	3.03	2.63	2.33	1.98	1.68	1.48	1.28	1.18 (5.46M)					
3RD BOOM		2.33	2.13	1.73	1.43	1.23	1.08	0.98	0.88	0.73	0.68 (7.63M)		
4TH BOOM					1.03	0.93	0.83	0.78	0.73	0.63	0.56	0.5	0.48



URW 343

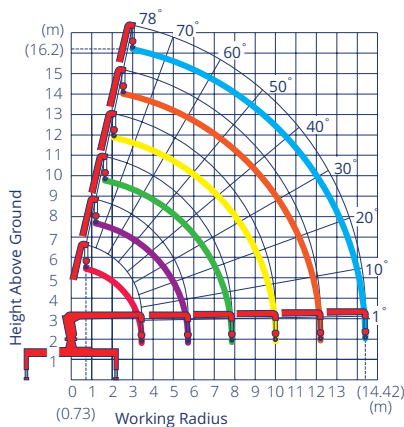
(m) 0 1 2 3 4 5 6 5 6 7

WORKING RADIUS	0.63-2.6	2.7	3	3.5	4	4.5	5	5.5	6	7	7.51
1ST BOOM	3.03	3.03	2.48	2.33 (3.12M)							
2ND BOOM	3.03	3.03	2.48	3.03	1.73	1.53	1.33	1.28 (5.36M)			
3RD BOOM		2.33	2.13	1.78	1.48	1.28	1.13	1.03	0.93	0.73	0.68

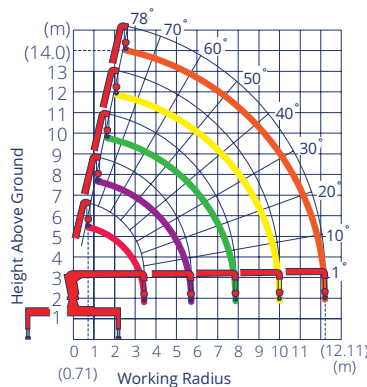
* ABOVE WEIGHTS DO NOT INCLUDE 30KG HOOK WEIGHT

URW 340 SERIES LOAD CHARTS

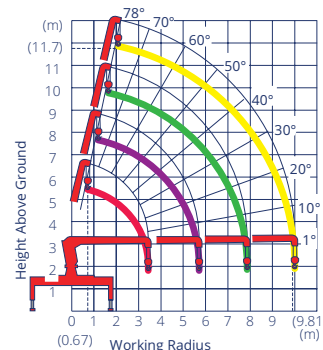
URW 340 SERIES WORKING RANGE CHARTS



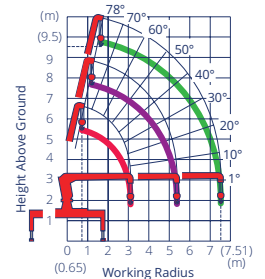
URW 346



URW 345



URW 344



URW 343