

# URW 290 SERIES



**13.9M\***  
MAX. HOOK HEIGHT  
ABOVE GROUND

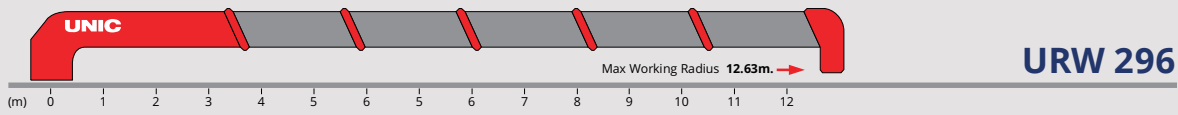
**3030KG**  
LIFTING CAPACITY

**SMART**  
RADIO REMOTE  
CONTROL

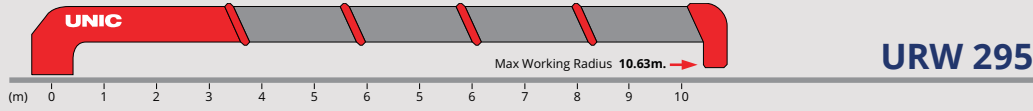
**3400MM**  
WIDE HORIZONTAL  
EXTENSION (MAX)

MODEL	293	294	295	296
TONNE METER	5.1	4.8	4.5	4.5
WEIGHT	865	935	1025	1125
MAX CAPACITY	3030	3030	3030	3030
MAX RADIUS	6.43	8.73	10.63	12.63
MIN BOOM LENGTH	2.79	3.17	3.15	3.25
MAX ABOVE GROUND HOOK HEIGHT	7.9	10.1	12.0	13.9
MAX BELOW GROUND HOOK HEIGHT	7.4	10.1	12.5	14.9
OUTRIGGER WIDTH	3400	3400	3400	3400
WIDTH	1860	1860	1860	1860
INSTALLATION SPACE*	547	547	547	547
TOP OF BOOM TO SUBFRAME	1851	1849	1910	2043
BOOM TIP TO BACK OF COLUMN	2979	3359	3339	3439

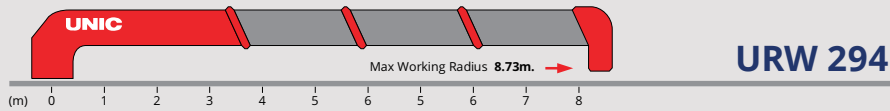
\*APPROXIMATE, ALLOW TOLERANCE FOR ADDITIONAL CLEARANCE



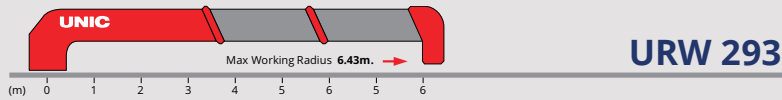
WORKING RADIUS	0.78-1.5	1.8	2	2.5	3	3.5	4	5	6	7	8	9	10	11	12	12.63
1ST BOOM	3.03	2.43	2.13	1.73	1.38 (3.08M)											
2ND BOOM	3.03	2.43	2.13	1.73	1.43	1.23	1.03	0.8 (5.01M)								
3RD BOOM		1.73(2.20M)	1.53	1.28	1.08	0.93	0.73	0.6	0.50 (6.93M)							
4TH BOOM				0.93	0.83	0.73	0.58	0.48	0.41	0.36	0.33 (8.83M)					
5TH BOOM							0.48	0.38	0.3	0.26	0.23	0.2	0.18	0.18 (10.73M)		
6TH BOOM							0.28 (5.30M)	0.24	0.21	0.18	0.16	0.14	0.13	0.13	0.1	



WORKING RADIUS	0.75-1.5	1.8	2	2.5	3	3.5	4	5	6	7	8	9	10	10.63
1ST BOOM	3.03	2.43	2.13	1.93	1.73	1.43 (2.98M)								
2ND BOOM	3.03	2.43	2.13	1.73	1.43	1.23	1.03	0.83 (4.91M)						
3RD BOOM		1.73(2.20M)	1.53	1.28	1.08	0.93	0.73	0.63	0.53 (6.83M)					
4TH BOOM				0.93	0.83	0.73	0.58	0.48	0.41	0.36	0.33 (8.73M)			
5TH BOOM							0.48	0.38	0.3	0.26	0.23	0.2	0.18	0.18



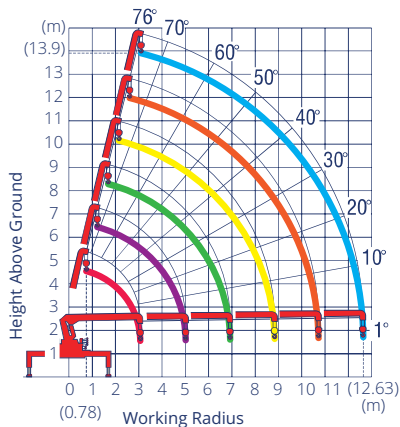
WORKING RADIUS	0.75-1.6	1.8	2	2.5	3	3.5	4	5	6	7	8	8.73
1ST BOOM	3.03	2.55	2.28	1.83	1.48							
2ND BOOM	3.03	2.55	2.28	1.83	1.48	1.25	1.08	0.83 (4.93M)				
3RD BOOM		1.88(2.20M)	1.63	1.33	1.13	0.98	0.78	0.63	0.58 (6.83M)			
4TH BOOM				0.98	0.88	0.78	0.63	0.53	0.43	0.38	0.33	



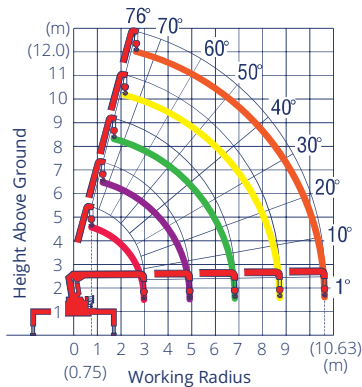
WORKING RADIUS	0.66-1.6	1.8	2	2.5	3	3.5	4	5	6	6.43
1ST BOOM	3.03	2.55	2.28	1.83	1.73 (2.62M)					
2ND BOOM	3.03	2.55	2.28	1.83	1.48	1.25	1.08	0.93 (4.55M)		
3RD BOOM		1.88 (2.20M)	1.63	1.33	1.13	0.98	0.78	0.63	0.58	

\* ABOVE WEIGHTS DO NOT INCLUDE 30KG HOOK WEIGHT

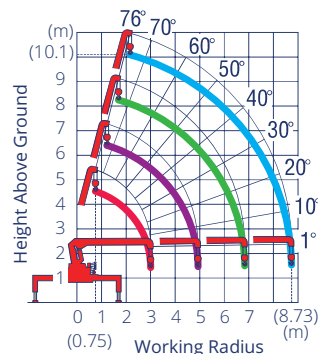
## URW 290 SERIES WORKING RANGE CHARTS



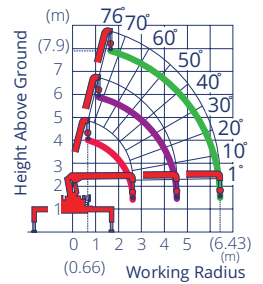
URW 296



URW 295



URW 294



URW 293