

# URW 230 SERIES



**9.7M\***  
MAX. HOOK HEIGHT  
ABOVE GROUND

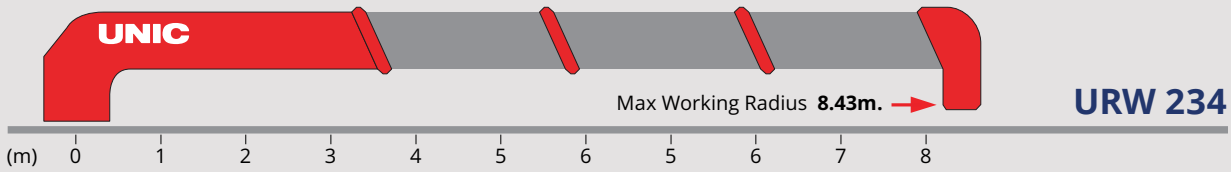
**2330KG**  
LIFTING CAPACITY

**SMART**  
RADIO REMOTE  
CONTROL

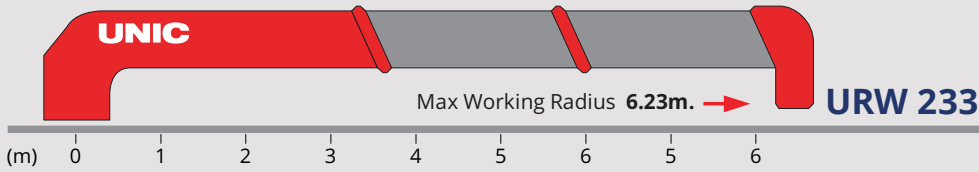
**2600MM**  
WIDE HORIZONTAL  
EXTENSION

MODEL	232	233	234
TONNE METER	4.125	4	4
WEIGHT	730	795	875
MAXIMUM CAPACITY	2330	2330	2330
MAXIMUM RADIUS	4.23	6.23	8.43
MIN BOOM LENGTH	2.5	2.59	2.87
MAXIMUM ABOVE GROUND HOOK HEIGHT	5.6	7.6	9.7
MAXIMUM BELOW GROUND HOOK HEIGHT	4.8	7.2	9.9
OUTRIGGER WIDTH	2600	2600	2600
WIDTH	1856	1856	1856
INSTALLATION SPACE*	518	518	518
TOP OF BOOM TO SUBFRAME	1816	1816	1840
BOOM TIP TO BACK OF COLUMN	2694	2784	3065

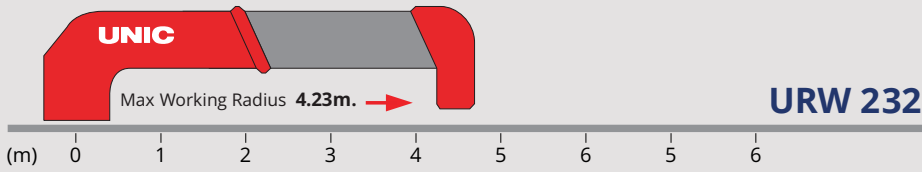
\*APPROXIMATE, ALLOW TOLERANCE FOR ADDITIONAL CLEARANCE



WORKING RADIUS	0.68-1.7	2	2.2	2.5	3	3.5	4	5	6	7	8	8.43
1ST BOOM	2.33	3.03	1.83	1.53	1.43 (2.7M)							
2ND BOOM	2.33	2.03	1.83	1.53	1.28	1.08	0.98	0.83 (4.63M)				
3RD BOOM					1.23	1.03	0.88	0.68	0.58	0.53 (6.53M)		
4TH BOOM							0.68	0.53	0.43	0.36	0.31	0.29



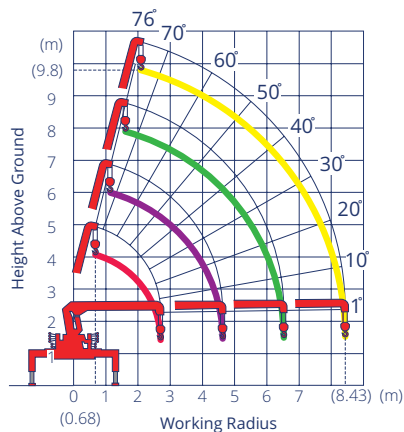
WORKING RADIUS	0.6-1.7	2	2.2	2.5	3	3.5	4	5	6.23
1ST BOOM	2.33	2.03	1.83	1.58(2.42M)					
2ND BOOM	2.33	2.03	1.83	1.53	1.28	1.08	0.98	0.88 (4.35M)	
3RD BOOM					1.23	1.03	0.88	0.68	0.53



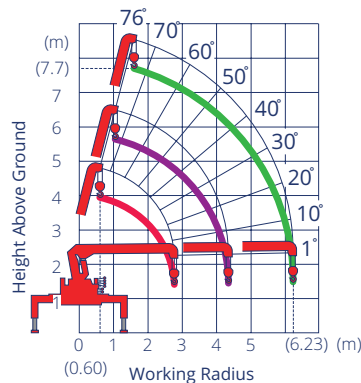
WORKING RADIUS	0.59-1.7	2	2.2	2.5	3	3.5	4	4.23
1ST BOOM	2.33	2.03	1.83	1.68 (2.33M)				
2ND BOOM	2.33	2.03	1.83	1.53	1.28	1.08	0.98	0.93

\* ABOVE WEIGHTS DO NOT INCLUDE 30KG HOOK WEIGHT

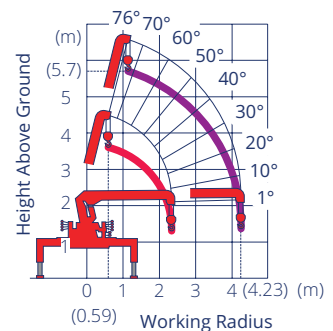
## URW 230 SERIES WORKING RANGE CHARTS



URW 234



URW 233



URW 232