

# UR 800 SERIES



**17.5M\***  
MAX. HOOK HEIGHT  
(ABOVE GROUND)

**8200KG**  
LIFTING CAPACITY

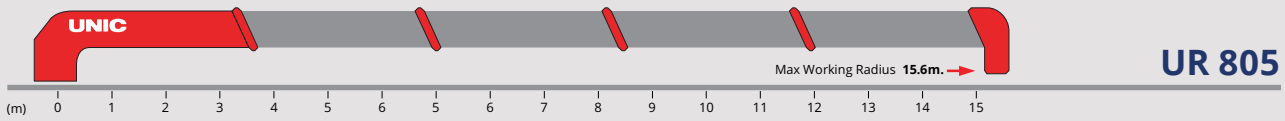
**SMART**  
RADIO REMOTE  
CONTROL

**5100MM**  
WIDE HORIZONTAL  
EXTENSION (MAX)

MODEL	805
TONNE METER	20.5
WEIGHT	3510
MAX CAPACITY	8070
MAX RADIUS	15.6
MIN BOOM LENGTH	4.4
MAX ABOVE GROUND HOOK HEIGHT	17.5
MAX BELOW GROUND HOOK HEIGHT	17.7
OUTRIGGER WIDTH	5100
WIDTH	2460
INSTALLATION SPACE*	1070
TOP OF BOOM TO SUBFRAME	2467
BOOM TIP TO BACK OF COLUMN	4525

\*APPROXIMATE, ALLOW TOLERANCE FOR ADDITIONAL CLEARANCE

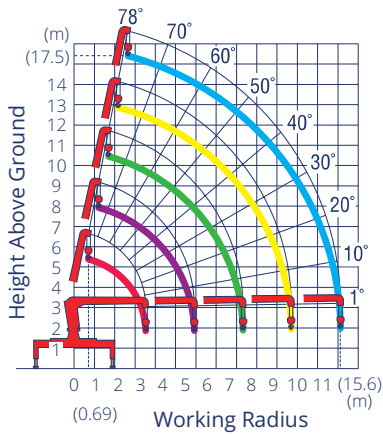
# UR 800 SERIES LOAD CHARTS



WORKING RADIUS	2.0	2.5	2.7	3.0	3.5	4.0	4.5	5.0	5.5	6.0	7.0	8.0	9.0	10.0	11.0	12.0	13.0	14.0	15.0	15.6
1ST BOOM	8.07	8.07	7.07	6.07	5.17	4.47 (4.10M)														
2ND BOOM	6.07	6.07	6.07	6.07	5.17	4.57	4.12	3.67	3.32	2.97	2.37									
3RD BOOM		3.07	3.07	3.07	3.07	3.07	3.07	3.07	2.87	2.37	1.97	1.72	1.57 (10.1M)							
4TH BOOM				2.67	2.67	2.67	2.67	2.67	2.67	2.67	2.12	1.72	1.52	1.32	1.17	1.02	0.92 (12.7M)			
5TH BOOM					2.07	2.07	2.07	2.07	2.07	2.07	1.97	1.72	1.52	1.32	1.17	1.02	0.87	0.77	0.67	0.57

\* ABOVE WEIGHTS DO NOT INCLUDE 70KG HOOK WEIGHT

# UR 800 SERIES WORKING RANGE CHARTS



URU 805



**LIFT YOUR  
BUSINESS TO  
THE NEXT LEVEL**