

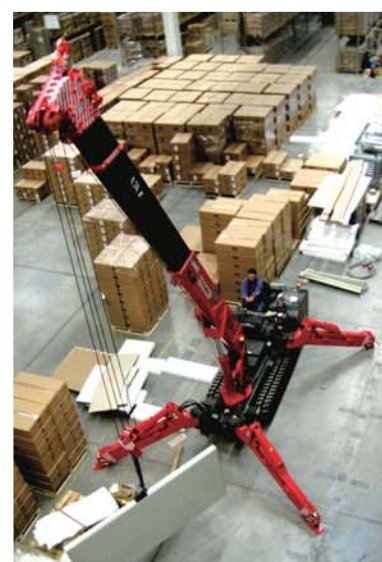
# UNIC

UNIC MINI-CRAWLER CRANE

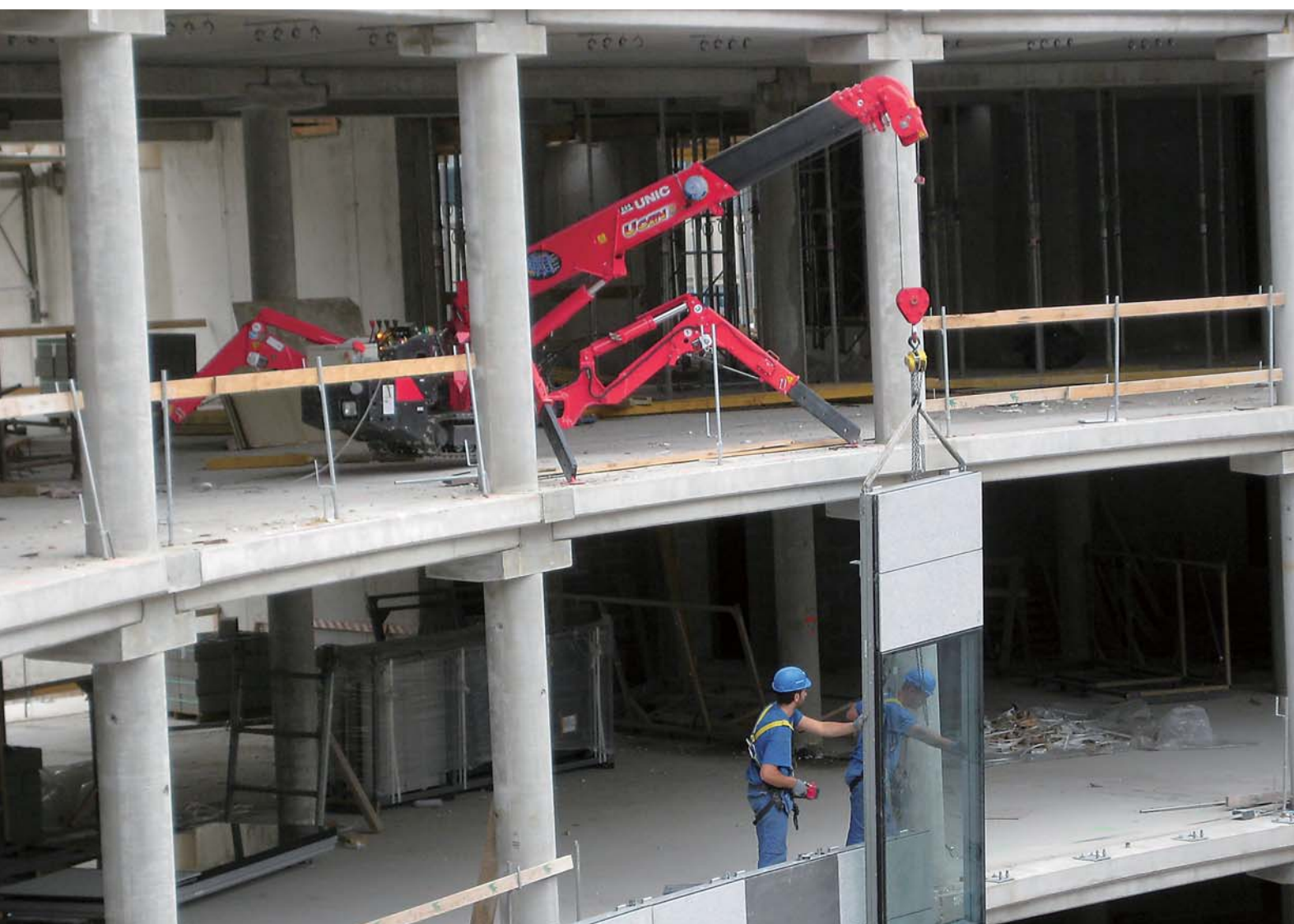


UR-W094C UR-W245C UR-W295C UR-W376C UR-W546C UR-W547C UR-W706C UR-W1006C











# UNIC MINI-CRAWLER CRANE

## UNIC mini-crawler crane is incredibly compact and useful lifting equipment.

UNIC mini-crawler crane is perfect lifting equipment that enables to meet wide variety of applications and ideal tools to support lifting works wherever access is restricted or working space is confined. Its excellent accessibility and flexibility will make many labor-intensive lifting operations be easier, safer and faster by UNIC mini-crawler crane.

### Recommended application:

Shopping Mall, Warehouse, Factory & Airport operation, Roof-top, In-Between Floor, Underground operation, Steel erection, Monument Lifting, Landscaping, Machinery Removal & Installation, Power Plant Maintenance, Tunnel Operation, Forestry, Glass lifting & installation,



## UNIC is Compact

UNIC mini-crawler cranes are excellent lifting equipment that quickly, safely and easily meets all of restricted and confined-area lifting requirements.



## UNIC is Powerful

UNIC mini-crawler cranes are powerful lifting tools in confined area where no other lifting equipments could have gone before.



## UNIC is Clean

UNIC mini-crawler cranes with electric power option are ideal for working indoors where exhaust fumes are strictly restricted. Electric motor cuts down the pollution and noise levels to a minimum.





# UNIC MINI-CRAWLER CRANE LINE-UP

UNIC mini-crawler crane is versatile and maneuverable lifting equipment.

UNIC offers complete and wide range of mini-crawler cranes. Small capacity cranes, UR-W094/245/295C, are compact enough to pass through a standard size single doorway and UR-W376/546/547/706C have accessibility to travel through standard size double doorway. Our new machine, UR-W1006C, the largest mini-crawler crane in the range. UNIC mini-crawler crane is maneuverable and excellent lifting equipment in confined area. UNIC mini-crawler crane maximizes your lifting solutions !!!



UR-W094C

UR-W245C

UR-W295C

UR-W376C

UR-W546C

UR-W547C

UR-W706C

UR-W1006C

Lifting capacity	0.995t × 1.5m	Lifting capacity	2.43t × 1.5m	Lifting capacity	2.93t × 1.4m	Lifting capacity	3.03t × 2.5m	Lifting capacity	4.05t × 2.5m	Lifting capacity	4.05t × 2.5m	Lifting capacity	6.05t × 3.0m	Lifting capacity	10.14t × 3.0m
Max working radius	5.17m	Max working radius	5.85m	Max working radius	8.41m	Max working radius	14.45m	Max working radius	15.52m	Max working radius	17.83m	Max working radius	18.60m	Max working radius	21.93m
Max hook height	5.6m (Approx.)	Max hook height	6.3m (Approx.)	Max hook height	8.8m (Approx.)	Max hook height	14.9m (Approx.)	Max hook height	16.0m (Approx.)	Max hook height	18.2m (Approx.)	Max hook height	19.5m (Approx.)	Max hook height	22.8m (Approx.)
Dimensions	(W) 595mm	Dimensions	(W) 600mm	Dimensions	(W) 600mm	Dimensions	(W) 1300mm	Dimensions	(W) 1380mm	Dimensions	(W) 1380mm	Dimensions	(W) 1670mm	Dimensions	(W) 2000mm
	(H) 1290mm		(H) 1340mm		(H) 1375mm		(H) 1800mm		(H) 2035mm		(H) 1980mm		(H) 2185mm		(H) 2460mm
	(L) 1870mm		(L) 2150mm		(L) 2690mm*		(L) 4340mm		(L) 4870mm		(L) 4955mm		(L) 5610mm		(L) 6060mm
Mass of crane	1000kg	Mass of crane	1500kg	Mass of crane	1850kg*	Mass of crane	3860kg	Mass of crane	4920kg	Mass of crane	5020kg	Mass of crane	7920kg	Mass of crane	13800kg

\* Petrol engine model



# UR-W094C

# UNIC MINI-CRAWLER CRANE

UR-W094C is the smallest mini-crawler crane in the range.

Measuring 595mm wide and weighing 1000kg, it is ideal for maneuvering into confined working area and capable to pass through standard size single doorway. Its outriggers allow for independent multi-angle configurations to sit at the best position in restricted or confined area.

Max  
5.17m  
Working radius

Max  
5.6m  
Hook height (Approx.)  
(Above ground level)

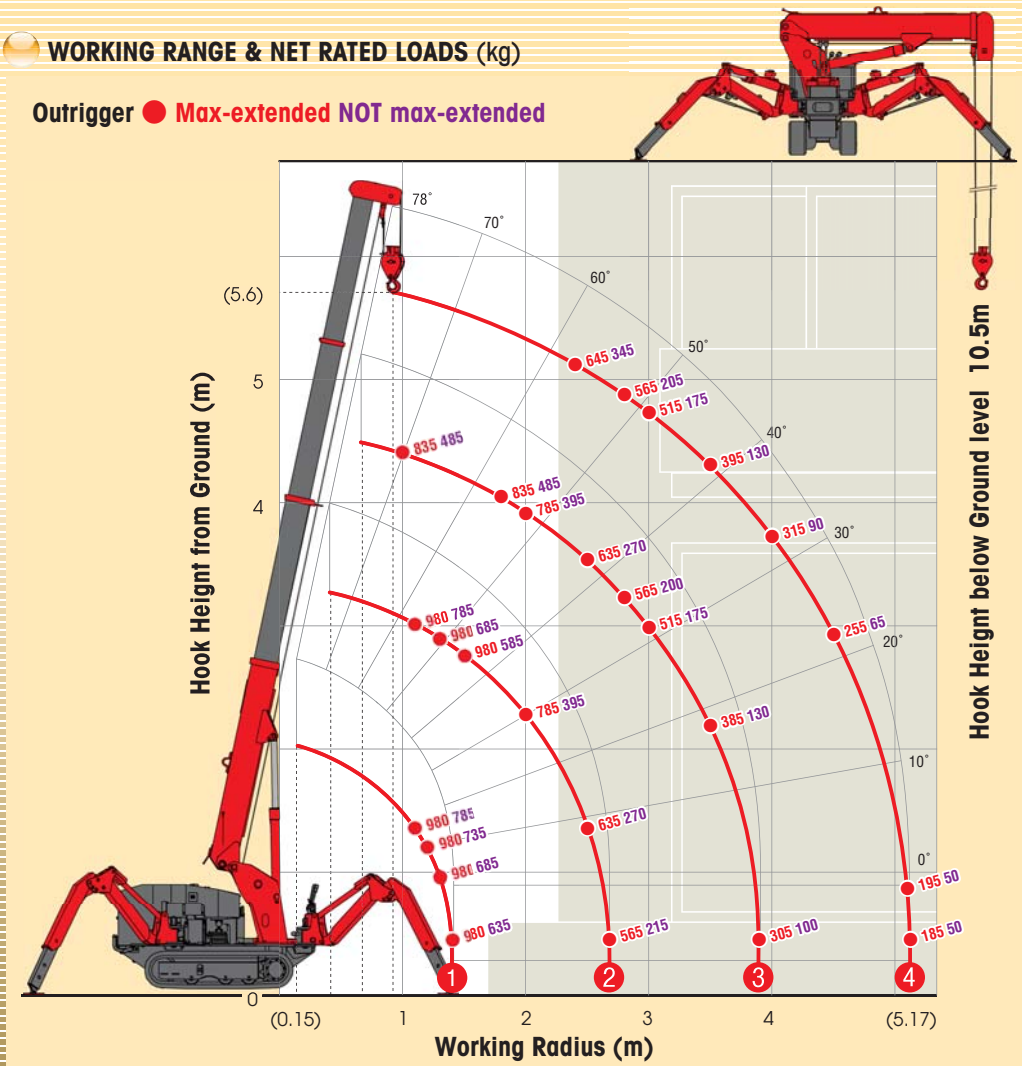
Max  
0.995t  
×1.5m  
Lifting capacity

1000kg  
Mass of crane

Radio  
remote  
control

## WORKING RANGE & NET RATED LOADS (kg)

Outrigger ● Max-extended NOT max-extended



Automatic stop for overwinding

Weight for  
Automatic stop for  
overwinding

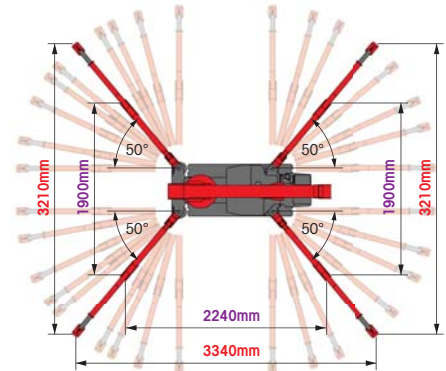
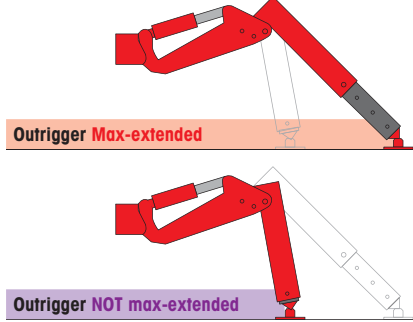
Emergency stop button

White crawler belt (Options)

## SPECIFICATIONS

Crane model	UR-W094C
Lifting capacity	Max. 0.995t at 1.5m
Working radius	Min. 0.15m, Max. 5.17m
Hook height (Approx.)	Max. 5.6m
Length	Max. 10.5m with 2-part line
Extending speed	Min. 1.73m to Max. 5.49m
Raising angle / speed	3.76m / 17.0 sec.
Structure	0° to 78° / 6.5 sec.
Winch	4-section box beam type telescoping boom
Single line speed	17.0 m/min (at 3rd layer)
Hook speed	8.5 m/min at 3rd layer with 2-part line
Structure	Hydraulic motor driven, worm gear reduction, worm self-locking brake and wire rope retaining roller
Wire rope	Construction : 6 x Fi(29) GRADE B / Diameter x Length : 7mm x 27.0m / Breaking strength : 28.9kN [2950 kgf]
Hook block	0.98t capacity, single sheave with safety latch
Range	360° continuous rotation on a ball bearing race
Speed	1.5 rpm
Structure	Trochoid motor, worm gear reduction, spur gear reduction, and worm self-locking brake (supported by ball bearings)
Outriggers	3-steps (with damper) for bend and 4-steps extension. Double acting hydraulic cylinders with double pilot-operated check valves, direct pushing type (Directly connected with hydraulic automatic lock device)
Type	Variable delivery piston pump
Rated pressure	21.6 MPa [220 kgf/cm <sup>2</sup> ]
Rated delivery	20 liters/min
Rated revolution	1800 rpm
Hydraulic oil tank capacity	17 liters
Safety devices	Pressure relief valve for hydraulic circuit / Counterbalance valves for boom raising and boom telescoping cylinders / Double pilot-operated check valves for outrigger cylinders Boom angle indicator with load indicator / Hook safety latch / Automatic stop for overwinding / Overwinding alarm / Automatic stop for leaving minimum wire rope Emergency stop button (Ignition cut) / Inter-lock device of crane and crawling levers / Inter-lock device of crane and outriggers / Level / Load meter

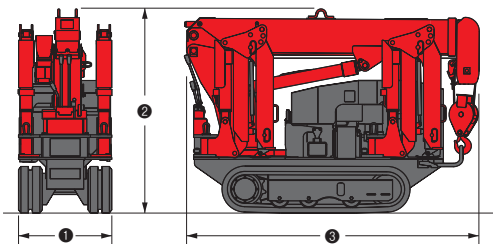
## OUTRIGGER POSITIONS



## CRAWLING GEAR

Crane model	UR-W094C
Crawling speed	0~2.2 km/h, forward / reverse
Hill climbing ability	20°
Tread length	900mm
Ground contact pressure	36.3 kPa (0.37 kgf/cm <sup>2</sup> )
Engine manufacturer / model	Mitsubishi / GB300LE
Displacement	296cc
Maximum output	5.5kW(7.5PS) / 1800 rpm, Rated output
Fuel	Petrol
Fuel tank capacity	6 liters
Steering	Hydraulic drive independent of left / right
Starter	Starter motor (Recoil starter)

## DIMENSIONS



Crane model	UR-W094C
1 Total width	595mm
2 Total height	1290mm
3 Total length	1870mm
Mass of crane	1000kg



# UR-W245C

# UNIC MINI-CRAWLER CRANE

UR-W245C is compact enough, yet provides the maximum 2.43t of lifting power.

It is capable of lifting heavy loads of 2.43t with its class-leading minimum dimension and weight. The light weight yet allows it to move floor to floor in a standard freight elevator. Its compactness together with heavy lifting capacity provides excellent lifting solutions especially in restricted or confined area.

Max 5.85m Working radius

Max 2.43t x 1.5m Lifting capacity

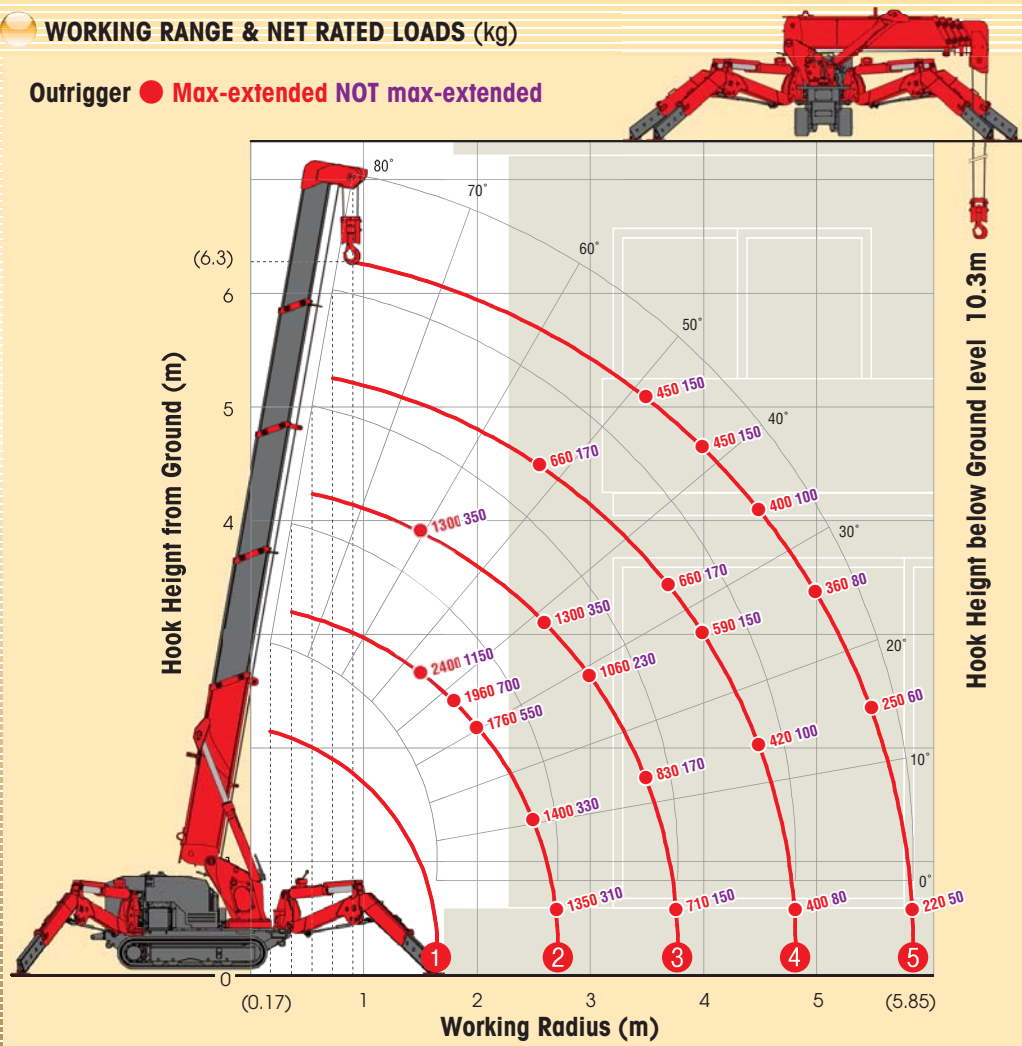
Max 6.3m Hook height (Approx.) (Above ground level)

1500kg Mass of crane

Radio remote control

## WORKING RANGE & NET RATED LOADS (kg)

Outrigger ● Max-extended NOT max-extended



## Automatic stop for overwinding

Weight for Automatic stop for overwinding

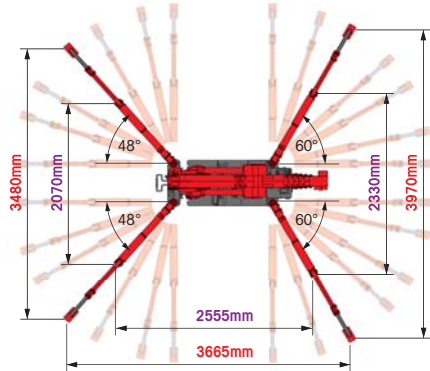
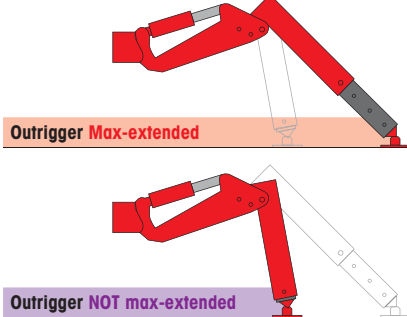
## Emergency stop button

## White crawler belt (Options)

## SPECIFICATIONS

Crane model	UR-W245C
Lifting capacity	Max. 2.43t at 1.5m
Working radius	Min. 0.17m, Max. 5.85m
Hook height (Approx.)	Above ground level: Max. 6.3m Below ground level: Max. 10.3m with 4-part line
Boom	Length: Min. 1.98m to Max. 6.19m Extending speed: 4.21m / 14.0 sec. Raising angle / speed: 0° to 80° / 10.0 sec. Structure: 5-section box beam type telescoping boom
Winch	Single line speed: 52.0 m/min (at 4th layer) Hook speed: 13.0 m/min at 4th layer with 4-part line Structure: Hydraulic motor driven, spur gear reduction, with automatic mechanical brake
Wire rope	Construction : IWRC 6 x WS(26) GRADE B / Diameter x Length : 8mm x 47.5m / Breaking strength : 42.4kN (4320 kgf)
Hook block	2.40t capacity, 2 sheaves with safety latch
Range	360° continuous rotation on a ball bearing race
Speed	2.0 rpm
Structure	Trochoid motor, worm gear reduction, spur gear reduction, and worm self-locking brake (supported by ball bearings)
Outriggers	2-section (with damper) for bend and 3-section extension. Double acting hydraulic cylinders with pilot-operated check valves, direct pushing type (Directly connected with hydraulic automatic lock device)
Hydraulic pump	Type: Variable delivery piston pump Rated pressure: 21.6 MPa [220 kgf/cm <sup>2</sup> ] Rated delivery: 36 liters/min Rated revolution: 1800 rpm Hydraulic oil tank capacity: 23 liters
Safety devices	Pressure relief valve for hydraulic circuit / Counterbalance valves for boom raising and boom telescoping cylinders / Double pilot-operated check valves for outrigger cylinders Boom angle indicator with load indicator / Hook safety latch / Automatic mechanical brake for winch / Automatic stop for overwinding / Overwinding alarm Automatic stop for leaving minimum wire rope / Emergency stop button / Inter-lock device of crane and crawling levers / Level / Load meter

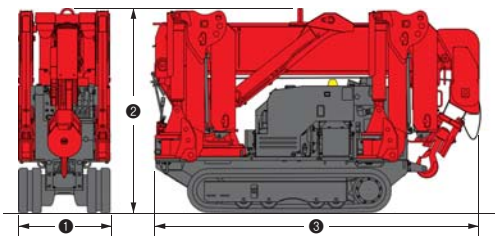
## OUTRIGGER POSITIONS



## CRAWLING GEAR

Crane model	UR-W245C
Crawling speed	Low speed : 0~2.1 km/h, High speed : 0~3.8km/h, forward / backward
Hill climbing ability	20°
Tread length	1050mm
Ground contact pressure	46.7 kPa (0.48 kgf/cm <sup>2</sup> )
Engine manufacturer / model	Mitsubishi / GB400LE
Displacement	391cc
Maximum output	6.6kW(9.0PS) / 1800 rpm, Rated output
Fuel	Petrol
Fuel tank capacity	6 liters
Steering	Hydraulic drive independent of left / right
Starter	Starter motor

## DIMENSIONS



Crane model	UR-W245C
1 Total width	600mm
2 Total height	1340mm
3 Total Length	2150mm
Mass of crane	1500kg



# UR-W295C

# UNIC MINI-CRAWLER CRANE

UR-W295C is narrow enough to allow access through standard size single doorway, but with 2.93t of lifting power.

UNIC original stability sensor system provides the benefit of turnover protection for safety. Its outriggers allow for independent multi-angle configurations to place at the best position in restricted or confined area. Easy and quickly installed searcher hook and fly jib options will increase working radius and lifting height further more.

Max 8.41m  
Working radius

Max 2.93t  
×1.4m  
Lifting capacity

1850kg  
Mass of crane

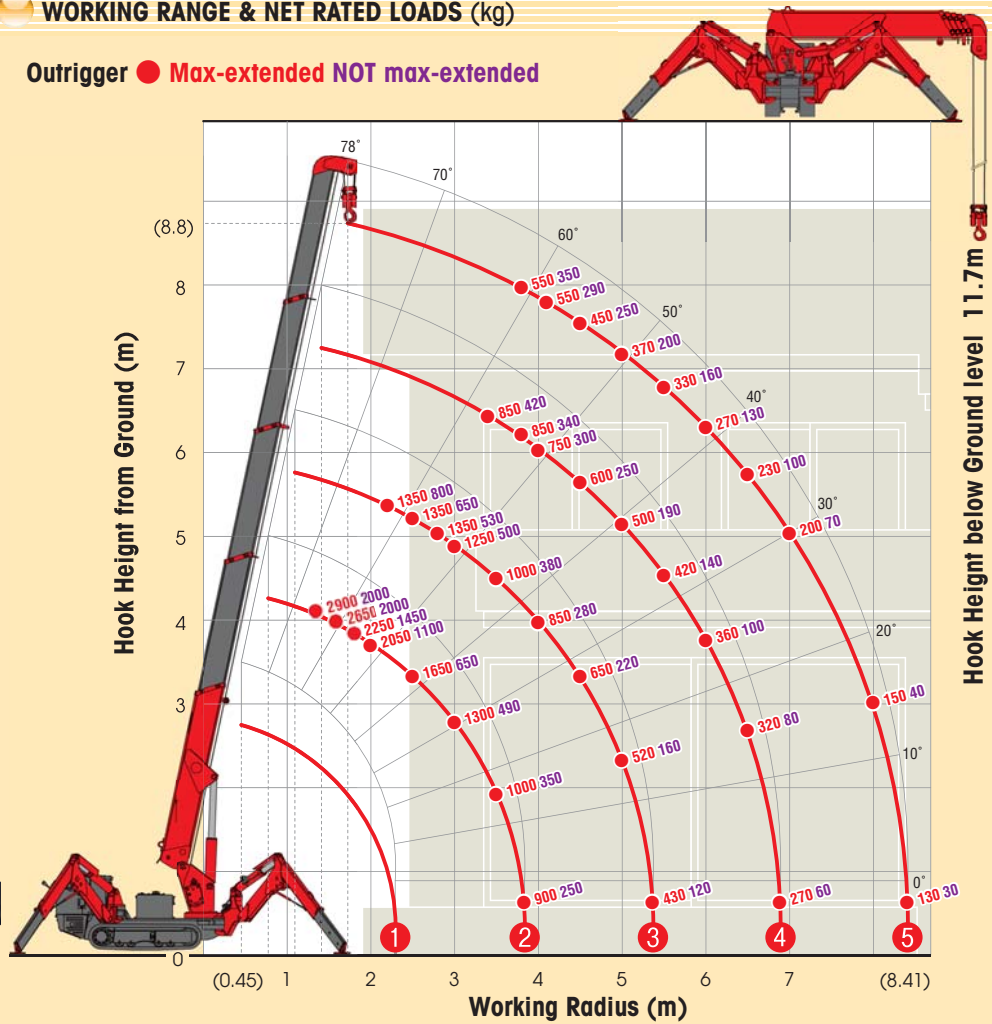
Radio remote control

Max 8.8m  
Hook height (Approx.)  
(Above ground level)

with electric power unit

## WORKING RANGE & NET RATED LOADS (kg)

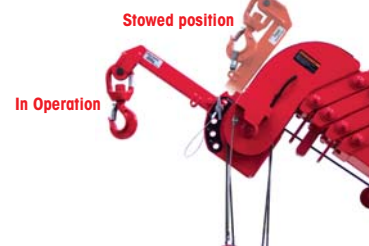
Outrigger ● Max-extended NOT max-extended



Load meter

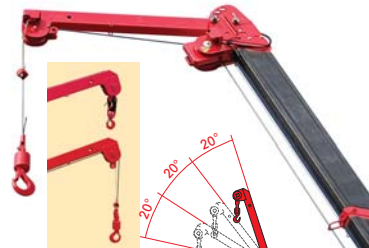


Searcher hook assembly (Options)



Length	500mm
Lifting capacity	Max. 300kg
Tilt angles	0°, 20°, 40°, 60°

Fly jib assembly (Options)

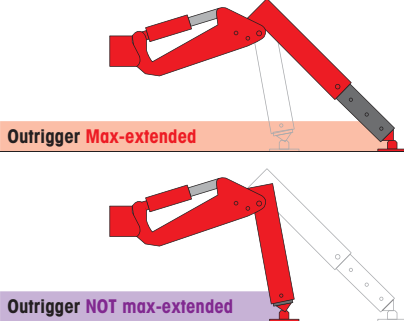


Length	1.5m
Lifting capacity	Max. 700kg
Tilt angles	0°, 20°, 40°, 60°

## SPECIFICATIONS

Crane model	UR-W295C	UR-W295C1
Lifting capacity	Max. 2.93t at 1.4m	
Working radius	Min. 0.45m, Max. 8.41m	
Hook height (Approx.)	Max. 8.8m	
Below ground level	Max. 11.7m with 4-part line	
Length	Min. 2.53m to Max. 8.65m	
Boom	Extending speed	6.12m / 22.0 sec.
	[with electric power unit]	[50Hz] 6.12m / 34.0 sec. [60Hz] 6.12m / 28.0 sec.
	Raising angle / speed	0° to 78° / 11.0 sec.
	[with electric power unit]	[50Hz] 0° to 78° / 18.0 sec. [60Hz] 0° to 78° / 15.0 sec.
Winch	Structure	5-section box beam type telescoping boom
	Single line speed	40.0 m/min (at 4th layer)
	[with electric power unit]	[50Hz] 22.0 m/min (at 4th layer) [60Hz] 27.0 m/min (at 4th layer)
	Hook speed	10.0 m/min at 4th layer with 4-part line
Winch	[with electric power unit]	[50Hz] 5.5 m/min (at 4th layer with 4-part line) [60Hz] 6.7 m/min (at 4th layer with 4-part line)
	Structure	Hydraulic motor driven, spur gear reduction, with automatic mechanical brake
	Wire rope	Construction : IWRC 6 x WS(26) GRADE B / Diameter x Length : 8mm x 54.0m / Breaking strength : 42.4kN [4320 kgf]
	Hook block	2.90t capacity, 2 sheaves with safety latch
Slewing	Range	360° continuous rotation on a ball bearing race
	Speed	1.5 rpm
	Structure	Trochoid motor, worm gear reduction, spur gear reduction, and worm self-locking brake (supported by ball bearings)
Outriggers	Structure	2-section (with damper) for bend and 3-section extension. Double acting hydraulic cylinders with pilot-operated check valves, direct pushing type (Directly connected with hydraulic automatic lock device)
	Variable delivery piston pump	
Hydraulic Pump	Type	Variable delivery piston pump
	Rated pressure	21.6 MPa [220 kgf/cm <sup>2</sup> ]
	Rated delivery	38 liters/min
	Rated revolution	2000 rpm
Hydraulic oil tank capacity	27 liters	
Safety devices	Pressure relief valve for hydraulic circuit / Counterbalance valves for boom raising and boom telescoping cylinders / Pilot-operated check valves for outrigger cylinders / Boom angle indicator with load indicator / Hook safety latch / Automatic mechanical brake for winch / Automatic stop for overwinding / Overwinding alarm / Automatic stop for leaving minimum wire rope / Emergency stop button (Ignition cut) / Inter-lock device of crane and crawling levers / Inter-lock device of crane and outriggers / Level / Turn over prevention device / Load meter	

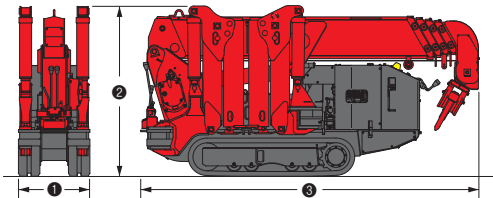
## OUTRIGGER POSITIONS



## CRAWLING GEAR

Crane model	UR-W295C	UR-W295C1
Crawling speed	0~2.3 km/h, forward / reverse	0~2.0 km/h, forward / reverse
[with electric power unit]	[50Hz] 0~1.2 km/h [60Hz] 0~1.4 km/h	[50Hz] 0~1.2 km/h [60Hz] 0~1.4 km/h
Hill climbing ability	20°	20°
Tread length	1050mm	1050mm
Ground contact pressure	48.0 kPa [0.49 kgf/cm <sup>2</sup> ]	49.8 kPa [0.51 kgf/cm <sup>2</sup> ]
[with electric power unit]	51.4 kPa [0.52 kgf/cm <sup>2</sup> ]	52.9 kPa [0.54 kgf/cm <sup>2</sup> ]
Engine manufacturer / model	Mitsubishi / GB400LE	Kubota / Z482-E3B
Displacement	391cc	479cc
Maximum output	6.6kW(9.0PS) / 1800 rpm, Rated output	7.4kW(10.0PS) / 2600 rpm, Rated output
Fuel	Petrol	Diesel
Fuel tank capacity	6 liters	10 liters
Steering	Hydraulic drive independent of left / right	Hydraulic drive independent of left / right
Starter	Starter motor (Recoil starter)	Starter motor

## DIMENSIONS



Crane model	UR-W295C	UR-W295C1
① Total width	600mm	
② Total height	1375mm [1430mm]	
③ Total Length	2690mm	2730mm
Mass of crane	1850kg [1980kg]	1920kg [2040kg]

## Electric power unit specifications

Rated power	3.7kW (3-phase 4 poles)
Voltage	AC 200V or 400V (50Hz / 60Hz) 3 phase 4P

\*Not included any cables.



# UR-W376C

UR-W376C features a six-section hydraulic boom to allow a maximum hook height of 14.9m.

The middle size UNIC mini-crawler crane can be operated either from the onboard operator seat or from a distance using a remote control. Its class-leading boom length of 14.61m brings wide working radius and excellent lifting height.

Max  
14.9m  
Hook height (Approx.)  
(Above ground level)

Max  
3.03t  
×2.5m  
Lifting capacity

Max  
14.45m  
Working radius

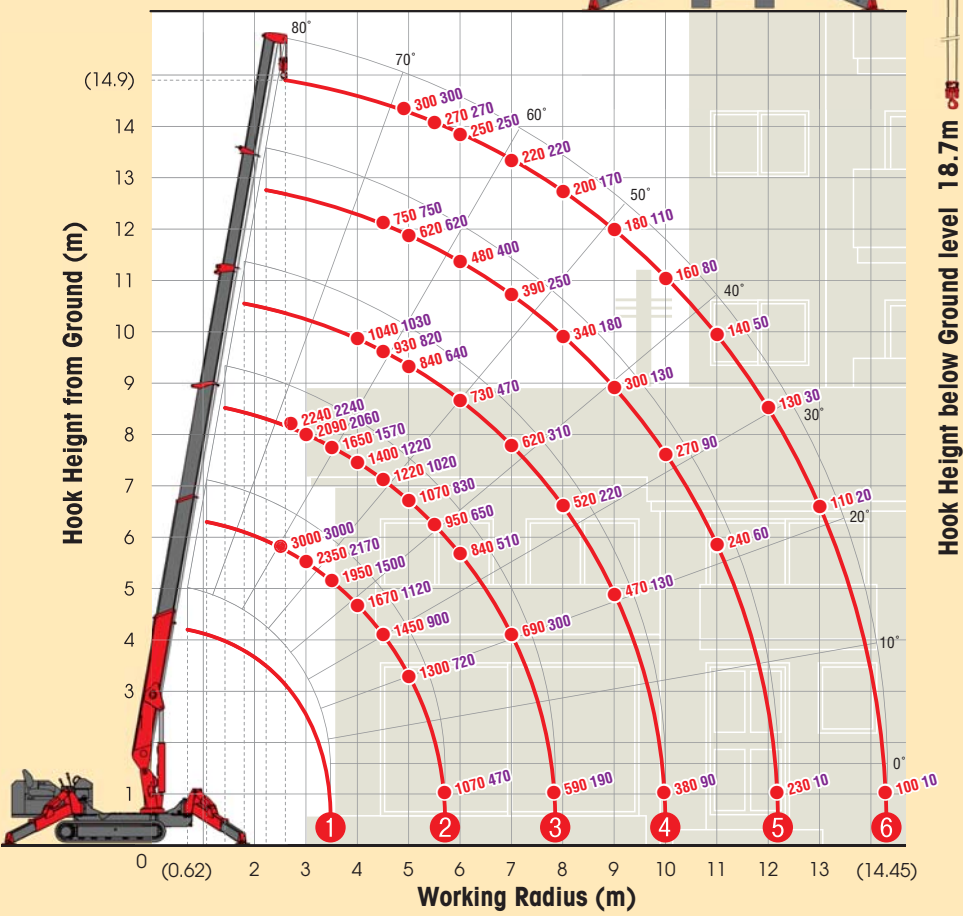
3860kg  
Mass of crane

Radio  
remote  
control



## WORKING RANGE & NET RATED LOADS (kg)

Outrigger ● Max-extended NOT max-extended

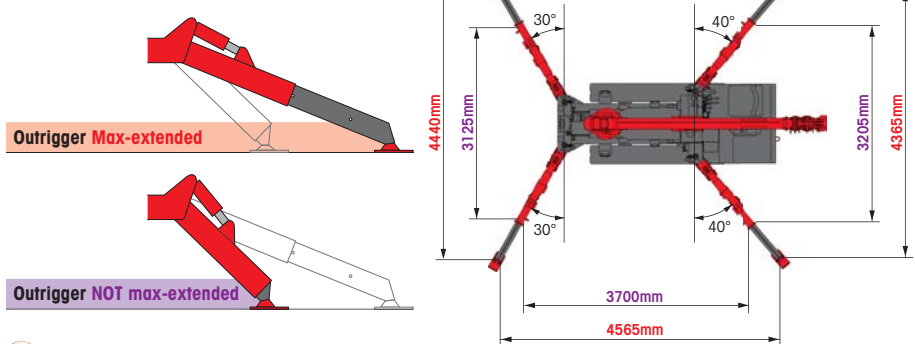


Fly jib assembly (Options)	
Searcher hook and Single line hook are included in Fly jib assembly. NOTE : Automatic stop for overloading is not available in combination with this Fly jib assembly. For more information, contact your local UNIC distributor.	
Length	2.0m
Lifting capacity	Max. 700kg
Tilt angles	0°, 20°, 40°, 60°

## SPECIFICATIONS

Crane model	UR-W376C2
Lifting capacity	Max. 3.03t at 2.5m
Working radius	Min. 0.62m, Max. 14.45m
Hook height (Approx.)	Max. 14.9m
Length	Min. 3.63m to Max. 14.61m
Boom	Extending speed [with electric power unit] 10.98m / 23.0 sec. [50Hz] 10.98m / 40.0 sec. [60Hz] 10.98m / 33.5 sec. Raising angle / speed [with electric power unit] 0° to 80° / 10.0 sec. [50Hz] 0° to 80° / 18.0 sec. [60Hz] 0° to 80° / 15.0 sec. Structure 6-section box beam type telescoping boom
Winch	Single line speed [with electric power unit] 68.0 m/min (at 4th layer) [50Hz] 34.0 m/min (at 4th layer) [60Hz] 40.0 m/min (at 4th layer) Hook speed [with electric power unit] 17.0 m/min at 4th layer with 4-part line [50Hz] 8.5 m/min (at 4th layer with 4-part line) [60Hz] 10.0 m/min (at 4th layer with 4-part line) Structure Hydraulic motor driven, spur gear reduction, with automatic mechanical brake and wire rope retaining roller Wire rope Construction : IWRC 6 x WS(26) GRADE B / Diameter x Length : 8mm x 85.0m / Breaking strength : 42.4kN (4320 kgf) Hook block 3.00t capacity, 2 sheaves with safety latch
Slewing	Range 360° continuous rotation on a ball bearing race Speed [with electric power unit] 2.5 rpm [50Hz] 2.1 rpm [60Hz] 2.5 rpm Structure Hydraulic motor driven, worm gear reduction, spur gear reduction, and worm self-locking brake (supported by ball bearings)
Outriggers	Horizontal, Vertical A double acting hydraulic cylinder, direct pushing type (Directly connected with hydraulic automatic lock device)
Hydraulic pump	Type Variable delivery piston pump Rated pressure 21.6 MPa [220 kgf/cm <sup>2</sup> ] Rated delivery 60 liters/min Rated revolution 2500 rpm
Hydraulic oil tank capacity	75 liters
Safety devices	Pressure relief valve for hydraulic circuit / Counterbalance valves for boom raising and boom telescoping cylinders / Pilot-operated check valves for outrigger cylinders (Horizontal) Double pilot-operated check valves for outrigger cylinders (Vertical) / Boom angle indicator with load indicator / Hook safety latch / Automatic mechanical brake for winch Automatic stop for overwinding / Overwinding alarm / Automatic stop for leaving minimum wire rope / Emergency stop button / Inter-lock device of crane and crawling levers Inter-lock device of crane and outriggers / Level / Automatic stop for overloading (KM-100) / Digital load meter / Three colored lamp / Headlight / Boom outrigger monitor lamp

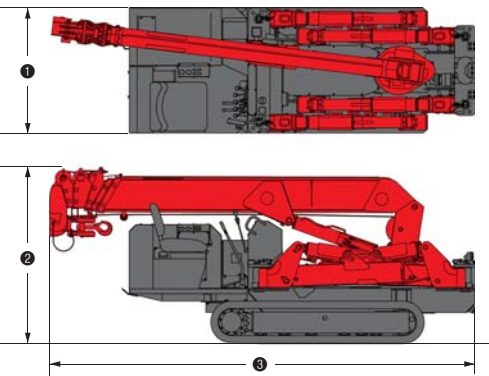
## OUTRIGGER POSITIONS



## CRAWLING GEAR

Crane model	UR-W376C2
Crawling speed [with electric power unit]	0-3.0 km/h, forward / backward [50Hz] 0-1.3 km/h [60Hz] 0-1.5 km/h
Hill climbing ability	23°
Tread length	1750mm
Ground contact pressure [with electric power unit]	36.3 kPa [0.37 kgf/cm <sup>2</sup> ] 37.3 kPa [0.38 kgf/cm <sup>2</sup> ]
Engine manufacturer / model	Yanmar / 3TNV76
Displacement	1115cc
Maximum output	15.17kW(20.6PS) / 2500 rpm, Rated output
Fuel	Diesel
Fuel tank capacity	40 liters
Steering	Hydraulic drive independent of left / right
Starter	Starter motor

## DIMENSIONS



Crane model	UR-W376C2
① Total width	1300mm
② Total height	1800mm
③ Total Length	4340mm
Mass of crane	3860kg [4010kg] [with electric power unit]

## Electric power unit specifications

Rated power	7.5kW (3-phase 4 poles)
Voltage	AC 200V or 400V (50Hz / 60Hz) 3 phase 4P

\*Not included any cables.



# UR-W546C

# UNIC MINI-CRAWLER CRANE

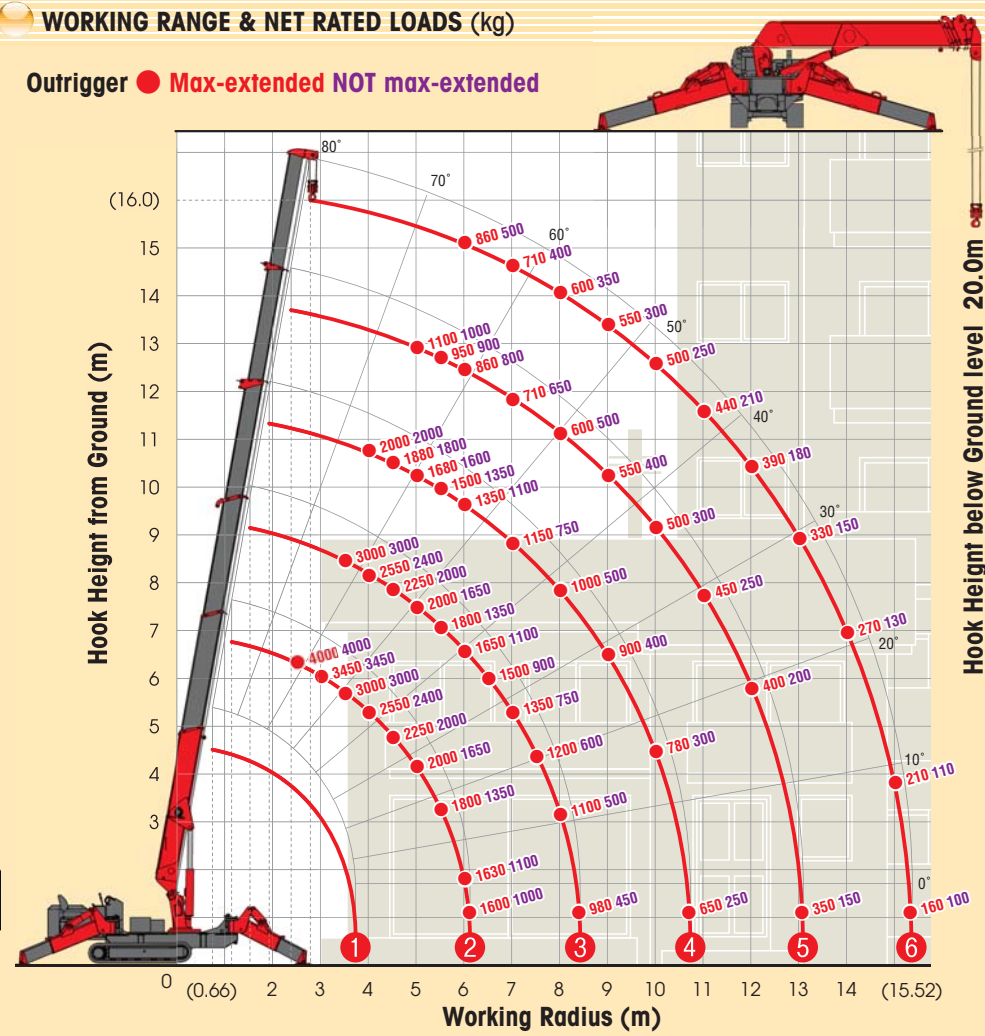
UR-W546C features maximum 4.05t lifting power to allow heavy load lifting operation.

It is capable of lifting maximum 4.05t at 2.5m with a size of only 1400mm wide. It offers a combination of fantastic accessibility and heavy lifting capacity. Standard Automatic stop for overloading device provides the benefit of overloading prevention for safety.



## WORKING RANGE & NET RATED LOADS (kg)

Outrigger ● Max-extended NOT max-extended



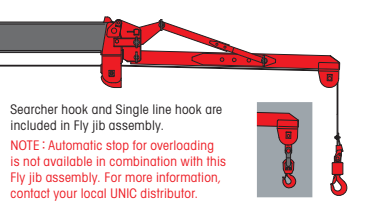
## Automatic stop for overloading (KM-100)



## Three colored lamp



## Fly jib assembly (Options)

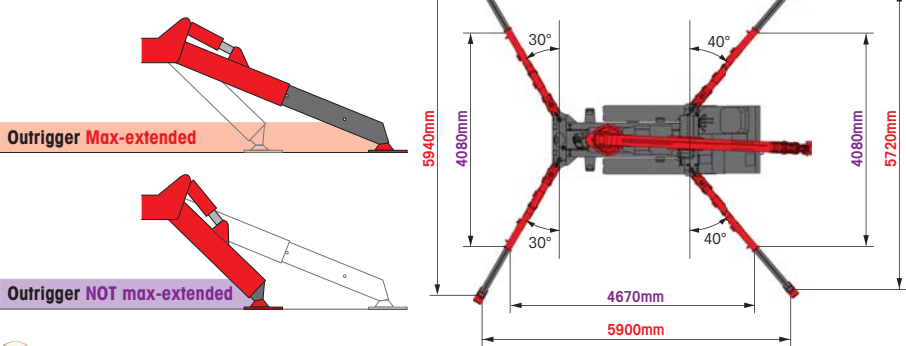


Length	2.0m
Lifting capacity	Max. 700kg
Tilt angles	0°, 20°, 40°, 60°

## SPECIFICATIONS

Crane model	UR-W546C2
Lifting capacity	Max. 4.05t at 2.5m
Working radius	Min. 0.68m, Max. 15.52m
Hook height (Approx.)	Max. 16.0m
Length	Max. 20.0m with 4-part line Min. 3.93m to Max. 15.71m
Boom	Extending speed [with electric power unit] 11.78m / 35.0 sec. [50Hz] 11.78m / 57.0 sec. [60Hz] 11.78m / 48.0 sec. Raising angle / speed [with electric power unit] 0° to 80° / 18.0 sec. [50Hz] 0° to 80° / 30.0 sec. [60Hz] 0° to 80° / 25.0 sec. Structure 6-section box beam type telescoping boom
Winch	Single line speed [with electric power unit] 44.0 m/min (at 4th layer) [50Hz] 34.0 m/min (at 4th layer) [60Hz] 40.0 m/min (at 4th layer) Hook speed [with electric power unit] 11.0 m/min at 4th layer with 4-part line [50Hz] 8.5 m/min (at 4th layer with 4-part line) [60Hz] 10.0 m/min (at 4th layer with 4-part line) Structure Hydraulic motor driven, spur gear reduction, with automatic mechanical brake and wire rope retaining roller Wire rope Construction : XP IWRC 6 x WS(26) / Diameter x Length : 8mm x 91.5m / Breaking strength : 47.1kN [4800 kgf] Hook block 4.00t capacity, 2 sheaves with safety latch
Slewing	Range 360° continuous rotation on a ball bearing race Speed [with electric power unit] 2.5 rpm [50Hz] 2.0 rpm [60Hz] 2.3 rpm Structure Hydraulic motor driven, worm gear reduction, and worm self-locking brake (supported by ball bearings)
Outriggers	Horizontal, Vertical A double acting hydraulic cylinder, direct pushing type (Directly connected with hydraulic automatic lock device)
Hydraulic pump	Type Variable delivery piston pump Rated pressure 21.6 MPa [220 kgf/cm <sup>2</sup> ] Rated delivery 60 liters/min Rated revolution 2500 rpm
Hydraulic oil tank capacity	75 liters
Safety devices	Pressure relief valve for hydraulic circuit / Counterbalance valves for boom raising and boom telescoping cylinders / Pilot-operated check valves for outrigger cylinders (Horizontal) Double pilot-operated check valves for outrigger cylinders (Vertical) / Boom angle indicator with load indicator / Hook safety latch / Automatic mechanical brake for winch Automatic stop for overwinding / Overwinding alarm / Automatic stop for leaving minimum wire rope / Emergency stop button / Inter-lock device of crane and crawling levers Inter-lock device of crane and outriggers / Level / Automatic stop for overloading (KM-100) / Digital load meter / Three colored lamp / Headlight / Boom outrigger monitor lamp

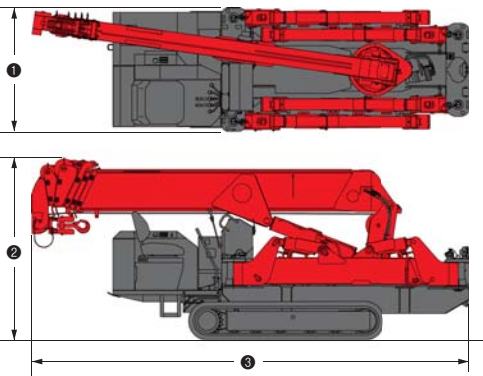
## OUTRIGGER POSITIONS



## CRAWLING GEAR

Crane model	UR-W546C2
Crawling speed [with electric power unit]	0-3.0 km/h, forward / reverse [50Hz] 0-1.3 km/h [60Hz] 0-1.5 km/h
Hill climbing ability	23°
Tread length	1750mm
Ground contact pressure [with electric power unit]	46.1 kPa [0.47 kgf/cm <sup>2</sup> ] 47.1 kPa [0.48 kgf/cm <sup>2</sup> ]
Engine manufacturer / model	Yanmar / 3TNV76
Displacement	1115cc
Maximum output	15.17kW(20.6PS) / 2500 rpm, Rated output
Fuel	Diesel
Fuel tank capacity	40 liters
Steering	Hydraulic drive independent of left / right
Starter	Starter motor

## DIMENSIONS



Crane model	UR-W546C2
1 Total width	1380mm
2 Total height	2035mm
3 Total length	4870mm
Mass of crane	4920kg [5070kg] [with electric power unit]

## Electric power unit specifications

Rated power	7.5kW (3-phase 4 poles)
Voltage	AC 200V or 400V (50Hz / 60Hz) 3 phase 4P

\*Not included any cables.



# UR-W547C

# UNIC MINI-CRAWLER CRANE

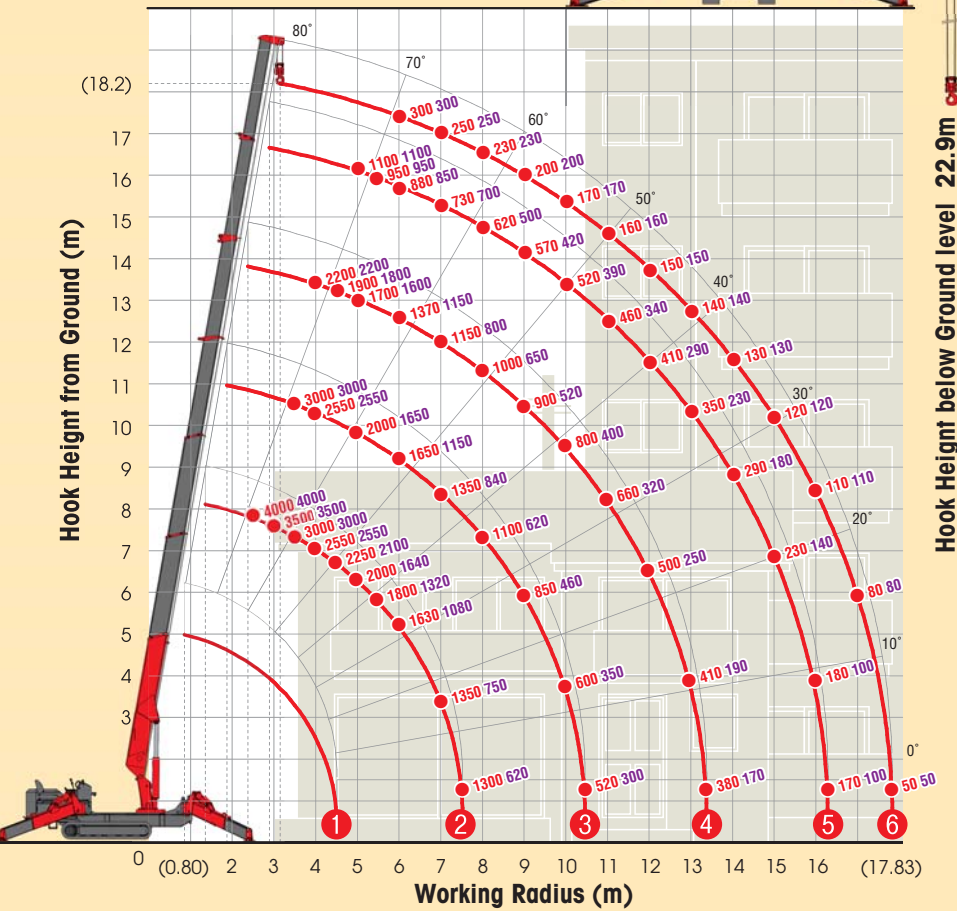
UR-W547C provides maximum hook height of 18.2m with its seven section hydraulic boom.

Its compact 7 section long hydraulic boom provides the wide working radius of 17.83m and fantastic hook height of 18.2m. The long and yet compact boom gains a huge variety of lifting situation.



## WORKING RANGE & NET RATED LOADS (kg)

Outrigger ● Max-extended NOT max-extended



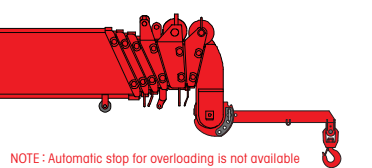
## Automatic stop for overloading (KM-100)



## Three colored lamp



## Searcher hook assembly (Options)



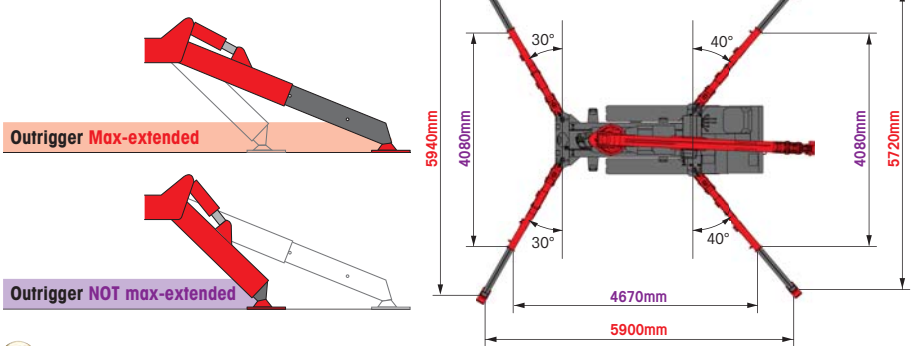
NOTE : Automatic stop for overloading is not available in combination with this Searcher hook assembly. For more information, contact your local UNIC distributor.

Length	800mm
Lifting capacity	Max. 500kg
Tilt angles	0°, 20°, 40°, 60°

## SPECIFICATIONS

Crane model	UR-W547C2
Lifting capacity	Max. 4.05t at 2.5m
Working radius	Min. 0.80m, Max. 17.83m
Hook height (Approx.)	Max. 18.2m
Length	Max. 22.9m with 4-part line Min. 3.99m to Max. 18.02m
Boom	Extending speed [with electric power unit] [50Hz] 14.03m / 35.0 sec. [60Hz] 14.03m / 51.0 sec. Raising angle / speed [with electric power unit] [50Hz] 0° to 80° / 30.0 sec. [60Hz] 0° to 80° / 25.0 sec. Structure 7-section box beam type telescoping boom
Winch	Single line speed [with electric power unit] [50Hz] 56.0 m/min (at 5th layer) [60Hz] 36.0 m/min (at 5th layer) Hook speed [with electric power unit] [50Hz] 14.0 m/min at 5th layer with 4-part line [60Hz] 9.0 m/min (at 5th layer with 4-part line) Structure Hydraulic motor driven, spur gear reduction, with automatic mechanical brake and wire rope retaining roller Wire rope Construction : IWRC L6 x P-WS(26) / Diameter x Length : 8mm x 103.0m / Breaking strength : 53.0kN [5400 kgf] Hook block 4.00t capacity, 2 sheaves with safety latch
Slewing	Range 360° continuous rotation on a ball bearing race Speed [with electric power unit] 2.5 rpm [50Hz] 2.0 rpm [60Hz] 2.3 rpm Structure Hydraulic motor driven, worm gear reduction, and worm self-locking brake (supported by ball bearings)
Outriggers	Horizontal, Vertical A double acting hydraulic cylinder, direct pushing type (Directly connected with hydraulic automatic lock device)
Hydraulic pump	Type Variable delivery piston pump Rated pressure 21.6 MPa [220 kgf/cm <sup>2</sup> ] Rated delivery 60 liters/min Rated revolution 2500 rpm
Hydraulic oil tank capacity	75 liters
Safety devices	Pressure relief valve for hydraulic circuit / Counterbalance valves for boom raising and boom telescoping cylinders / Pilot-operated check valves for outrigger cylinders (Horizontal) Double pilot-operated check valves for outrigger cylinders (Vertical) / Boom angle indicator with load indicator / Hook safety latch / Automatic mechanical brake for winch Automatic stop for overwinding / Overwinding alarm / Automatic stop for leaving minimum wire rope / Emergency stop button / Inter-lock device of crane and crawling levers Inter-lock device of crane and outriggers / Level / Automatic stop for overloading (KM-100) / Digital load meter / Three colored lamp / Headlight / Boom outrigger monitor lamp

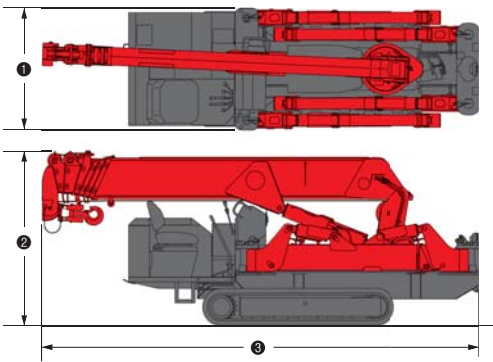
## OUTRIGGER POSITIONS



## CRAWLING GEAR

Crane model	UR-W547C2
Crawling speed [with electric power unit]	0~3.0 km/h, forward / backward [50Hz] 0~1.3 km/h [60Hz] 0~1.5 km/h
Hill climbing ability	23°
Tread length	1750mm
Ground contact pressure [with electric power unit]	47.0 kPa [0.48 kgf/cm <sup>2</sup> ] 48.1 kPa [0.49 kgf/cm <sup>2</sup> ]
Engine manufacturer / model	Yanmar / 3TNV76
Displacement	1115cc
Maximum output	15.17kW(20.6PS) / 2500 rpm, Rated output
Fuel	Diesel
Fuel tank capacity	40 liters
Steering	Hydraulic drive independent of left / right
Starter	Starter motor

## DIMENSIONS



Crane model	UR-W547C2
① Total width	1380mm
② Total height	1980mm
③ Total Length	4955mm
Mass of crane	5020kg [5170kg] [with electric power unit]

## Electric power unit specifications

Rated power	7.5kW (3-phase 4 poles)
Voltage	AC 200V or 400V (50Hz / 60Hz) 3 phase 4P

\*Not included any cables.



# UR-W706C

# UNIC MINI-CRAWLER CRANE

UR-W706C features maximum hook height of 19.5m with its six section hydraulic boom.

With a 6.05t lifting capacity at 3.0m and maximum hook height of 19.5m, it is compact enough to travel through a standard size double doorway. Its compactness and flexibility allow it to travel where no other cranes could have gone before.

Radio remote control



Max 19.5m  
Hook height (Approx.)  
(Above ground level)

Max 6.05t  
×3.0m  
Lifting capacity

Max 18.60m  
Working radius

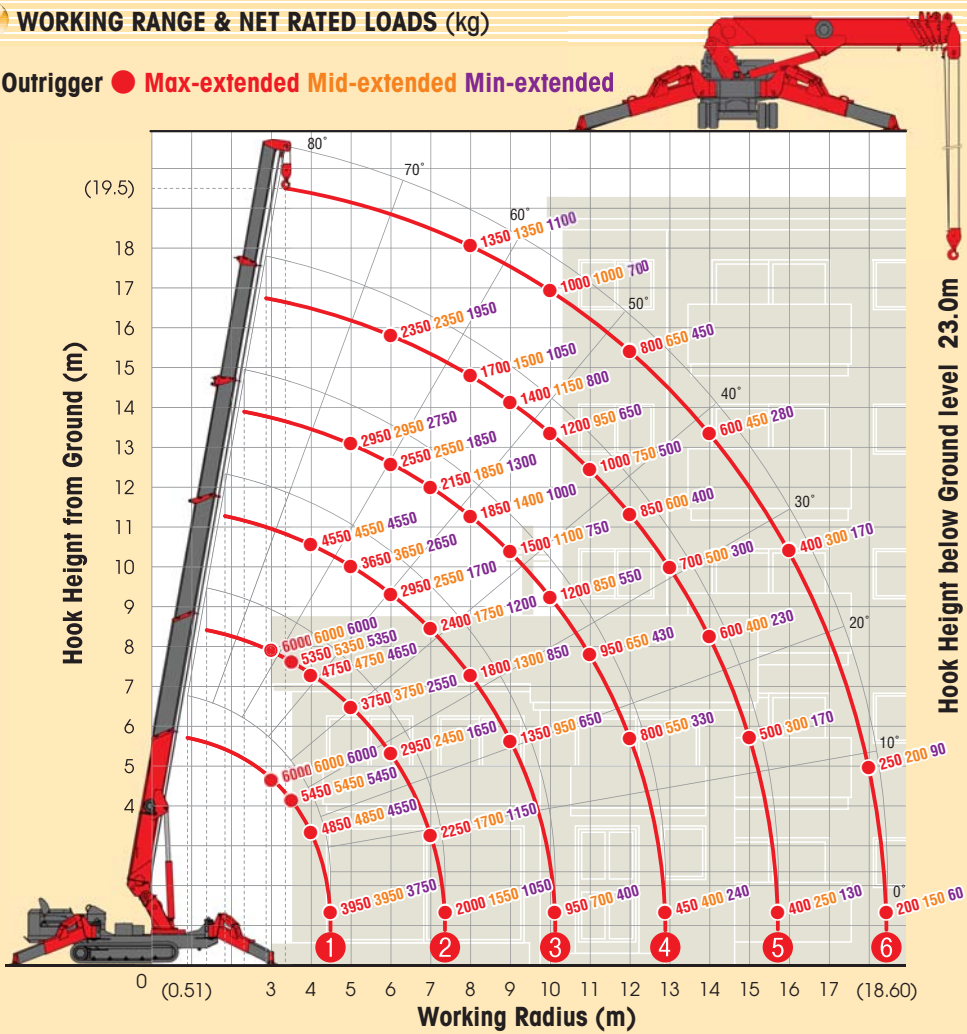
7980kg  
Mass of crane



with electric power unit

## WORKING RANGE & NET RATED LOADS (kg)

Outrigger ● Max-extended Mid-extended Min-extended



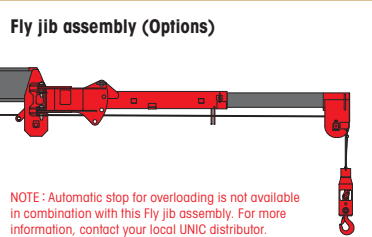
Automatic stop for overloading (ML-300)



Three colored lamp



Fly jib assembly (Options)



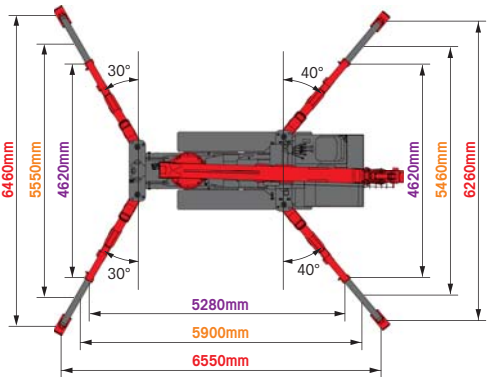
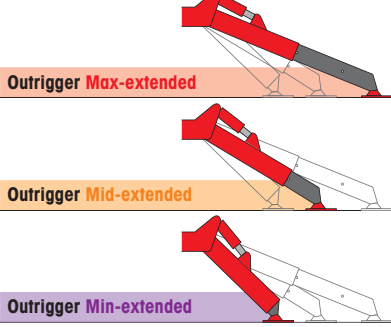
NOTE : Automatic stop for overloading is not available in combination with this Fly jib assembly. For more information, contact your local UNIC distributor.

Length	at 2.11m or at 3.11m
Lifting capacity	Max. 800kg
Tilt angles	0°, 20°, 40°, 60°

## SPECIFICATIONS

Crane model	UR-W706C2
Lifting capacity	Max. 6.05t at 3.0m
Working radius	Min. 0.51m, Max. 18.60m
Hook height (Approx.)	Above ground level Max. 19.5m Below ground level Max. 23.0m with 4-part line
Length	Min. 4.80m to Max. 19.20m
Boom	Extending speed [with electric power unit] [50Hz] 14.40m / 52.0 sec. [60Hz] 14.40m / 90.0 sec. Raising angle / speed [with electric power unit] [50Hz] 0° to 80° / 16.0 sec. [60Hz] 0° to 80° / 37.0 sec. Structure 6-section box beam type telescoping boom
Winch	Single line speed [with electric power unit] [50Hz] 44.0 m/min (at 4th layer) [60Hz] 17.7 m/min (at 4th layer) Hook speed [with electric power unit] [50Hz] 11.0 m/min at 4th layer with 4-part line [60Hz] 4.4 m/min (at 4th layer with 4-part line) Structure Hydraulic motor driven, planetary gear reduction, with automatic mechanical brake and counterbalance valve and wire rope retaining roller Wire rope Construction : IWRC 6 XP F(29) / Diameter x Length : 10mm x 111.0m / Breaking strength : 92.2kN [9400 kgf] Hook block 6.00t capacity, 2 sheaves with safety latch
Slewing	Range 360° continuous rotation on a ball bearing race Speed [with electric power unit] 2.5 rpm [50Hz] 1.8 rpm [60Hz] 1.8 rpm Structure Hydraulic motor driven, worm gear reduction, spur gear reduction, and worm self-locking brake (supported by ball bearings)
Outriggers	Horizontal, Vertical A double acting hydraulic cylinder, direct pushing type (Directly connected with hydraulic automatic lock device)
Hydraulic pump	Type Variable delivery piston pump Rated pressure 24.5 MPa [250 kgf/cm <sup>2</sup> ] Rated delivery 81 liters/min Rated revolution 2500 rpm
Hydraulic oil tank capacity	120 liters
Safety devices	Pressure relief valve for hydraulic circuit / Counterbalance valves for boom raising and boom telescoping cylinders / Pilot-operated check valves for outrigger cylinders (Horizontal) Double pilot-operated check valves for outrigger cylinders (Vertical) / Boom angle indicator with load indicator / Hook safety latch / Automatic mechanical brake for winch Automatic stop for overwinding / Overwinding alarm / Automatic stop for leaving minimum wire rope / Emergency stop button / Inter-lock device of crane and crawling levers Inter-lock device of crane and outriggers / Level / Automatic stop for overloading (ML-300) / Digital load meter / Three colored lamp / Headlight / Boom outrigger monitor lamp

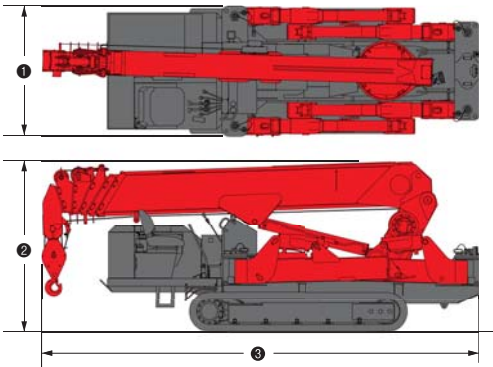
## OUTRIGGER POSITIONS



## CRAWLING GEAR

Crane model	UR-W706C2
Crawling speed [with electric power unit]	0-2.9 km/h, forward / backward [50Hz] 0-1.0 km/h [60Hz] 0-1.2 km/h
Hill climbing ability	23°
Tread length	2275mm
Ground contact pressure [with electric power unit]	43.2 kPa [0.44 kgf/cm <sup>2</sup> ] 44.1 kPa [0.45 kgf/cm <sup>2</sup> ]
Engine manufacturer / model	Mitsubishi / S4L2
Displacement	1758cc
Maximum output	23.00kW(31.3PS) / 2500 rpm, Rated output
Fuel	Diesel
Fuel tank capacity	74 liters
Steering	Hydraulic drive independent of left / right
Starter	Starter motor

## DIMENSIONS



Crane model	UR-W706C2
① Total width	1670mm
② Total height	2185mm
③ Total Length	5610mm
Mass of crane	7920kg [8080kg] [with electric power unit]

## Electric power unit specifications

Rated power	7.5kW (3-phase 4 poles)
Voltage	AC 200V or 400V (50Hz / 60Hz) 3 phase 4P

\*Not included any cables.



# UR-W1006C

The mightiest Mini Crawler Cranes in the world, UR-W1006C boasts an unrivalled 10.14t lifting capacity.

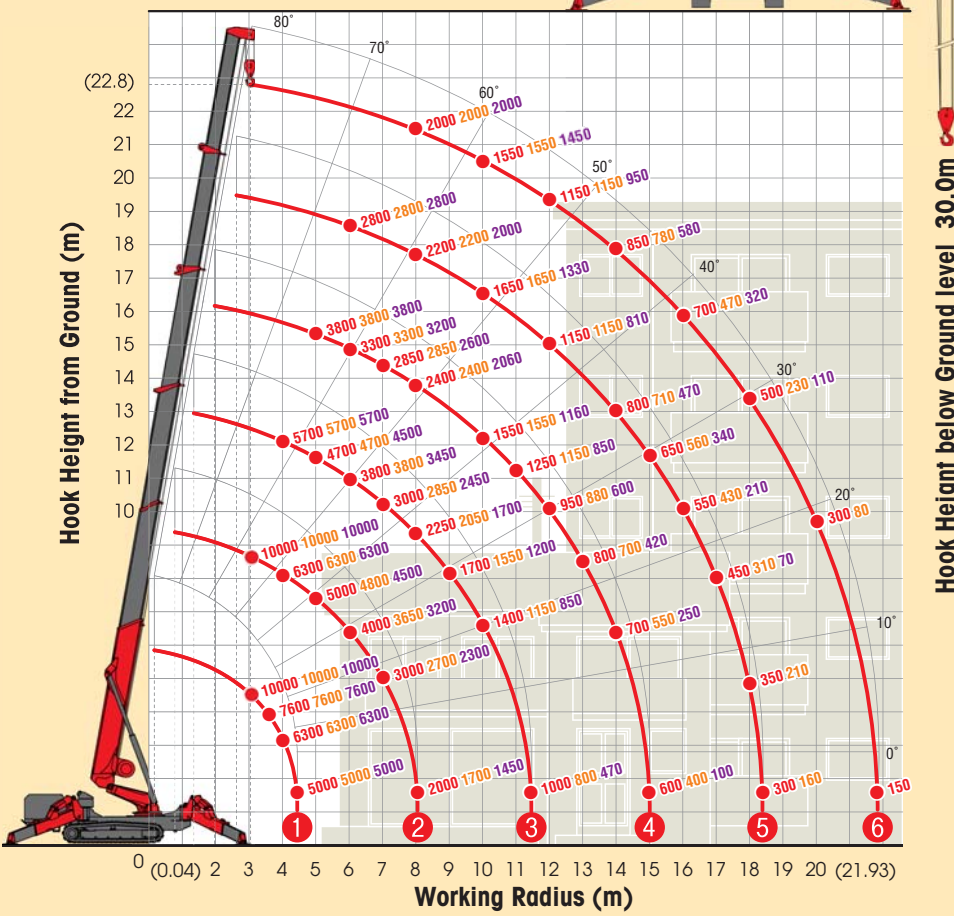
UR-W1006C offers a generous 30.7m lifting height and 24.3m working radius, yet at only 2000mm wide still retains class-beating minimal dimensions for working in restricted areas. UR-W1006C also has a Pick & Carry function which enables it to travel with loads up to 1500kg. The full interlocking system and configurable outriggers ensures maximum stability on uneven ground surfaces.



## UNIC MINI-CRAWLER CRANE

### WORKING RANGE & NET RATED LOADS (kg)

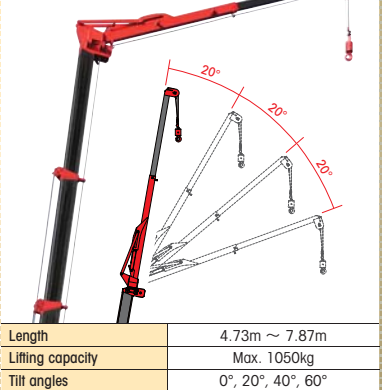
Outrigger ● Max-extended Mid-extended Min-extended



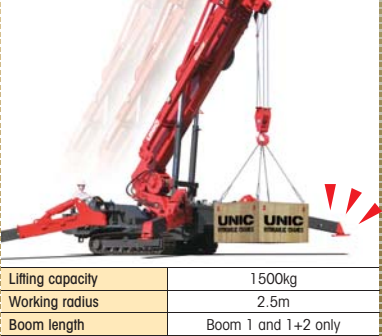
### Safe load indicator



### Fly jib assembly



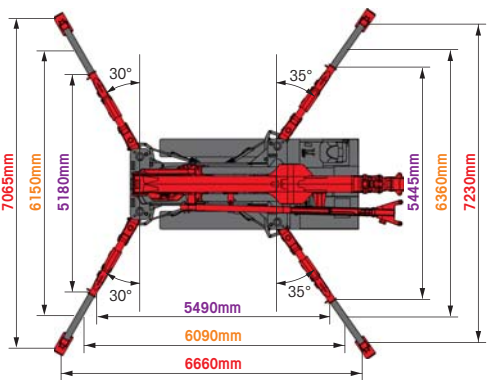
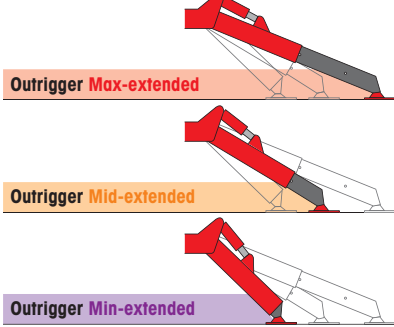
### Pick & Carry



### SPECIFICATIONS

Crane model	UR-W1006C2
Lifting capacity	Max. 10.14t at 3.0m : with Fly jib assembly Max. 1.05t at 9.7m (boom angle 70° and jib tilt angle 0°)
Working radius	Min. 0.04m, Max. 21.93m : with Fly jib assembly Max. 24.30m
Hook height (Approx.)	Above ground level Max. 22.8m : with Fly jib assembly Max. 30.7m Below ground level Max. 30.0m with 4-part line : with Fly jib assembly Max. 123.0m with 1-part line
Length	Min. 5.75m to Max. 23.10m
Boom	Extending speed 17.35m / 88.0 sec. [with electric power unit] [50Hz] 17.35m / 123.0 sec. [60Hz] 17.35m / 103.0 sec. Raising angle / speed 0° to 80° / 44.0 sec. [with electric power unit] [50Hz] 0° to 80° / 80.0 sec. [60Hz] 0° to 80° / 67.0 sec. Structure 6-section box beam type telescoping boom
Winch	Single line speed 40.0 m/min (at 4th layer) [with electric power unit] [50Hz] 20.8 m/min (at 4th layer) [60Hz] 24.8 m/min (at 4th layer) Hook speed 10.0 m/min at 4th layer with 4-part line [with electric power unit] [50Hz] 5.2 m/min (at 4th layer with 4-part line) [60Hz] 6.2 m/min (at 4th layer with 4-part line) Structure Hydraulic motor driven, planetary gear reduction, with automatic mechanical brake and counterbalance valve and wire rope retaining roller Wire rope Construction : XP IWRC 6 x WS(31) / Diameter x Length : 13mm x 140.0m / Breaking strength : 131.0kN [13400 kgf] Hook block 10.00t capacity, 3 sheaves with safety latch
Slewing	Range 360° continuous rotation on a ball bearing race Speed [with electric power unit] 1.3 rpm [50Hz] 1.2 rpm [60Hz] 1.2 rpm Structure Hydraulic motor driven, worm gear reduction, spur gear reduction, and worm self-locking brake (supported by ball bearings)
Outriggers	Horizontal, Vertical / Position A double acting hydraulic cylinder, direct pushing type (Directly connected with hydraulic automatic lock device) / A double acting hydraulic cylinder with link system Type Variable delivery piston pump Rated pressure 27.5 MPa [280 kgf/cm <sup>2</sup> ] Rated delivery 105 liters/min Rated revolution 2500 rpm Hydraulic oil tank capacity 215 liters
Safety devices	Pressure relief valve for hydraulic circuit / Counterbalance valves for boom raising and boom telescoping cylinders / Pilot-operated check valves for outrigger cylinders (Horizontal) Double pilot-operated check valves for outrigger cylinders (Vertical) / Boom angle indicator with load indicator / Hook safety latch / Automatic mechanical brake for winch Automatic stop for overwinding / Overwinding alarm / Automatic stop for leaving minimum wire rope / Emergency stop button / Inter-lock device of crane and crawling levers Inter-lock device of crane and outriggers / Level / Safe load indicator / Three colored lamp / Headlight / Boom outrigger monitor lamp

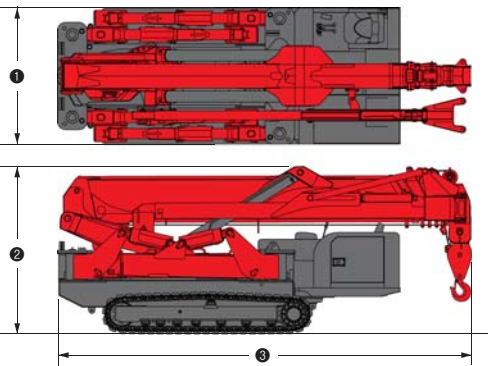
### OUTRIGGER POSITIONS



### CRAWLING GEAR

Crane model	UR-W1006C2
Crawling speed	0-2.6 km/h, forward / backward [with electric power unit] [50Hz] 0-1.3 km/h [60Hz] 0-1.5 km/h
Hill climbing ability	23°
Tread length	2515mm
Ground contact pressure	67.3 kPa [0.69 kgf/cm <sup>2</sup> ] [with electric power unit] 68.2 kPa [0.70 kgf/cm <sup>2</sup> ]
Engine manufacturer / model	Yanmar / 4TNV88
Displacement	2189cc
Maximum output	29.80kW(40.5PS) / 2500 rpm, Continuous rated output
Fuel	Diesel
Fuel tank capacity	75 liters
Steering	Hydraulic drive independent of left / right
Starter	Starter motor

### DIMENSIONS



Crane model	UR-W1006C2
① Total width	2000mm
② Total height	2460mm
③ Total Length	6060mm
Mass of crane	13800kg [14000kg] [with electric power unit]

### Electric power unit specifications

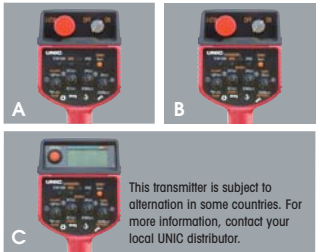
Rated power	11.0kW (3-phase 4 poles)
Voltage	AC 400/400-440V (50Hz / 60Hz) 3 phase 4P

\*Not included any cables.



Standard equipments and Options

UNIC MINI-CRAWLER CRANE



1 Radio remote control  
A W094C, W245C, W295C  
B W376C, W546C, W547C, W706C  
C W1006C



2 Cable remote control



3 Load meter



4 Digital load meter  
Load indication is each 20kg (0.02t).



5 Automatic stop for overloading  
KM-100 W376C, W546C, W547C



6 Automatic stop for overloading  
ML-300 W706C



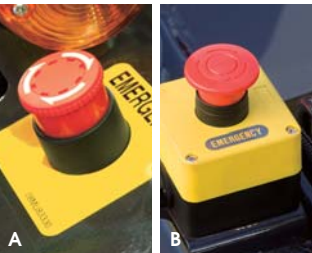
7 Safe load indicator



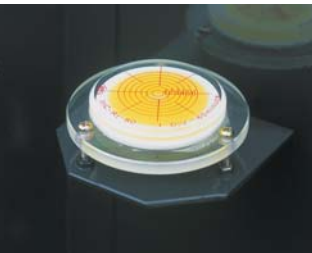
8 Automatic stop for overwinding



9 Automatic stop for leaving minimum wire rope



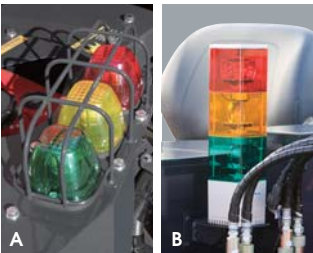
10 Emergency stop button  
A W094C, W245C, W295C  
B W376C, W546C, W547C, W706C, W1006C



11 Level



12 Turn over prevention device



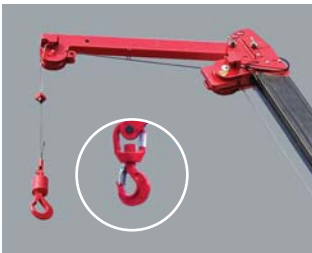
13 Three colored lamp  
A W295C  
B W376C, W546C, W547C, W706C, W1006C



14 Boom outrigger monitor lamp



15 Searcher hook assembly



16 Fly jib assembly



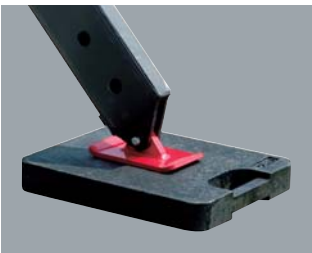
17 Single line hook



18 Working light



19 Headlight



20 Outrigger mats



21 Black crawler belt



22 White crawler belt  
23 White crawler belt (as spare)



24 Rubber Pad



25 20M cable for motor (200V)  
26 20M cable for motor (400V)

STANDARD EQUIPMENTS / OPTION [★ Standard ● Option — Not available]

Crane model	UR-W094C	UR-W245C	UR-W295C		UR-W295C1		UR-W376C2		UR-W546C2		UR-W547C2		UR-W706C2		UR-W1006C2		Crane model
	UR-W094CP2E	UR-W245CP2A	UR-W295CP2A	UR-W295CP2AM	UR-W295C1A	UR-W295C1AM	UR-W376C2A	UR-W376C2AM	UR-W546C2A	UR-W546C2AM	UR-W547C2A	UR-W547C2AM	UR-W706C2A	UR-W706C2AM	UR-W1006C2A	UR-W1006C2AM	
Engine manufacturer / model	Mitsubishi / GB300LE	Mitsubishi / GB400LE	Mitsubishi / GB400LE	Mitsubishi / GB400LE	Kubota / Z482-E3B	Kubota / Z482-E3B	Yanmar / 3TNV76	Yanmar / 3TNV76	Yanmar / 3TNV76	Yanmar / 3TNV76	Yanmar / 3TNV76	Yanmar / 3TNV76	Mitsubishi / S4L2	Mitsubishi / S4L2	Yanmar / 4TNV88	Yanmar / 4TNV88	Engine manufacturer / model
Fuel	Petrol	Petrol	Petrol	Petrol	Diesel	Diesel	Diesel	Diesel	Diesel	Diesel	Diesel	Diesel	Diesel	Diesel	Diesel	Diesel	Fuel
Electric motor	—	—	—	AC 200V or 400V	—	AC 200V or 400V	—	AC 200V or 400V	—	AC 200V or 400V	—	AC 200V or 400V	—	AC 200V or 400V	—	AC 400/400-440V	Electric motor
1 Radio remote control	★	★	★	★	★	★	★	★	★	★	★	★	★	★	★	★	Radio remote control
2 Cable remote control	●	●	●	●	●	●	●	●	●	●	●	●	●	●	●	●	Cable remote control
3 Load meter	★	★	★	★	★	★	—	—	—	—	—	—	—	—	—	—	Load meter
4 Digital load meter	—	—	●	●	●	●	★	★	★	★	★	★	★	★	★	★	Digital load meter
5 Automatic stop for overloading (KM-100)	—	—	●	●	●	●	★	★	★	★	★	★	—	—	—	—	Automatic stop for overloading (KM-100)
6 Automatic stop for overloading (ML-300)	—	—	—	—	—	—	—	—	—	—	—	—	★	★	—	—	Automatic stop for overloading (ML-300)
7 Safe load indicator	—	—	—	—	—	—	—	—	—	—	—	—	—	—	★	★	Safe load indicator
8 Automatic stop for overwinding	★	★	★	★	★	★	★	★	★	★	★	★	★	★	★	★	Automatic stop for overwinding
9 Automatic stop for leaving minimum wire rope	★	★	★	★	★	★	★	★	★	★	★	★	★	★	★	★	Automatic stop for leaving minimum wire rope
10 Emergency stop button	★	★	★	★	★	★	★	★	★	★	★	★	★	★	★	★	Emergency stop button
11 Level	★	★	★	★	★	★	★	★	★	★	★	★	★	★	★	★	Level
12 Turn over prevention device	—	—	★	★	★	★	●	●	—	—	—	—	—	—	—	—	Turn over prevention device
13 Three colored lamp	—	—	●	●	●	●	★	★	★	★	★	★	★	★	★	★	Three colored lamp
14 Boom outrigger monitor lamp	—	—	—	—	—	—	★	★	★	★	★	★	★	★	★	★	Boom outrigger monitor lamp
15 Searcher hook assembly	—	—	●	●	●	●	●	●	●	●	●	●	—	—	—	—	Searcher hook assembly
16 Fly jib assembly	—	—	●	●	●	●	●	●	●	●	—	—	●	●	★	★	Fly jib assembly
17 Single line hook	—	—	●	●	●	●	—	—	—	—	—	—	—	—	—	—	Single line hook
18 Working light	●	●	●	●	●	●	●	●	●	●	●	●	●	●	—	—	Working light
19 Headlight	—	—	—	—	—	—	★	★	★	★	★	★	★	★	★	★	Headlight
20 Outrigger mats	●	●	●	●	●	●	●	●	●	●	●	●	●	●	—	—	Outrigger mats
21 Black crawler belt	★	★	★	★	★	★	★	★	★	★	★	★	★	★	—	—	Black crawler belt
22 White crawler belt	●	●	●	●	●	●	●	●	—	—	—	—	—	—	—	—	White crawler belt
23 White crawler belt (as spare)	●	●	●	●	●	●	●	●	—	—	—	—	—	—	—	—	White crawler belt (as spare)
24 Rubber Pad	—	—	—	—	—	—	—	—	—	—	—	—	—	—	★	★	Rubber Pad
25 20M cable for motor (200V)	—	—	—	●	—	●	—	●	—	●	—	●	—	●	—	—	20M cable for motor (200V)
26 20M cable for motor (400V)	—	—	—	●	—	●	—	●	—	●	—	●	—	●	—	—	20M cable for motor (400V)





# UNIC

**FURUKAWA UNIC CORPORATION**

5-3, Nihonbashi 1-chome, Chuo-ku, TOKYO 103-0027 JAPAN

<http://www.furukawaunic.co.jp/english/>

**Phone: (81-3) 3231-8613 / Facsimile: (81-3) 3231-8261**

Authorized **UNIC** distributor