

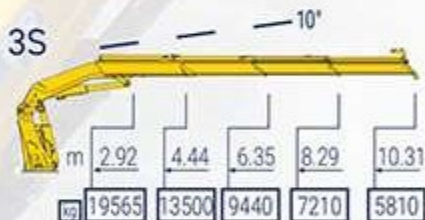


# 685 FEATURES & BENEFITS

## PACKED WITH ADVANTAGES:

- THE 685 **STANDS APART IN THE 60T/M CLASS OF CRANES**. RANGING FROM 3 TO 9 BOOM EXTENSIONS ON THE CRANE AND EVEN 8 BOOM EXTENSIONS WITH A 4 BOOM FLY-JIB, THERE IS **A CONFIGURATION TO SUIT ALL APPLICATIONS**. HEAVY AND LIGHT DUTY FLY-JIBS ALONG WITH WINCH CAPACITY UP TO 3.5 TONNE, THE 685 IS THE MOST VERSATILE LARGE CAPACITY CRANE IN THE CLASS.
- A **PERFECTLY OPTIMISED DESIGN** OF ALL COMPONENTS MAKE IT POSSIBLE TO ACHIEVE UNPARALLELED POWER TO WEIGHT RATIO
- THESE RESULTS ONLY POSSIBLE WITH THE **SOPHISTICATED** PROGRESS 2.0 ELECTRONIC CONTROL SYSTEM

**WATCH VIDEO:**  
 OVERVIEW **QUICKFASTER**



6S+JIB 6S HEAVY DUTY



