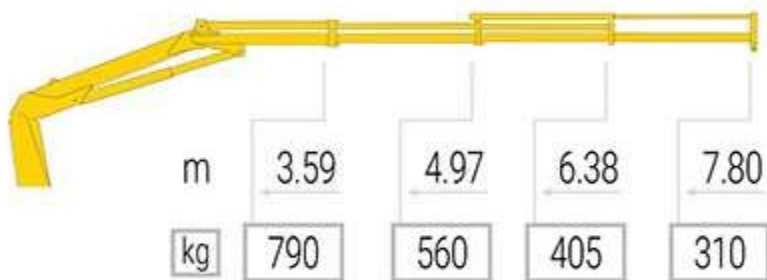




**“BEYOND ANY OBSTACLE”**

**35** This crane has the longest outreach in its category, which makes it possible to have a perfect coverage of the work area, without having to reposition the truck. The lifting angle of the main boom of 83° makes it possible to use the full length of the boom. The accurate design of boom profile, together with the use of high tensile strength steel makes the crane achieve a power/weight ratio among the best in the category. The installation on 3,5 ton trucks makes it possible to maintain a significant residual capacity even with tipper body.

**3S**



MODEL	35-3S
WEIGHT	535
TM	2.84
SLEW ANGLE	360
HEIGHT	1705
WIDTH	2040
INSTALLATION SPACE	675
STABILISER WIDTH	3120

STANDARD

OPTIONAL

