



MP.0.182 UK 10/2014

MAXILIFT. EFFICIENCY ON THE WATER

Marinized treatment specifications

- Shot blasting of structural elements
- **Painting:**
 - Organic epoxy galvanizing primer 30-40 μ
 - Bi-component epoxy priming coat 60-70 μ
 - Bi-component polyurethan final painting 60-70 μ
- NITOX treatment on link pins
- Rods treatment with guarantee of 250 hours in salt spray test
- Anti-corrosion treatment or painting on all hydraulic valves
- Stainless steel piping
- "Offshore" hoses and stainless steel hose terminals
- Stainless steel fittings
- 500 hours zinc based anticorrosion treatment protection

Technical data not binding

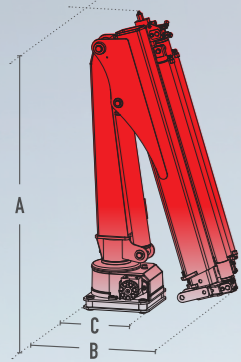


MAXILIFT. EFFICIENCY ON THE WATER

Maxilift: Special range of hydraulic cranes ideal for marine applications. Light, easy to use and install, they grant high protection against corrosion and long lasting lifetime.

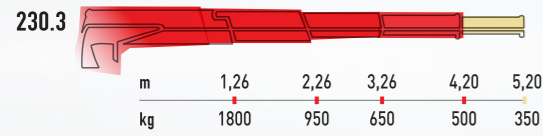
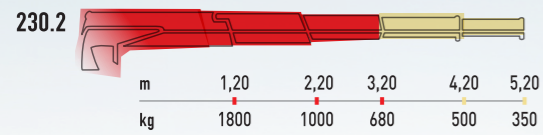


SPECIFICATIONS

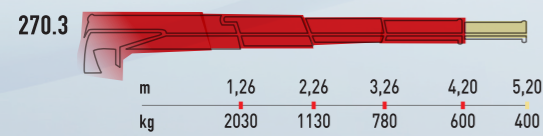


| Mod. | Dimensions mm | | | Lifting capacity kNm | Slewing angle (worm screw) | Max angle slope | Basic crane weight kg |
|-------|---------------|------|-----|----------------------|----------------------------|-----------------|-----------------------|
| | A | B | C | | | | |
| 230 | 1420 | 790 | 310 | 22 | 360° (330°) | 5° | 225-275 |
| 270 | 1420 | 790 | 310 | 25 | 360° (330°) | 5° | 225-275 |
| 270 L | 1510 | 1130 | 310 | 25 | 360° (330°) | 5° | 235-290 |
| 330 | 1550 | 820 | 370 | 32 | 360° (330°) | 5° | 270-345 |
| 380 | 1630 | 870 | 370 | 37 | 360° (330°) | 5° | 310-395 |

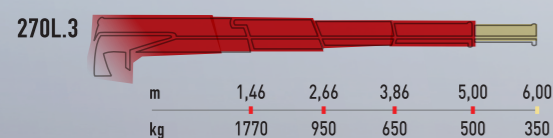
230



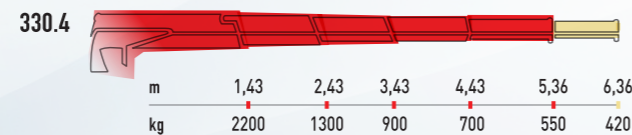
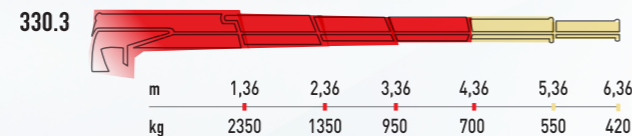
270



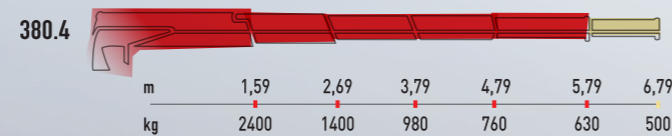
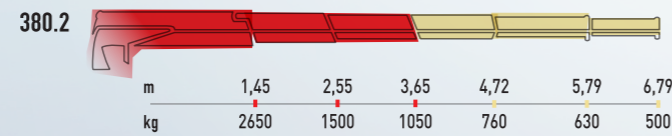
270 L



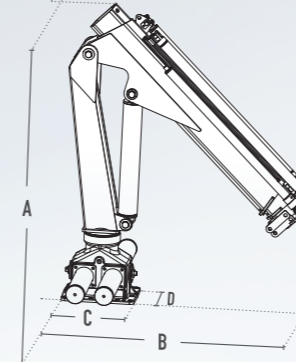
330



380



SPECIFICATIONS

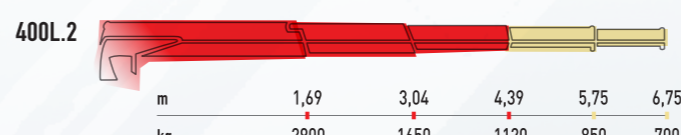


| Mod. | Dimensions mm | | | | Lifting capacity kNm | Slewing angle (double rack) | Max angle slope | Basic crane weight kg |
|----------|---------------|------|-----|-----|----------------------|-----------------------------|-----------------|-----------------------|
| | A | B | C | D | | | | |
| ML 400 | 1830 | 1280 | 450 | 350 | 42 | 360° (295°) | 15° | 460-500 |
| ML 400 L | 1800 | 1450 | 450 | 350 | 42 | 360° (295°) | 15° | 490-540 |
| ML 500 | 1830 | 1280 | 450 | 350 | 48 | 360° (295°) | 15° | 470-510 |
| ML 500 L | 1800 | 1450 | 450 | 350 | 48 | 360° (295°) | 15° | 500-550 |

400



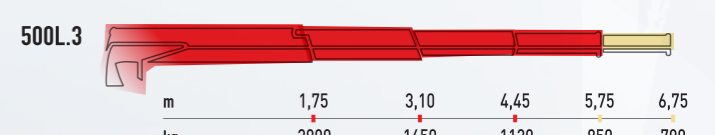
400 L



500

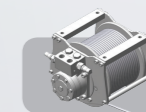


500 L



Hydraulic extensions

Optional manual extensions



Hydraulic winch on request