

Fig. Pict. 17

Head Office:

ABN: 68 140 091 158

P: 08 8326 6300 | F: 08 8326 4685

E: admin@maxilift.com.au

A: 12-16 Dorset Street, Lonsdale, SA, 5160

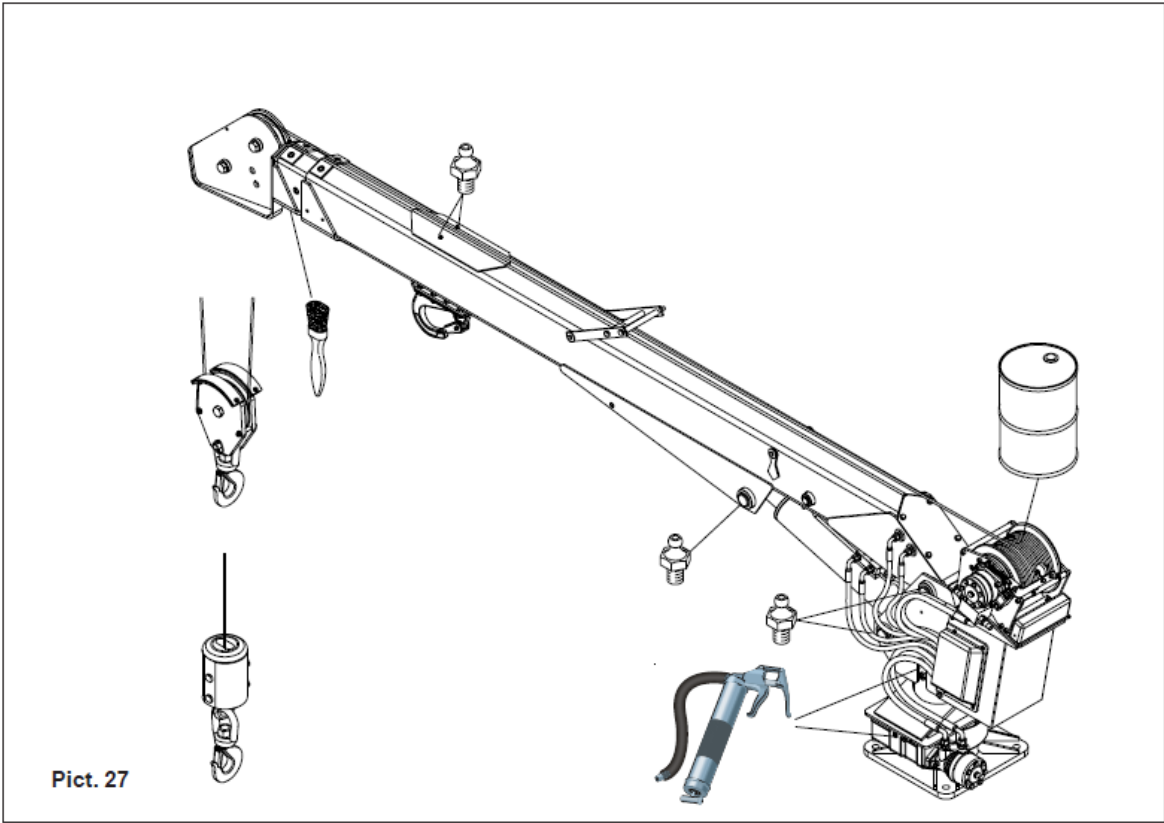
W: www.maxilift.com.au



Lubricant Type	Grade
Hydraulic Oil	ISO 46
Winch Gearbox	HLP ISO VG 46
General Grease	MP / EP2
Slew Gear Grease	WINN'S GS-80 / MOBILTAC-D / ESSO EDO-501

Cobra

Lubricant Type	Grade
Hydraulic Oil	ISO 46
Winch Gearbox	HLP ISO VG 46
General Grease	EP2
Slew Gear Grease	WINN'S GS-80 / MOBILTAC-D / ESSO EDO-501



**Head Office:**

ABN: 68 140 091 158

P: 08 8326 6300 | F: 08 8326 4685

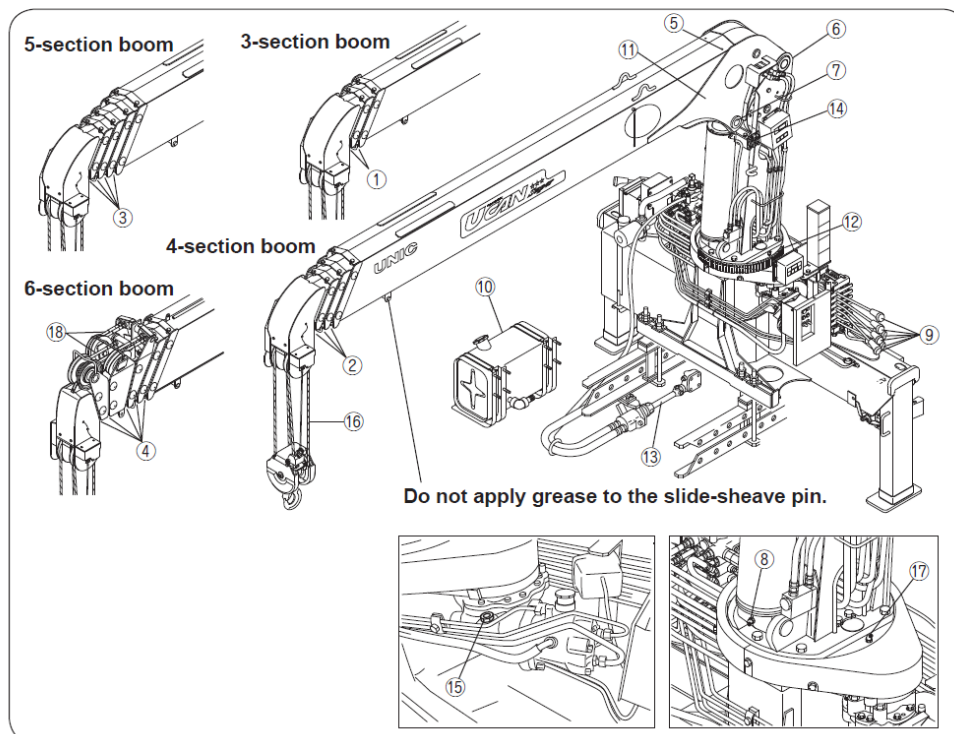
E: admin@maxilift.com.au

A: 12-16 Dorset Street, Lonsdale, SA, 5160

W: www.maxilift.com.au

**Unic**

Lubricant Type	Grade
Hydraulic Oil	ISO 46
Winch Gearbox Oil	15W-40
Slew Gear Oil	API Service GL-4 Gear Oil (Chevron Thuban GL4 90 / Shell Spirax EP90)
Molybdenum Grease	NLGI No.2
Chassis Grease	NLGI No.2

**◆2. Lubrication chart**

Service interval	Part to be lubricate	No. of part	Lubricant	Tool
Daily	① Boom slide plate (Underside/sides of boom sections ②, ③) 3-section boom	2	Molybdenum grease	Manual application
	② Boom slide plate (Underside/sides of boom sections ②, ③, ④) 4-section boom	3	Molybdenum grease	Manual application
	③ Boom slide plate (Underside/sides of boom sections ②, ③, ④, ⑤) 5-section boom	4	Molybdenum grease	Manual application
	④ Boom slide plate (Underside/sides of boom sections ②, ③, ④, ⑤, ⑥) 6-section boom	5	Molybdenum grease	Manual application
	⑤ Boom slide plate (Upper side of boom section ①)	2	Molybdenum grease	Grease pump
	⑥ Boom foot pin	1	Chassis grease	Grease pump
	⑦ Upper support pin of derrick cylinder	1	Chassis grease	Grease pump
	⑧ Lower support pin of derrick cylinder	1	Chassis grease	Grease pump
	⑨ Control lever (pins on both sides and bearing)	2	Chassis grease	Manual application
	⑩ Oil tank (59L)	1	Hydraulic oil (up to middle of level gauge)	
Weekly	⑪ Winch drum gear	1	Chassis grease	Grease pump
	⑫ Slewing gear (to gear-teeth)	1	Chassis grease	Manual application
	⑬ Propeller shaft	3	Chassis grease	Grease pump
Monthly	⑭ Winch reduction gear (approx.1.0L)	1	Gear oil	
	⑮ Slewing reduction gear (approx.1.2L)	1	Gear oil	
	⑯ Wire rope	1	Rope grease	Spray gun
	⑰ Slewing bearings	2	Chassis grease	Grease pump
	⑱ Wire rope for boom extension		Rope grease	Spray gun

**Head Office:**

ABN: 68 140 091 158

P: 08 8326 6300 | F: 08 8326 4685

E: admin@maxilift.com.au

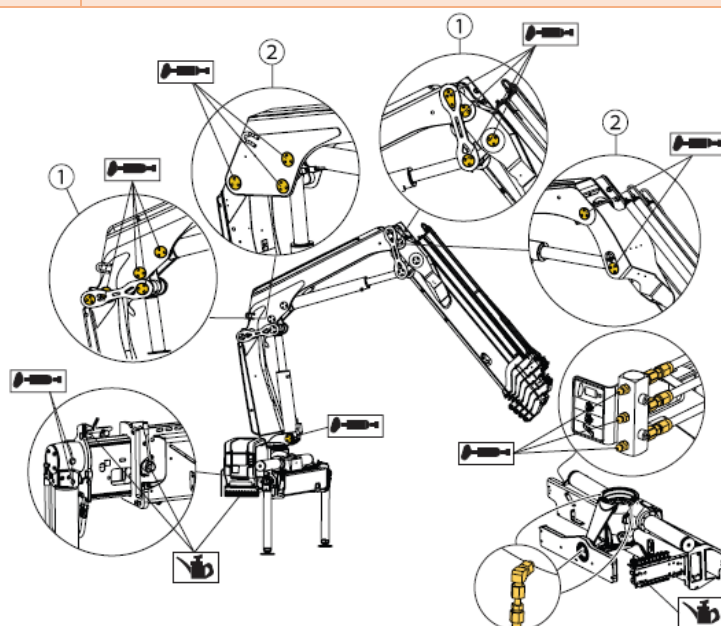
A: 12-16 Dorset Street, Lonsdale, SA, 5160



W: www.maxilift.com.au

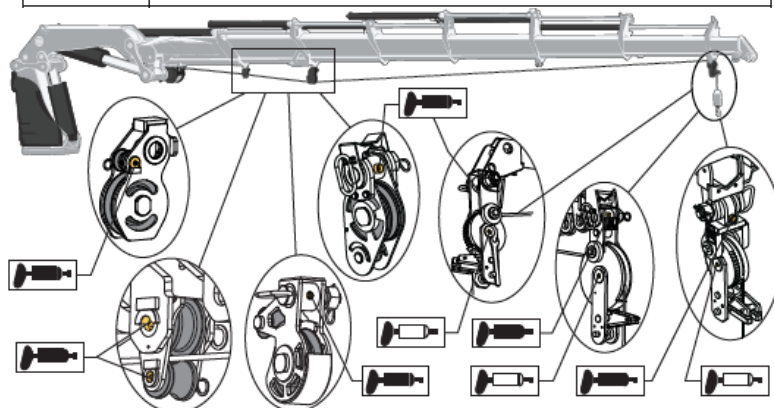
**HIAB**



NOTE : DO NOT USE MOLYBDENUM GREASE ON HIAB CRANES

Lubricant Type	Grade
Hydraulic Oil	ISO 46 - See below for temperature specific grade
Slew Gear Oil	Hypoid Oil – API GL-5 / SAE J2360 – SAE-80W-90
Grease	Lithium Based Grease with EP additives – BP LS EP2 / ESSO UNIWAY EP2 N



	Lubricate after every 16 hours of use.
	Lubricate after every 50 hours of use.



	Lubricate after every 16 hours of use.
	Lubricate every 3 months. If the hoist is used less frequently than 3 months, lubricate before every use.

**Head Office:**

ABN: 68 140 091 158

P: 08 8326 6300 | F: 08 8326 4685

E: admin@maxilift.com.au

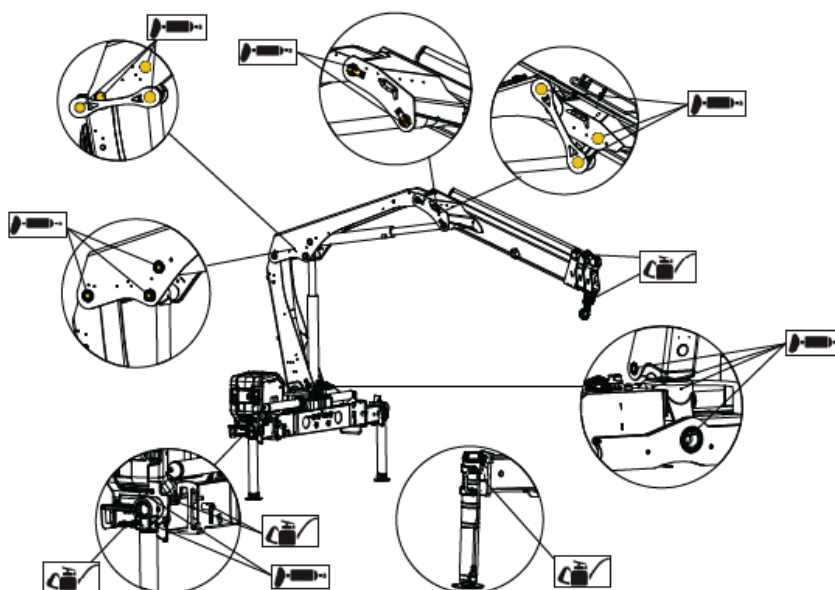
A: 12-16 Dorset Street, Lonsdale, SA, 5160

W: www.maxilift.com.au

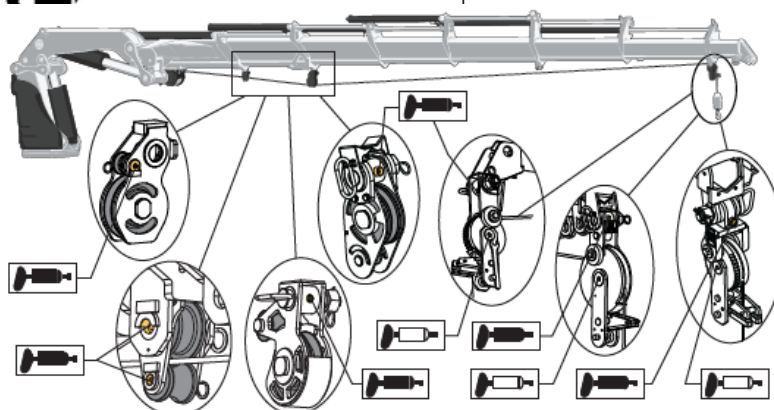
**Effer Space**

NOTE : DO NOT USE MOLYBDENUM GREASE ON EFFER SPACE CRANES

Lubricant Type	Grade
Hydraulic Oil	ISO 46 - See below for temperature specific grade
Slew Gear Oil	Hypoid Oil – API GL-5 / SAE J2360 – SAE-80W-90
Grease	Lithium Based Grease with EP additives – BP LS EP2 / ESSO UNIWAY EP2 N



	Lubricate after every 16 hours of use.
	Lubricate after every 50 hours of use.



	Lubricate after every 16 hours of use.
	Lubricate every 3 months. If the hoist is used less frequently than 3 months, lubricate before every use.



Head Office:

ABN: 68 140 091 158

P: 08 8326 6300 | F: 08 8326 4685

E: admin@maxilift.com.au

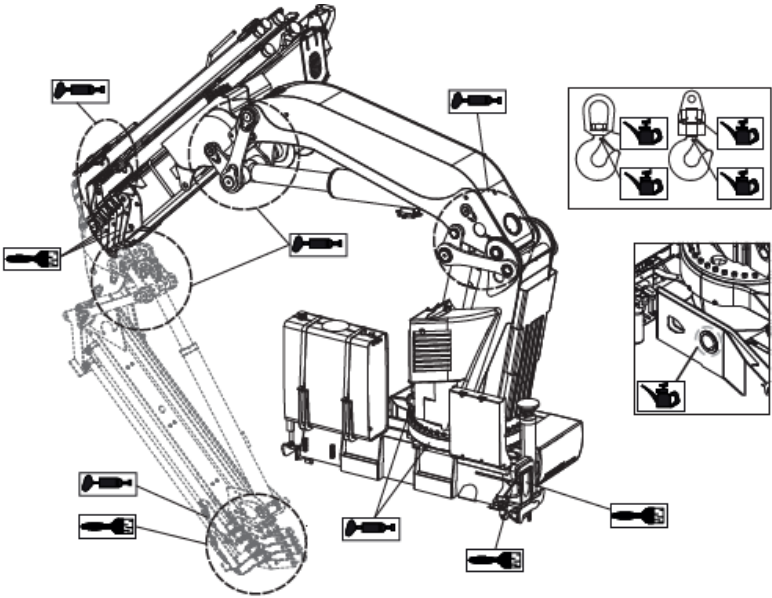
A: 12-16 Dorset Street, Lonsdale, SA, 5160

W: www.maxilift.com.au



Effer Progress

Lubricant Type	Grade
Hydraulic Oil	ISO 46 - See below for temperature specific grade
Slew Gear Oil	SAE 90 for ambient temp above 20 degree Celsius
Molybdenum Grease	Only for use on bronze made components
Lithium Based Grease	AGIP MUEP2 or equivalent for booms, Jib and Stabiliser Extensions
General Greasing	Milex 2 (NILS) or grease type NILS ATOMIC RH
Winch	ISO 46



	ISO VG 32	ISO VG 46	ISO VG 68
Examples	Tellus S2 V32 Super 32 Hydrol L-HV 32	Shell TELLUS T 46 Texaco RANDO HDZ46 Agip ARNICA 46	Mobil SHC 526
Where to use them			

Head Office:

ABN: 68 140 091 158  
P: 08 8326 6300 | F: 08 8326 4685  
E: admin@maxilift.com.au  
A: 12-16 Dorset Street, Lonsdale, SA, 5160  
W: www.maxilift.com.au



Tommy Gate

Lubricant Type	Grade
Hydraulic Oil	ISO 32